

Water-Energy-Food-Ecosystems For NDC's Planning



Tumaini John

Doctoral Fellow: IHE-Delft, UKZN and UNU-INWEH

Water Energy Food Nexus

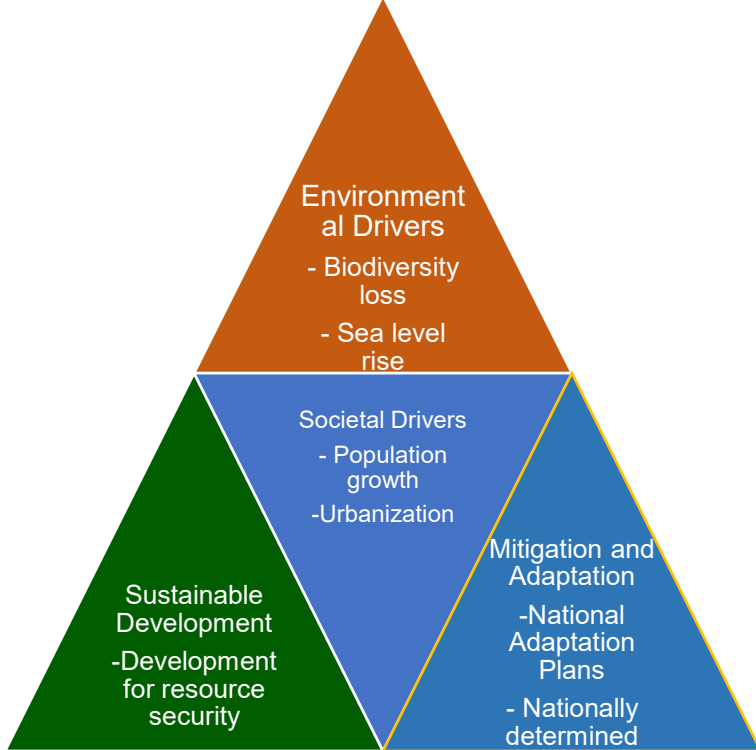
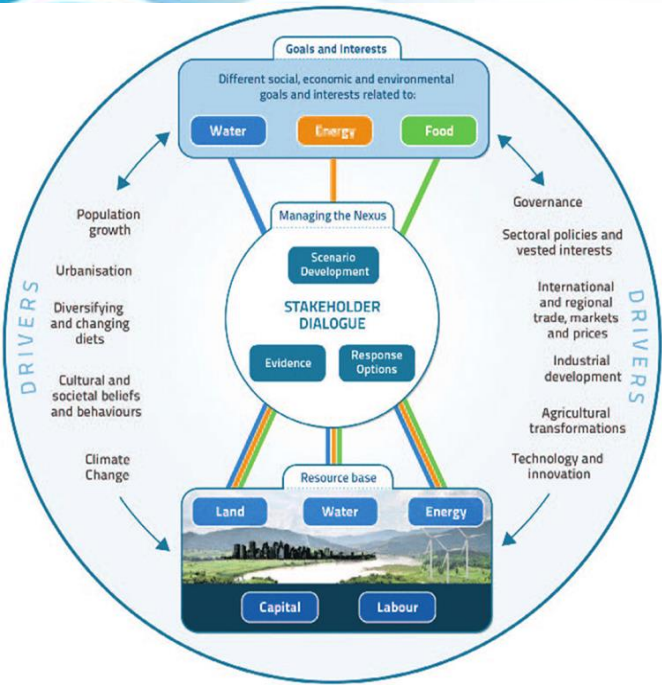
Water-Agriculture-energy sectors are at the crux of cross-sectoral, multi-governmental, and intricate connections between nature and humanity

Nexus planning explores these simultaneous interlinkages holistically

Nexus Types

1. Water-energy-food
2. Water-health-environment-nutrition

Cooperation & collaboration for Climate action

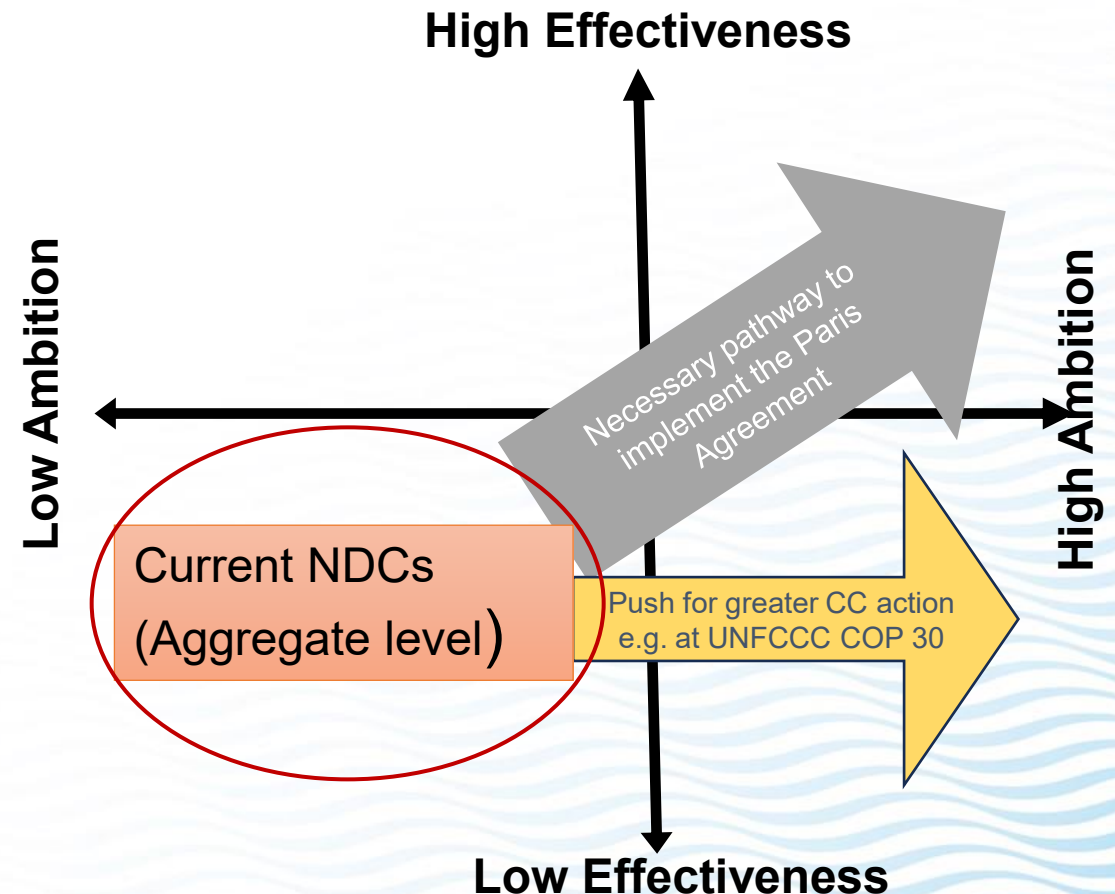


Nationally Determined Contributions

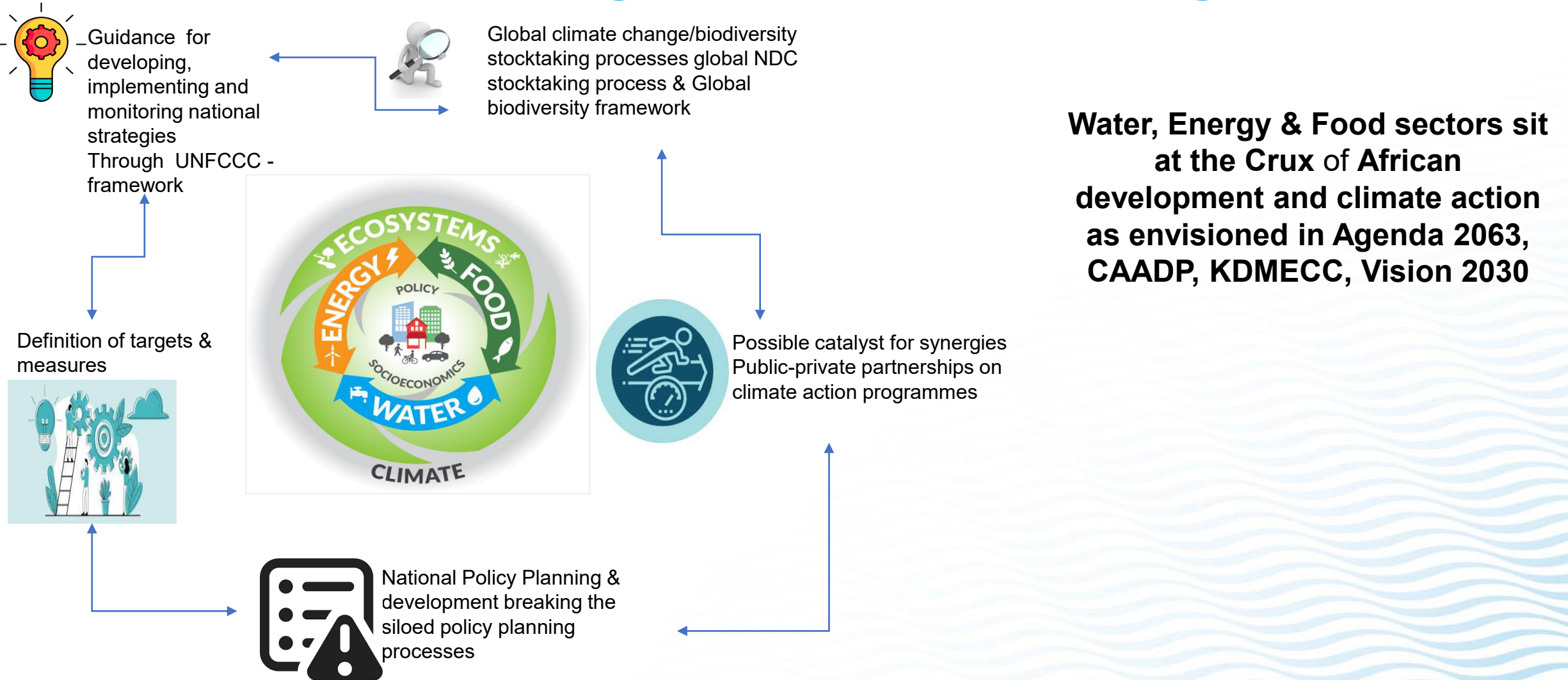
NDC's are 'expressions of intentions' with the 'Low ambition & Effectiveness' to make them **legally binding & enforceable**

- ❑ NDCs outline and communicate post-2020 climate actions.- **Country frameworks**
 - establish both targets and action plans to cut emissions and adapt to climate impacts at a **global** level.
 - baselines, timeframes for implementation, planning processes, and other methodological approaches.

- ❑ National Adaptation Plans (NAPs): **Domestic** frameworks and planning documents for:
 - medium- and long-term adaptation needs and strategies to address these vulnerabilities.
 - evaluating and addressing the country's adaptation needs.



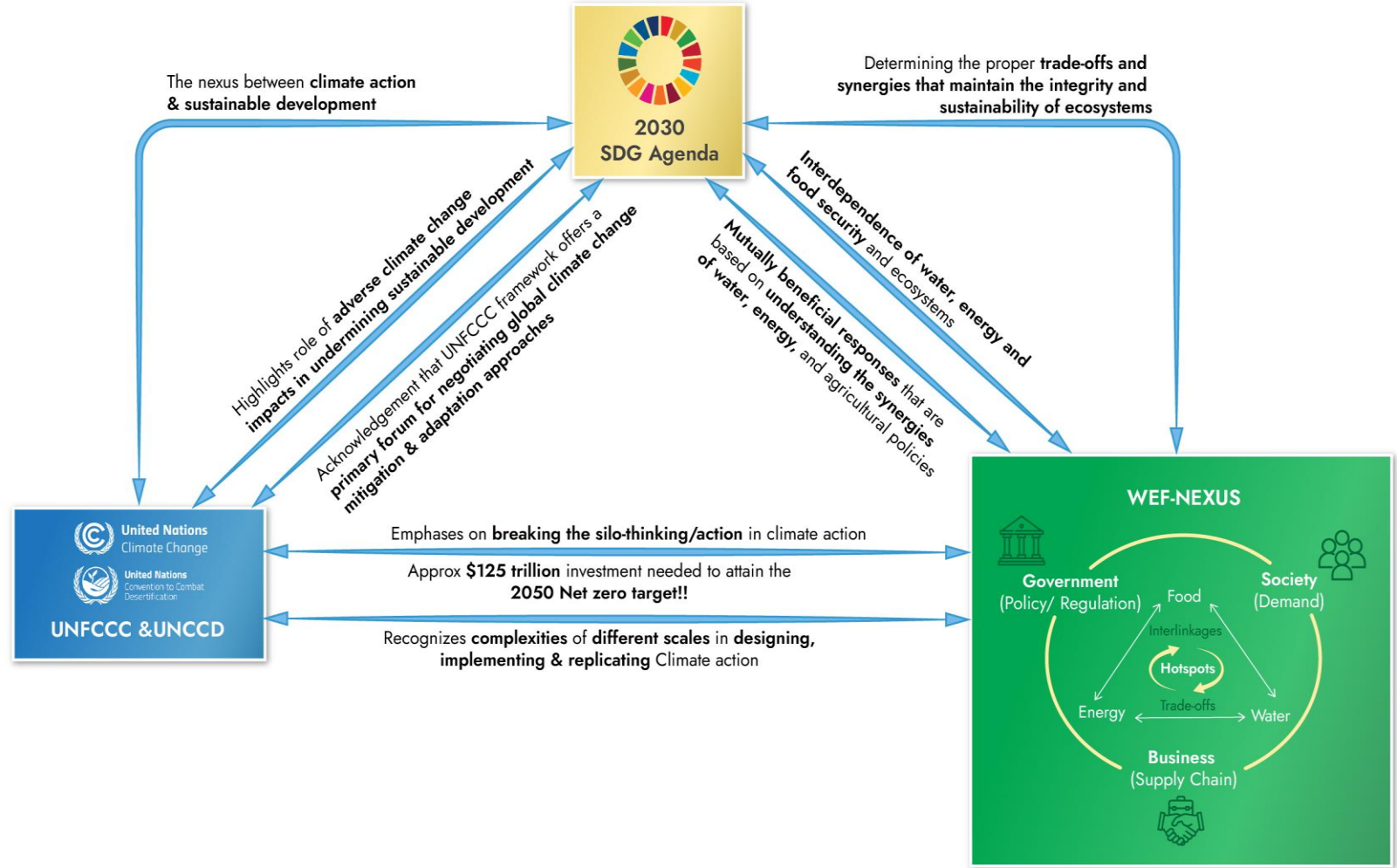
WEFE-NDCs Integration: Nexus Doing



SDG, UNFCC, UNCCD NEXUS

Identification, Prioritization, Preparation & Implementation of mitigation and adaptation measures at different scales are largely in **Water, Energy and Food sectors**

The nexus between **spatio-temporal resource management, cross-cutting governance approaches, and sustainable development**



KEY TAKE AWAYS

- 1. Incorporating Nexus Thinking in National Policies:** Amend existing or develop new national policies to explicitly include nexus considerations. E.g, water management policies should incorporate aspects of energy efficiency and biodiversity conservation, while energy policies should consider impacts on water resources and ecosystems.
- 2. NDC's goals & objectives** are strongly anchored in the **Water, Energy & Agriculture** sectors which form the basis of **national** and **regional** development and Climate action programmes
- 3. Setting Quantifiable Targets and Indicators:** Defining clear, measurable targets that reflect the integration of NDCs and NBSAPs within the WEF+ framework, for tracking progress and adapting policies. This approach will help quantify the benefits of integration and ensure accountability.



www.un-ihe.org

Tumaini John
t.john@un-ihe.org