



2023 International Mayor Forum Dakar, Senegal

IMPORTANCE OF INTERNATIONAL COOPERATION IN SUSTAINABLE DEVELOPMENT OF DHANKUTA MUNICIPALITY

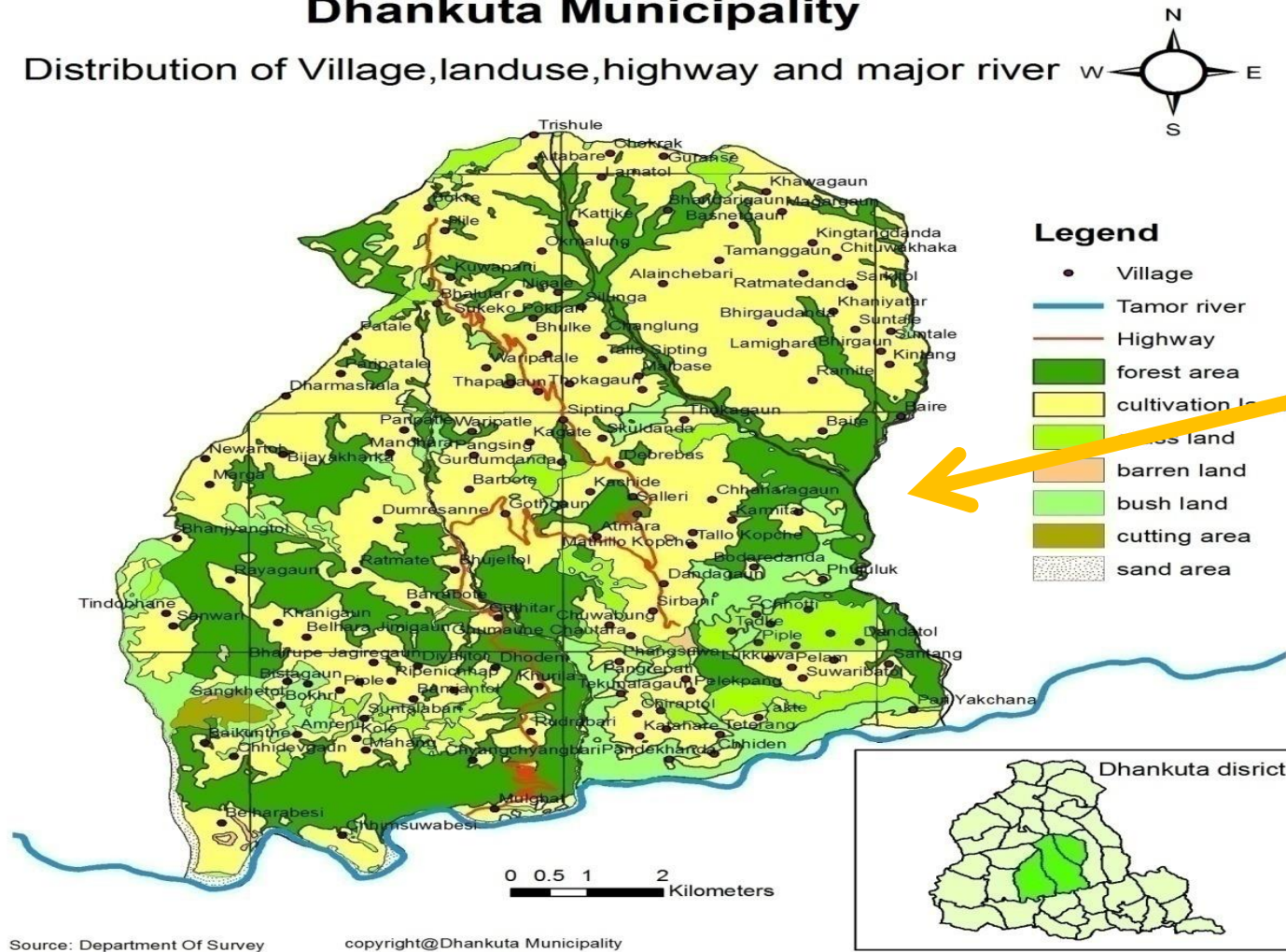
Chintan Tamang, Mayor

27th April 2023

DHANKUTA

Dhankuta Municipality

Distribution of Village, land use, highway and major river



Source: Department Of Survey

copyright@Dhankuta Municipality

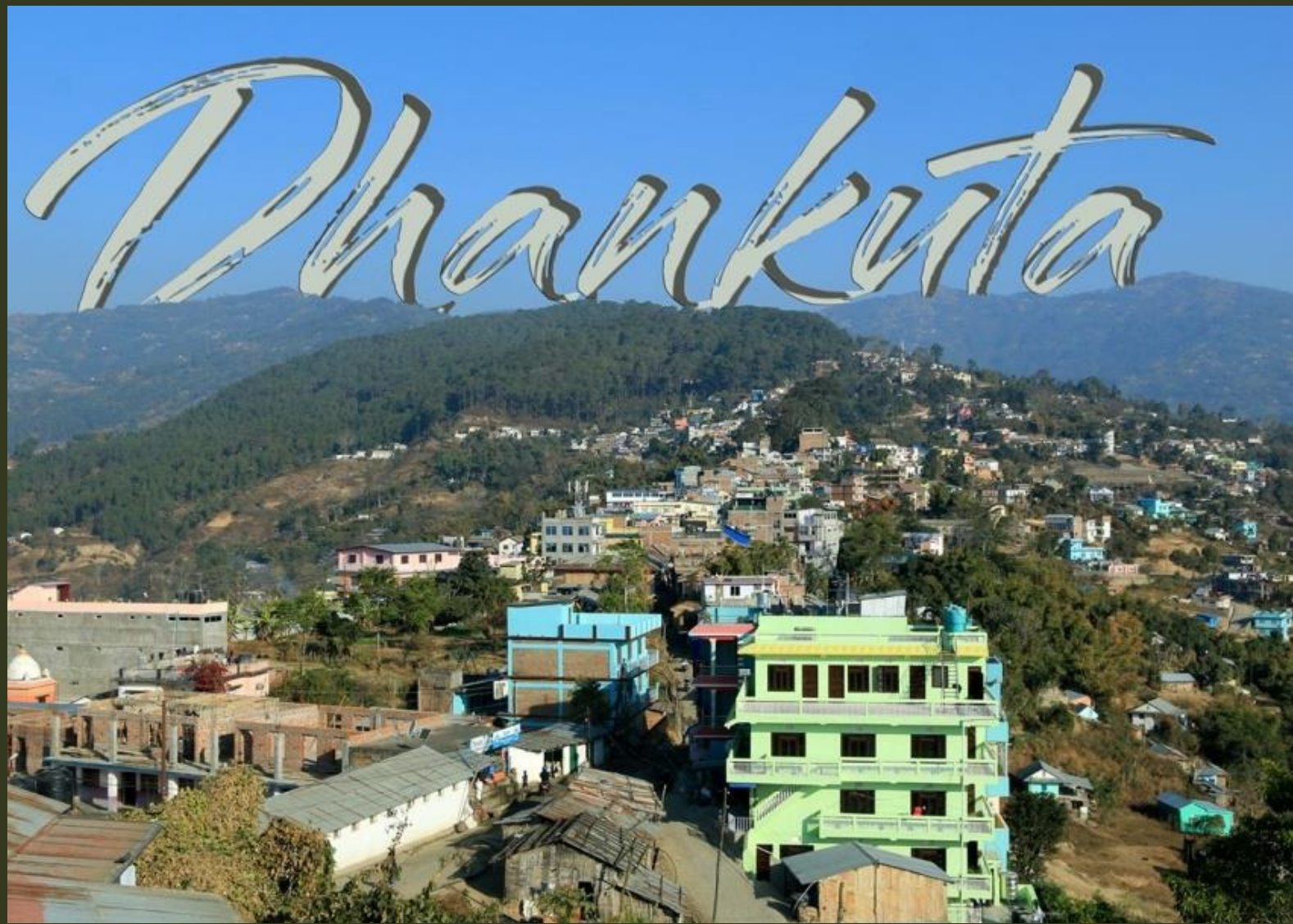
Kalapani territory
(under Indian administration)

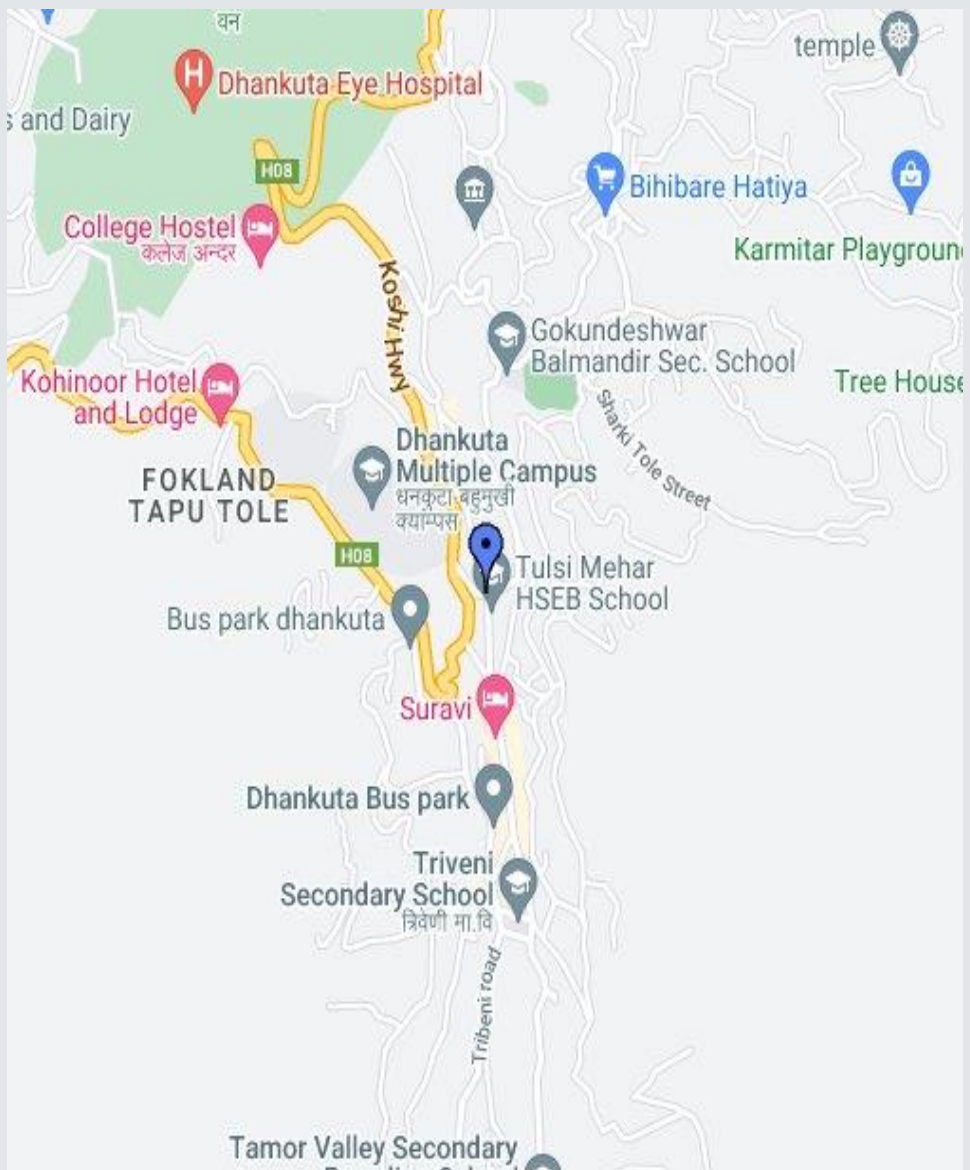
© Nations Online Project



Overview of Dhankuta Municipality

- ✓ **ESTABLISHED:** 1979 AD
- ✓ **AREA :** 110 Sq. Km. of slop Terrance hills(altitude from 300 mt. to 2500 mt.)
- ✓ **POPULATION:** 51,000
- ✓ **A place for the multi linguist and ethnicities (Aathapahariya Rai are the only indigenous people of Nepal)**
- ✓ **ACCESS :** Direct road of 431 kilometers from the Kathmandu to Dhankuta
- ✓ **NUMBER OF WARDS :** 10 (service division)
- ✓ **LITERACY RATE:** 96%
- ✓ **ECONOMY:** Agriculture-based, with some eco-tourism and cottage industries(SME)





Features:

- ❖ Geographically hill area with flora and fauna.
- ❖ Avocado, Orange and citrus are the seasonal fruits and green vegetable is everywhere.
- ❖ Multi culture and traditional attars of the caste based societies.
- ❖ Road network connected with all 10 wards.
- ❖ Being headquarter of the district there are administrative and market related infrastructure are enough for the service delivery.

Constrains:

- ❖ High internal migration
- ❖ Local business is complementing in service delivery
- ❖ Local production and productivity are decreasing due to climate change effect
- ❖ Drying traditional water sources and desertification is increasing.
- ❖ Attraction of foreign employment and higher education in other counties also forcing people to migrate.



Developmental Initiatives in Partnership with International Cooperation



- Climate Smart Village Program in partnership with UNDP.
- Reintegration Assistance to Returnee Migrants project with support from IOM.
- Nibuwa-Tankhuwa watershed management plan with the assistance of Australian Aid (AusAid) & ICIMOD.
- Small Irrigation Projects and Enterprise Development Promotion Program in collaboration with Swiss Development Corporation (SDC).
- Rural enterprise and remittance project with the support of IFAD.

Localization of SDGs

The 'Climate Smart Village' as an integrated approach for production resiliency to climate change, focusing on regeneration of production factor for sustainable development.

Climate smart agricultural approaches based on local production, provide access to different technologies and practices affordable for farmers to adopt.

Technology transform and capacity development for the changing tools and seed has increased production and All the migrants and non-migrants benefited. Partnership initiatives has improved capacity and opportunity of the local to copeup with economic and livelihoods challenges.



Localization of SDGs

Due to depleting water table in highland project support has Developed watershed management plan and teaches for conservation and revival of perennial water sources

Efforts for Green grow has turned barren lands and also soil conservation, minimizing landslides and controlling runoff.

Promotion of electric cookstoves for minimizing deforestation and providing clean and sustainable energy source.

Minimizing water drudgery for both male and female



Aid Efficiency Approach



PROVIDE FINANCIAL
AND TECHNICAL
SUPPORT AND COST
SHARING



ENHANCE CAPACITY
AND KNOWLEDGE
FOR EFFECTIVE
IMPLEMENTATION



FOSTERS
COLLABORATION AND
COORDINATION
AMONG
STAKEHOLDERS



SUPPORTS IN
ACHIEVEMENT OF
SDG TARGET SET BY
THE GOVERNMENT



CHALLENGE

Challenges

- Ø Limited funding and inadequate human resources
- Ø Limiting performance due to lapses of inter governmental coordination and support
- Ø Environmental and socio-political factors
- Ø Limited access to technology and information



Conclusion

- Ø Efforts for the reintegration Assistance to Returnee Migrants, Climate Smart Village project attract the local growers and farmers, and Nibuwa-Tankhuwa Watershed Management Plan are examples of successful collaborations.
- Ø Donor partners cooperation playing crucial role for sustainable development of the local communities.
- Ø Low range of matching fund is prevotal for more Collaboration that assured the achievement of sustainable development goals by 2030. So, more financial and technical collaboration is needed for the harmonization and collective actions.

THANK YOU

