

# *WELCOME TO THE* **GREEN CITY, YERBA BUENA.**

INTERNATIONAL  
MAYORS FORUM





*7 key stages that build the  
**Yerba Buena** model of today.*





## **FIRTS STAGE**

# *INFRASTRUCTURE WORKS TO PREVENT FLOODING*

The first problem we encountered was flooding.  
With international funds, a project was executed that  
benefited more than 100,000 residents.







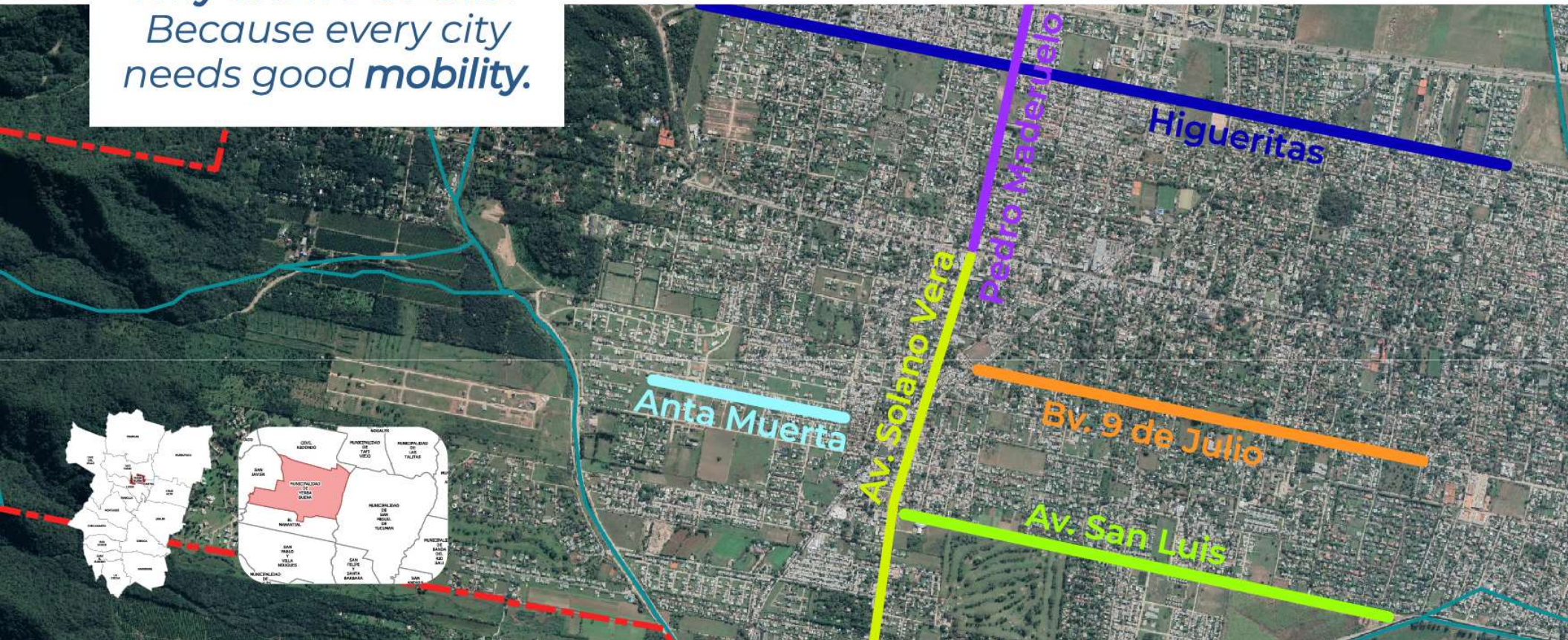


## SECOND STAGE

# GENERATION OF NEW PATHS

Avenida San Luis, Boulevard 9 de Julio, Calle Pedro Maderuelo, Calle Anta Muerta

*Why did we do this?*  
*Because every city*  
*needs good **mobility**.*





## THIRD STAGE

# *PUBLIC SPACES*

We intervened to respond to the regional challenge of generating the social fabric of the city. We have set up playgrounds for children, sports and recreational areas









# FOURTH STAGE

## *SECURITY*

We created the Municipal Urban Guard





## FIFTH STAGE

# *SUSTAINABLE MOBILITY*

Another challenge: sustainable mobility.  
New mobility trends have the objective of connect  
the urban area and reduce pollutant emissions.

We implemented 2 important lines of management:



Cycleway



Munibus





## SIXTH STAGE

# *HARNESSING TECHNOLOGY*

We use cameras, smart software and technology to be more efficient in management decisions.









## SEVENTH STAGE

# YERBA BUENA WORKS UNDER THE APPROACH OF THE INTEGRALITY OF LOCAL POLICIES





## SEVENTH STAGE

# YERBA BUENA WORKS UNDER THE APPROACH OF THE INTEGRALITY OF LOCAL POLICIES

*Yerba Buena is a green and sustainable city. Actions to achieve SDG 11*

Tree plan



Green parks



Birds









An aerial photograph of a park with a circular path and many trees. The path is light-colored and winds through the green space. There are several large trees with dense foliage. In the background, there are some buildings and a parking lot. The overall scene is a lush, green urban park.

*A city that works to adapt  
its transversal policies  
contemplating the SDGs.*