



What is the WMPSS?

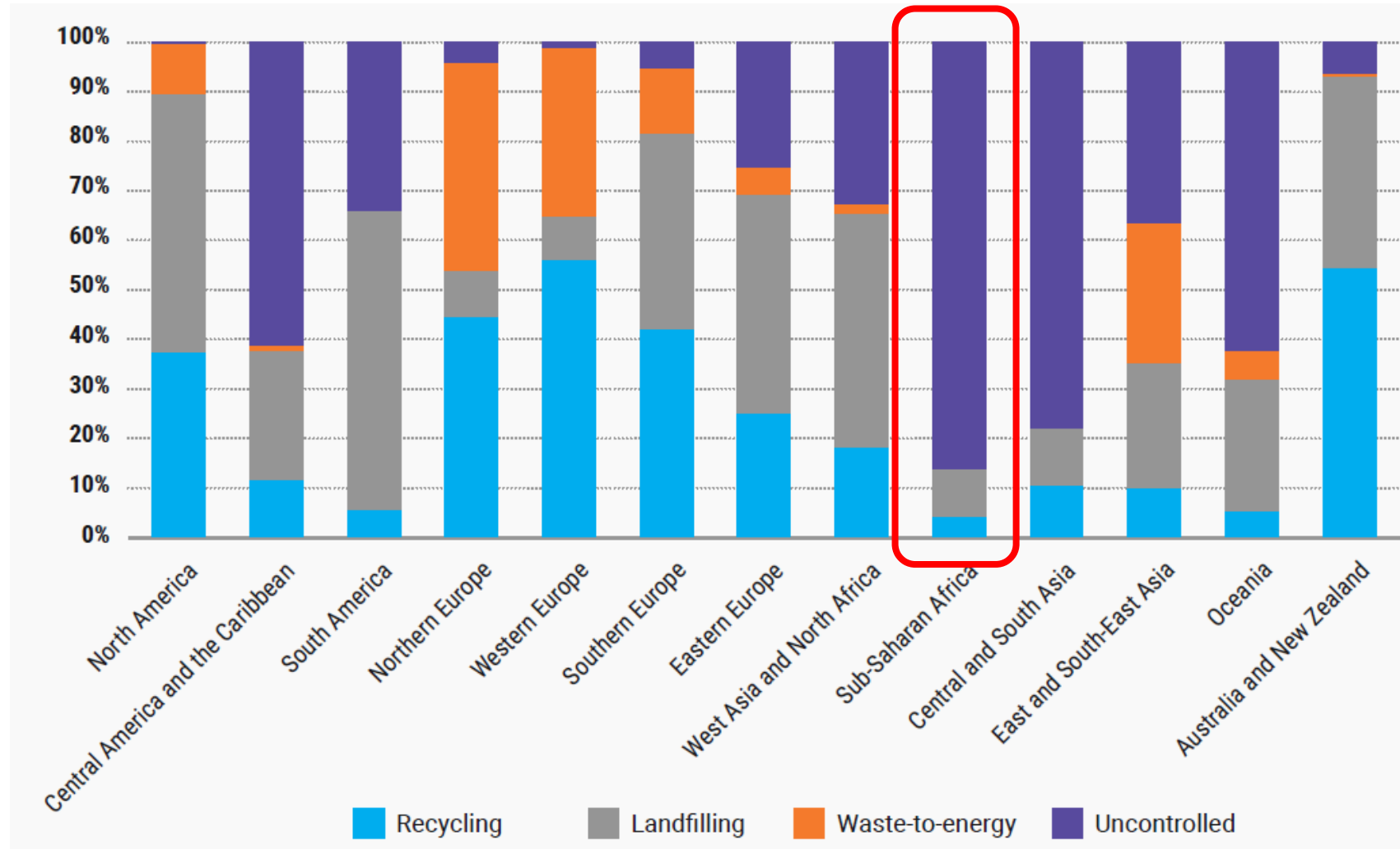
How it Strengthens Data Systems and Policy



Quick recap on the issue

Uncontrolled waste disposal

Regional distribution of municipal solid waste destination



Uncontrolled waste disposal

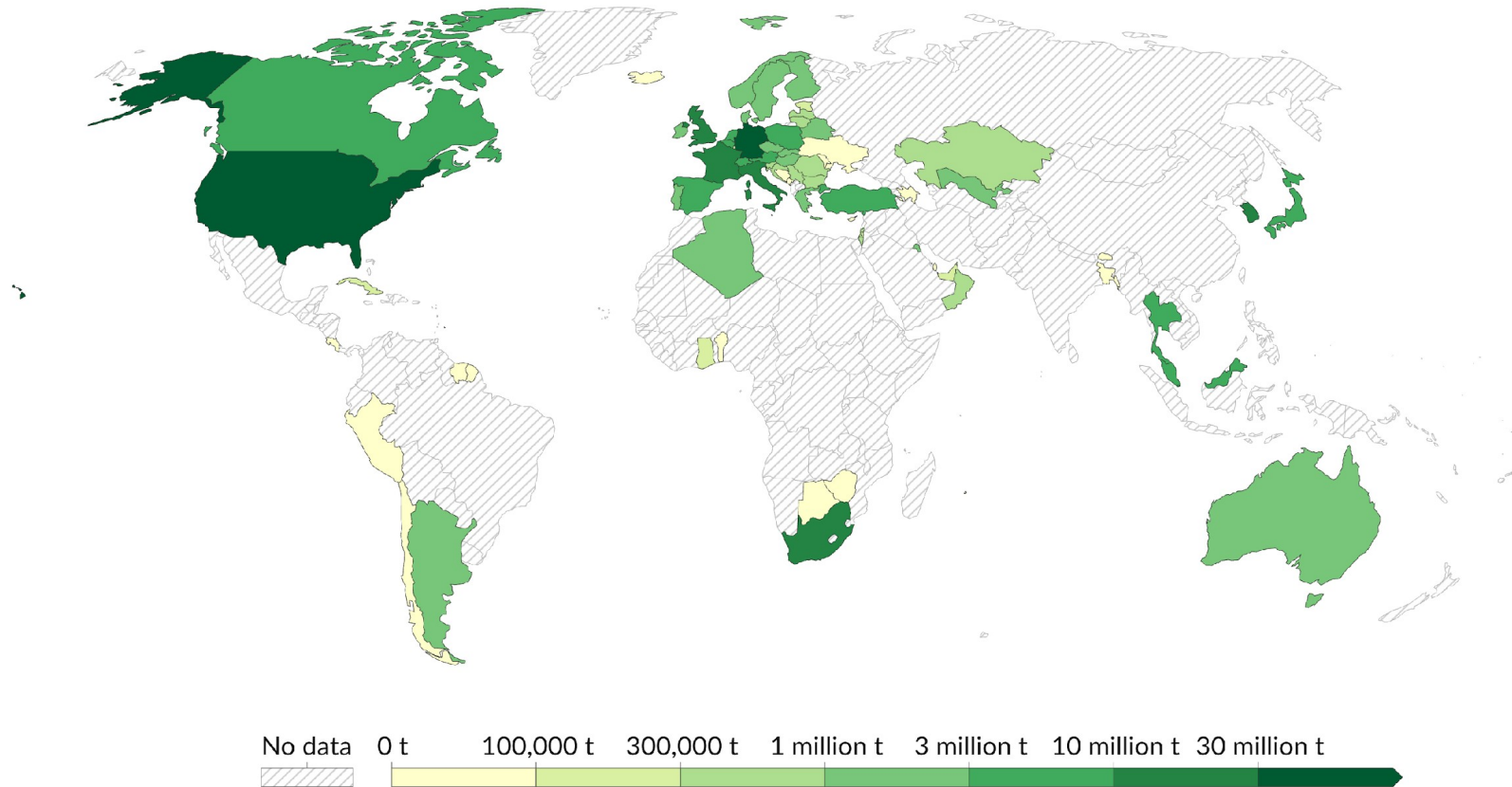
Regional distribution of municipal solid waste collection coverage and management in controlled facilities



Lack of data

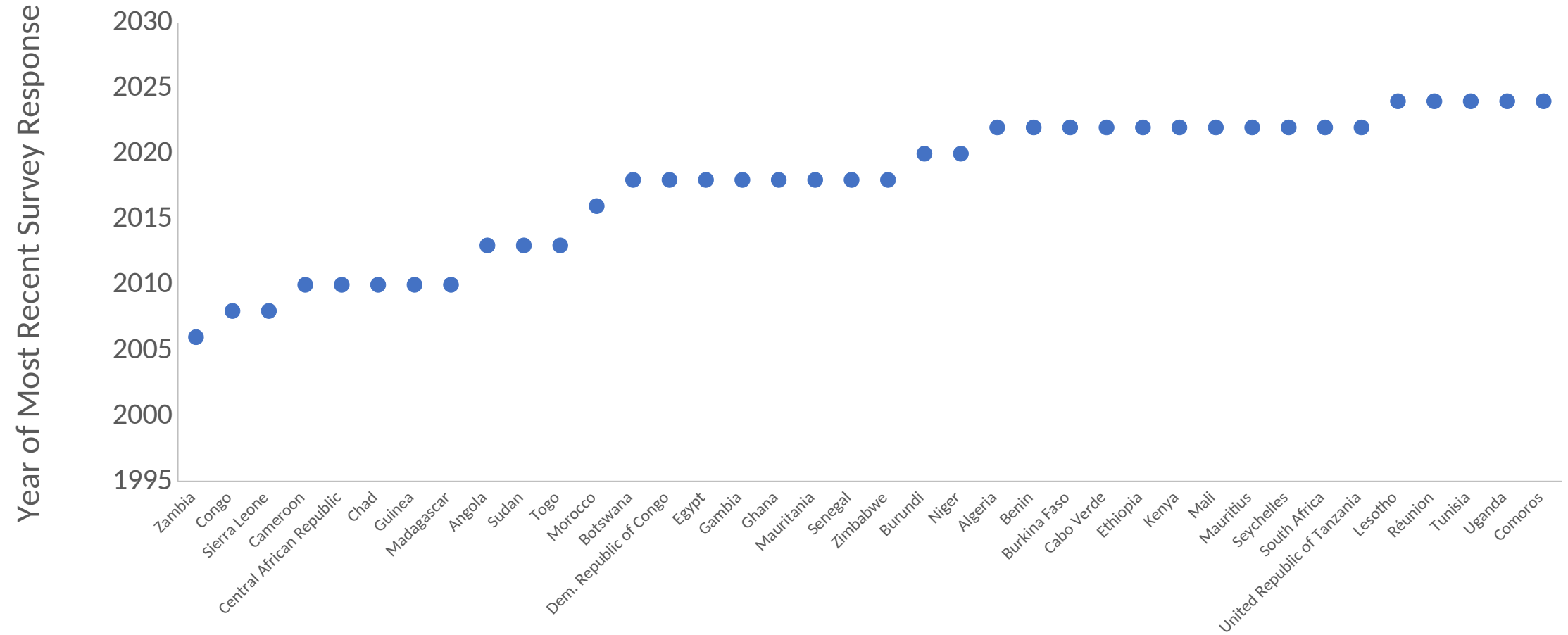
Municipal waste recycled, 2022

Municipal waste is waste from households and businesses, that would be collected by local authorities.



Lack of data

African Country Responses to UNSD/UNEP Waste Survey (2004 – 2024)



Lack of data



- Only 19% of countries in the region have provided recent data
- 38% of countries have not updated their data in over a decade
- 25% of countries in the region have not reported data

Reliable Data: The Foundation for Sound Waste Policy and Finance

Why is accurate waste data important?

- Data helps set baselines and track progress
- Supports financing (e.g. climate finance), budget resource allocation
- Crucial for business case and investment
- Enables **evidence-based** decisions and policy development & evaluation

1. We cannot regulate what we cannot measure

2. Data should first and foremost be of use to countries

WMPSS: A Waste Data Management Solution Designed for You

From evidence based insights to actionable curated knowledge for effective policy formulation and implementation



Provides governments with a benchmark for self-assessing waste management policies, practices and figures in their countries and transform the insights generated into actionable knowledge

WMPSS: What it Does

One-stop-shop for waste management data collection



Collects extensive data across the entire waste management lifecycle, serving as a one-stop-shop for information and centralizing data management.

Identifys strengths and improvement areas

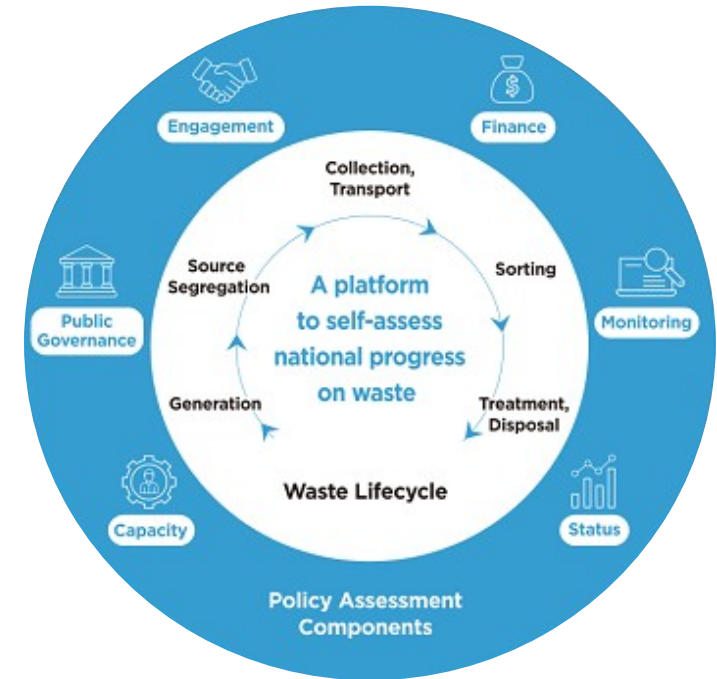


Aids in pinpointing strengths and areas needing improvement across six core components: Capacity, Public Governance, Engagement, Finance, Monitoring, and Status.

Practical Knowledge Recommendations



Connects data insights to practical measures, and delivers tailored AI-powered knowledge recommendations that address specific policy gaps.



WMPSS: What it Does

Annual Monitoring for Policy Effectiveness



Enables annual monitoring of progress and provides a robust mechanism for reviewing policy effectiveness and ensuring strategies remain effective over time.

Secure Data Management Solutions



Ensures secure and confidential waste management data monitoring and tracking, and enables countries to manage their data autonomously for their objectives.



Useful information

WMPSS Website



www.wastepolicysupport.org

WMPSS Tutorials



English language



French language