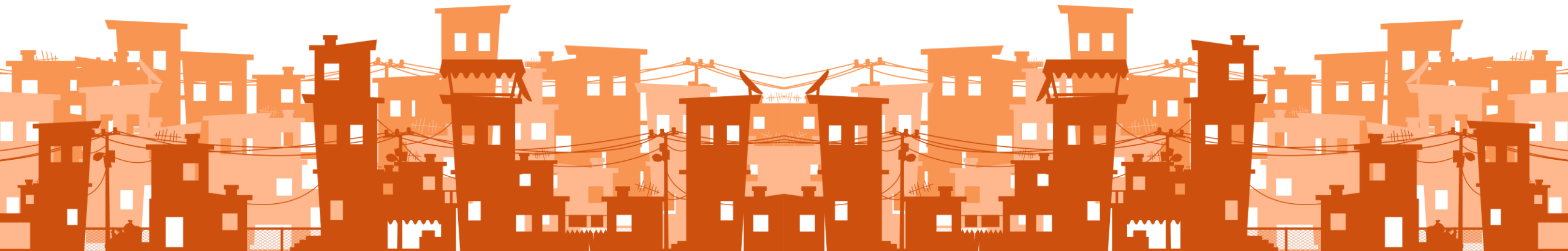




# GLOBAL ACTION PLAN



# Presentation structure

Urgency and strategic moment

Vision and dimensions of Slum Transformation

Principles and accelerators

Global key actions

Partnerships and Implementation Framework

Translating the GAP to national implementation frameworks

Collective brainstorming

# Scaling in the Decade of Action

- **Accelerate the implementation of the SDGs and the New Urban Agenda** “leaving no one behind” targeting “the most vulnerable first”
- **Transform** exclusion, inequalities and poverty to reach our desired destination with equality for all.
- **Enable diversity** to prosper and empower governments and all society at large to transform.
- **“Make the Decades of Action go live”** for an inclusive development of cities...



# Accelerating and scaling



**New Urban Agenda** with 53  
entry points



Sustainable Development  
Goals, **particularly Target 11.1**

# Slums, Informal Settlements and Inadequate Housing (as per Target SDG 11.1)

The 3 criteria of informal settlements are essentially captured in the definition of slums, which sustains the combination of both (slums/informal settlements).

	Slums	Informal settlements	Inadequate housing
Access to water	✓	✓	✓
Access to sanitation	✓	✓	✓
Sufficient living area, overcrowding	✓		✓
Structural quality, durability and location	✓	✓	✓
Security of tenure	✓	✓	✓
Affordability			✓
Accessibility			✓
Cultural adequacy			✓

Affordability is most relevant and easier to measure

Housing affordability = Suitable means of measuring inadequate housing in a more encompassing manner

# Global challenge and regional zoom-in



- In 2020, almost **1.1 billion people** (24.2% of urban population) living in slums or informal settlements, **continuous growth of absolute numbers** since 2000

A large orange circle is positioned on the left side of the slide, partially cut off by the edge.

50 percent  
of the future  
growth of  
slums

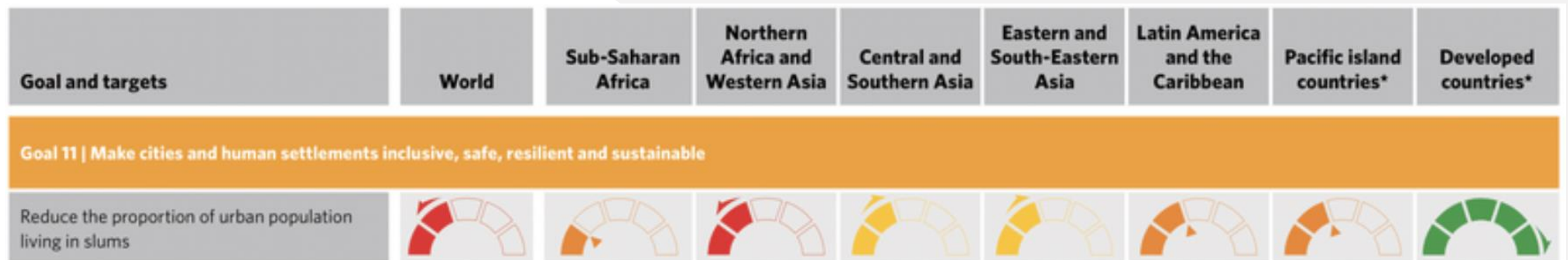
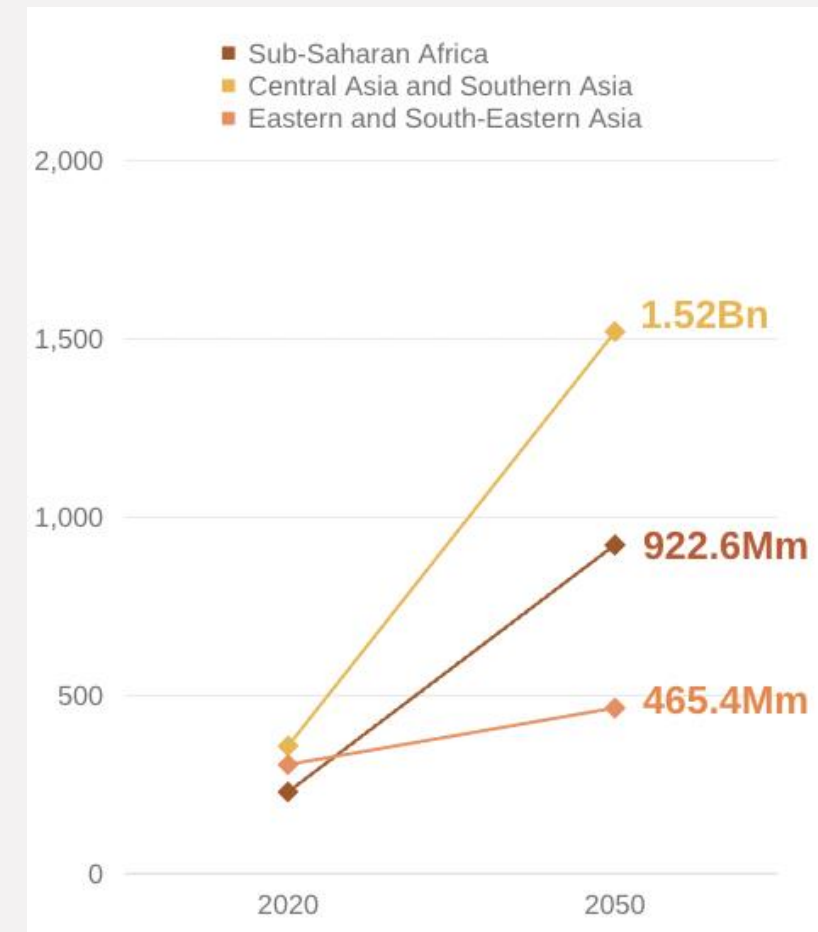
is manifested in 8 countries:

**Democratic Republic of Congo, the United Republic of Tanzania, the Philippines, Ethiopia, India, Nigeria, Egypt** and Pakistan.



# Urgent action needed now

- **Growth prediction until 2050: Another two billion people** will live in slums = 183.000 people each day
- **SDG 11.1** is one of only 9 targets regressing



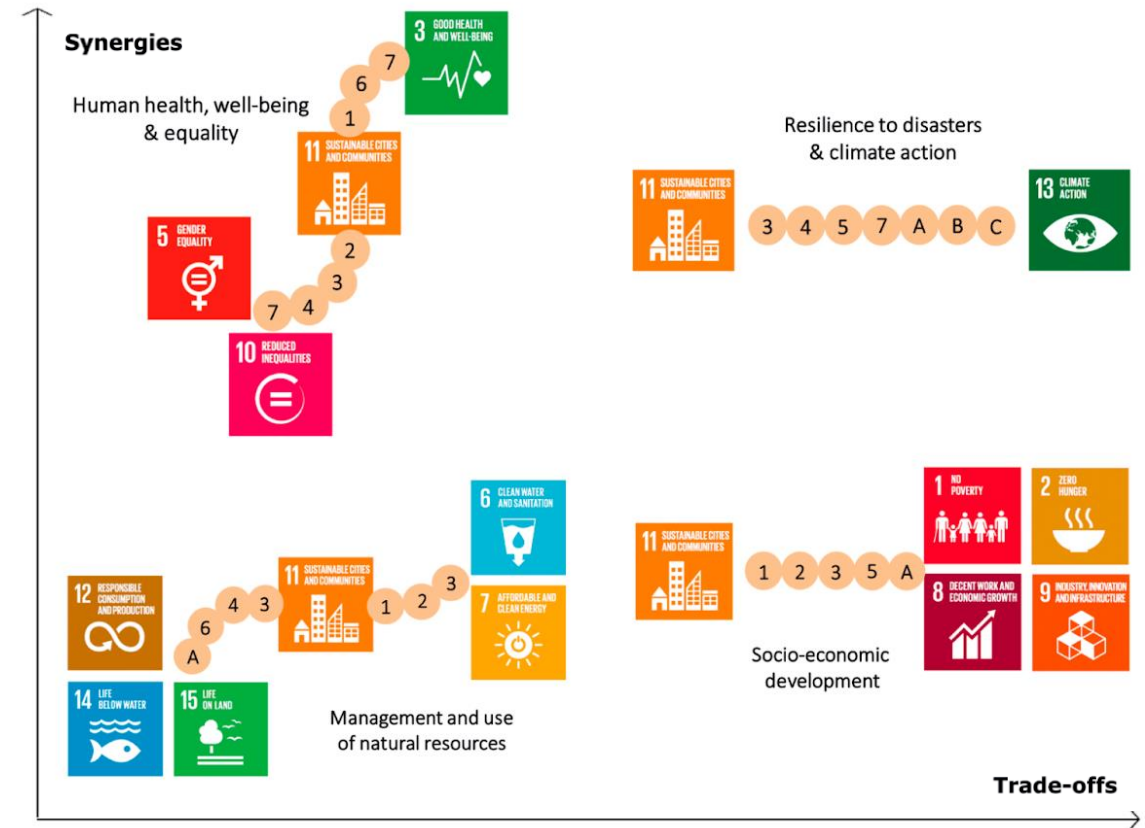
Source: UN Stats, 2022



# Transformative actions and SDG achievement

## Slum transformation has a positive effect on almost all SDGs

1 (1.4, 1.5),	7 (7.1),	13 (13.1),
2 (2.1),	8 (8.5),	14 (14.2),
3 (3.3, 3.9),	10 (10.2),	15 (15.5),
4 (4.a),	11 (11.1,	16 (16.7),
5 (5.5),	11.2, 11.4,	17 (17.3, 17.9,
6 (6.2),	11.5, 11.7),	17.16, 17.17.,
	12 (12.2),	17.18)



Devisscher, T. et al (2019). SDG 11: Sustainable Cities and Communities – Impacts on Forests and Forest-Based Livelihoods.

# URGENCY and STRATEGIC MOMENTUM

---

- Rapid urbanization
- Global climate crisis
- Global health crisis
- Increased conflicts

**Common Global Agenda – responding to basic needs**



# TRANSFORMATIVE SHIFT – MAINSTREAM

---

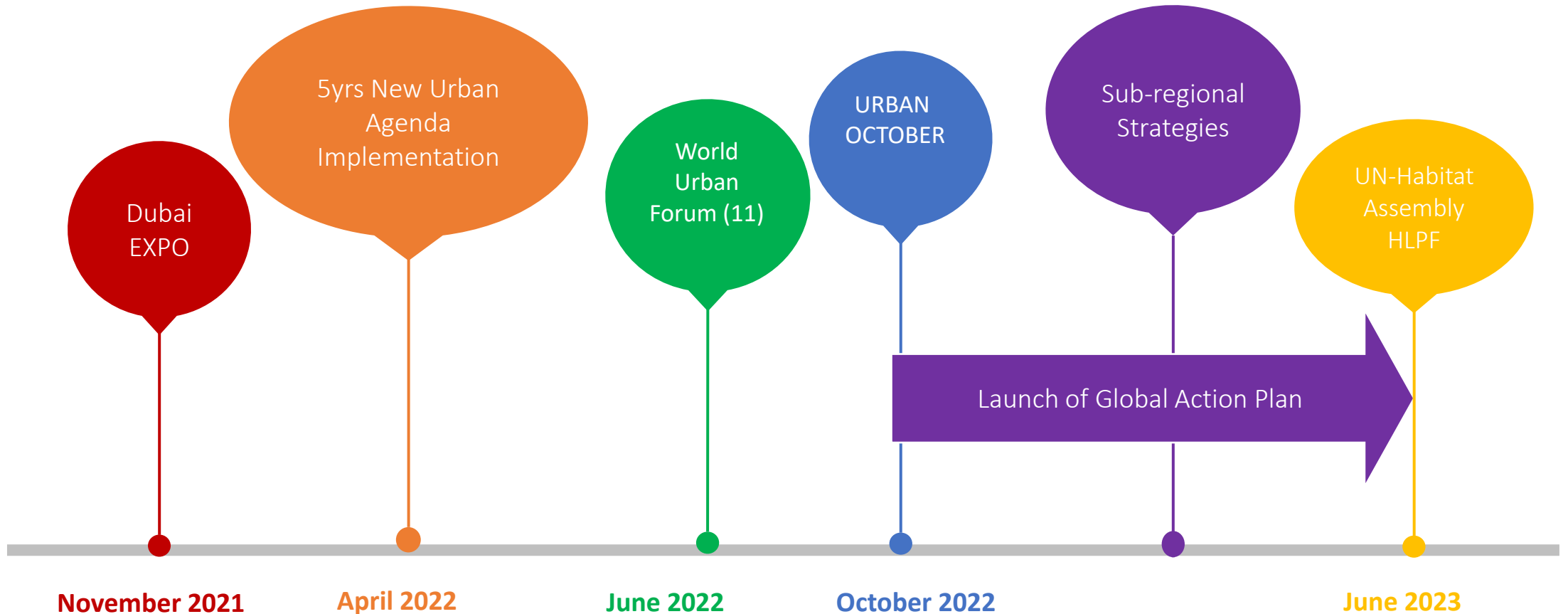


Put informal settlements and slums at the centre of the agenda



Sustainable cities and communities can only be achieved if slums and informal settlements are at the core.

# Milestones for a global partnership vision



# The Participatory Slum Upgrading Programme (PSUP)

INITIATED BY THE ACP SECRETARIAT,  
FINANCED BY THE EUROPEAN COMMISSION AND  
IMPLEMENTED BY UN-HABITAT

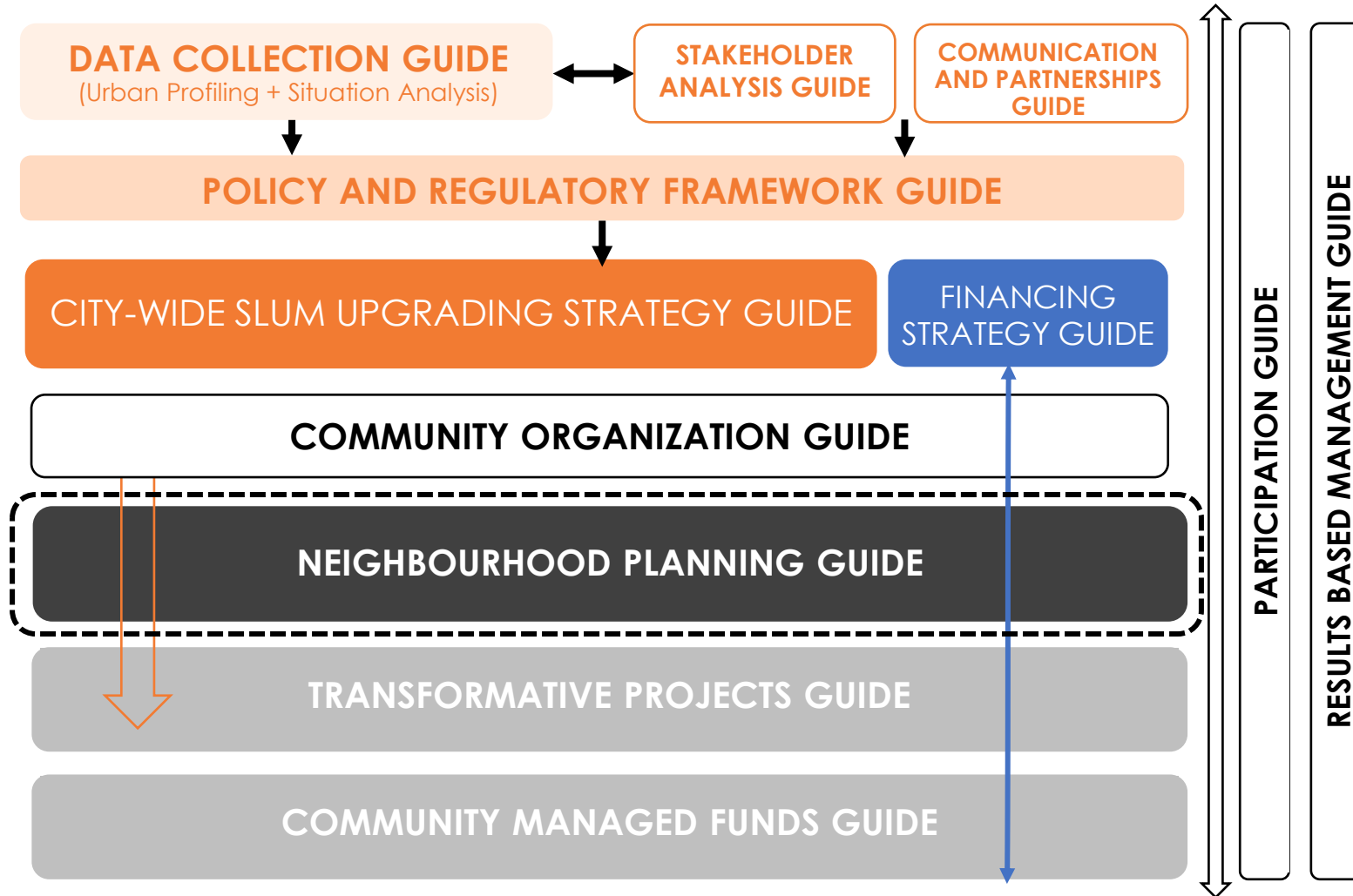


A PHASED APPROACH:

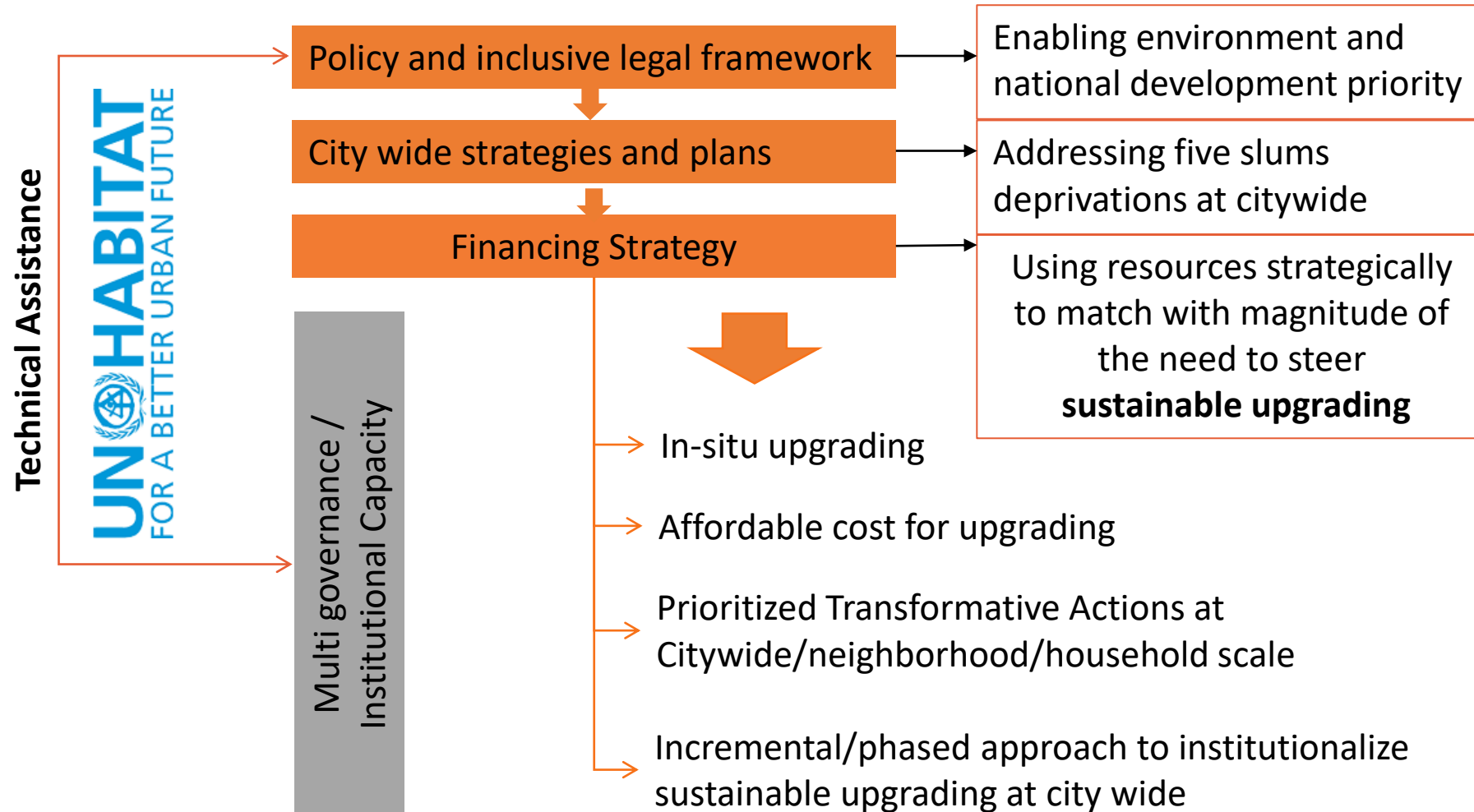


**Since 2008 – in more than 50 countries and  
200 cities with more than 4 million people**

# Holistic integrated approach - tool package



# Financing Strategy for Upscaling








# Support to scaling of Programmes in Slum Upgrading

- **National policy/strategies/legal framework** c  
omplemented by national financial strategies and resource allocation
- **Capacity and Knowledge** : Training of national institutions as knowledge centres, capacity to implement upscaling, facilitate participation, support community led implementation
- **Multi-governance framework** : Institutional arrangement, public-private – people partnership, political commitment, coordination, clear ToRs for entities of all sides and contracting papers;
- **Business models** : Partnership on transformative projects with particular focus on community-led initiatives
- **Preventive measures** : Pro-active planning to cater for urbanization
- **Strategic use of public resources** to remove key bottlenecks; tenure security at scale




A large orange circle on the left side of the slide, containing the text 'CORE DRIVING PREVENTION AND UPGRADING' in white capital letters.

# CORE DRIVING PREVENTION AND UPGRADING


## **At the core stands a citywide strategic planning approach**

Integrated spatial people-centred citywide  
slum prevention and upgrading strategies

- Setting clear targets of achievements
  - Planning with the growth and introduce solutions of accommodating the growth
- 
- A yellow dashed line in the bottom right corner, consisting of several short, curved segments.



# Proactive approach

- Establishing **growth zones** and **injecting functions**
  - Assess **re-use** of available housing stock or available **land** in adequate locations
  - **Introduce initial functions** for the spaces and facilitate access to jobs
- 

# NEIGHBOURHOOD TRANSFORMATION

- **Security of tenure** – flexible solutions to tenure security
- **Multiple-use climate smart community resource centre**
- **Multi-governance frameworks** connecting communities to action design and implementation of inclusive policies
- **Innovative neighbourhood design shaping a neighbourhood identity** (with multiple partners including private sector (start-ups, social enterprises and impact investors) injecting innovations in partnership with communities led by local authorities and NGOs)
- Implementation of **climate smart social and physical infrastructure, basic services, housing solution catalogue**
- **Creating connectivity to the formal city** (contextualized functions and solutions on mobility, public space)

# CABO VERDE



# Process

PSUP Phase 1 & 2  
2013-2017

NATIONAL

NATIONAL  
URBAN  
POLICY

MUNICIPAL

MUNICIPAL  
HOUSING  
PLANS

LOCAL

PARTICIPATORY  
NEIGHBOURHOOD  
PLANS

LOCAL

COMMUNITY  
MANAGED FUNDS

LOCAL

PHYSICAL  
PROJECTS

PSUP Phase 3  
2018-2022

## DESCRIPTION:

National Policy for Territorial Planning and Urbanism (PNOTU);  
National Housing Plan (PLANAH);

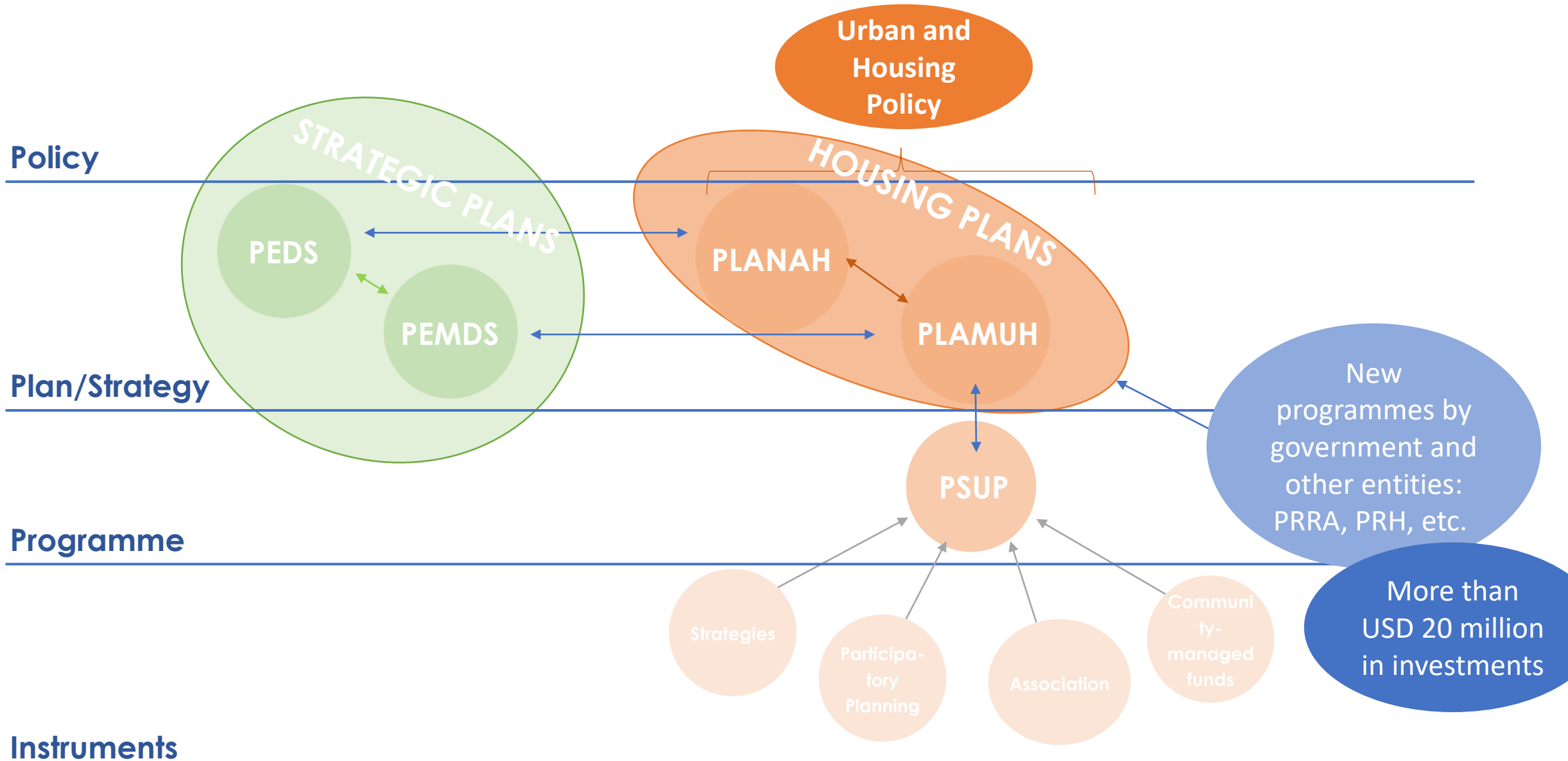
Capacity on participatory slum upgrading and local economic development for resilience with big prevalence of informal settlements and development and review of City-Wide Slum Upgrading Strategies (CWSUS)

Participatory neighbourhood planning developed with the engagement of the community and approved

Development and launching of the Community Managed Funds (CMF) and establishment of a mechanism of sustainability to benefit the community after the implementation of the pilot projects

Transformative project implementation for slum upgrading in a participatory way

# Framework

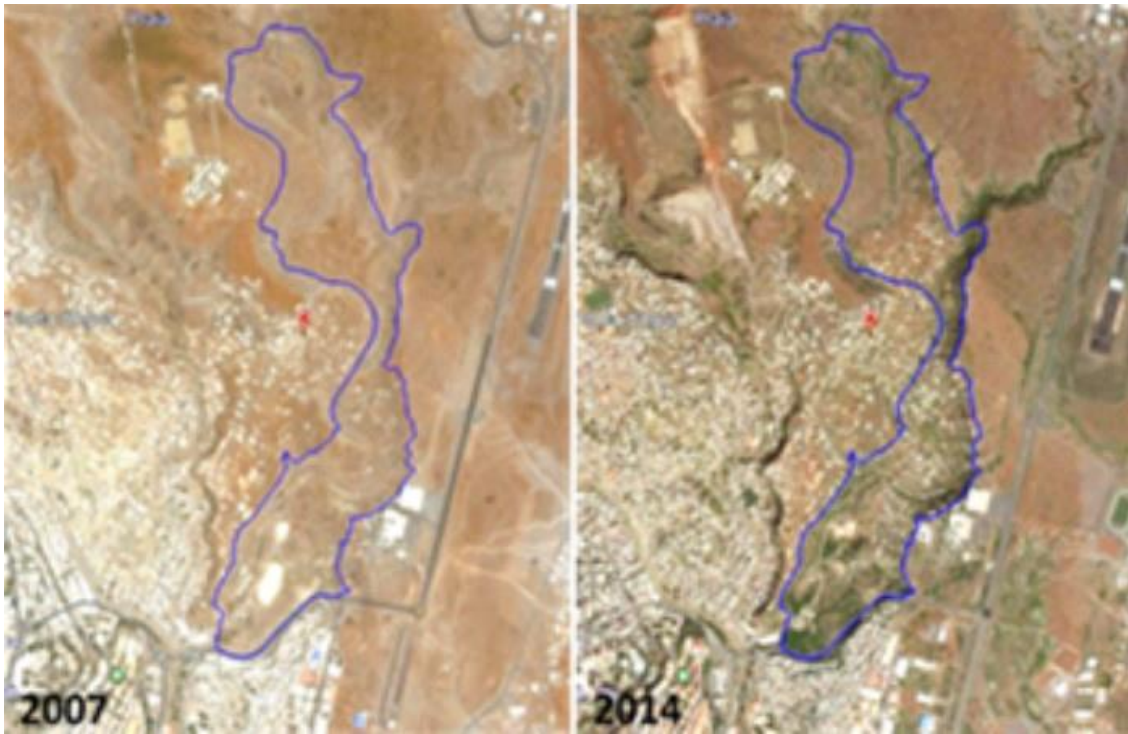


Development of Participatory  
Neighbourhood Plans

Setting up Community Managed Funds  
(CMF)

Priority Physical Projects

# Priority Actions



*Água Funda 2007 & 2014*

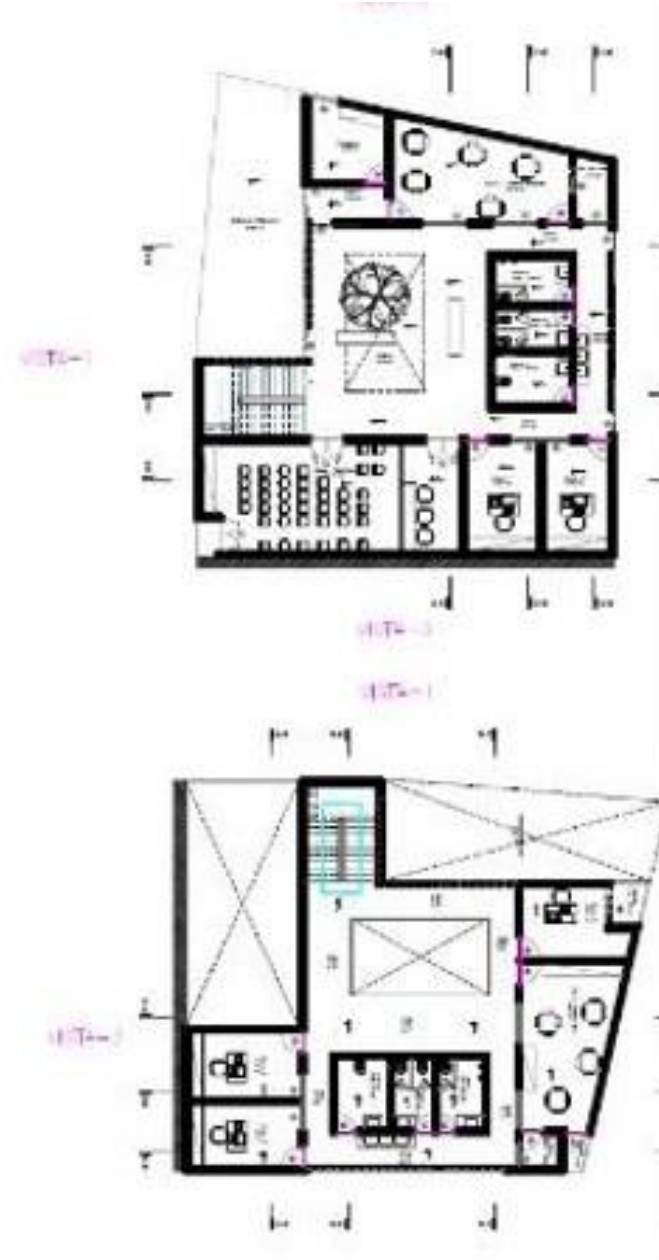
## Steps of the Participatory Neighborhood Plan

- Identification of stakeholders for participation and organization of the plan
- Development of base maps and data collection
- Identification and definition of the neighborhood development vision, from a local perspective
- Elaboration of possible scenarios for local development jointly with the community and technical experts
- Land use planning
- Community validation of the plan
- Approval of the plan by the relevant authorities
- Implementation of the plan





*Priority validation and discussion of project details in Água Funda*



Renders & final plan drawings of the Community Center



*Construction of  
Community  
Center*





*Inauguration of  
Community  
Center building  
September 2022*

# Community Managed Funds (CMF)

## Project Eligibility Conditions



participatory and  
inclusive



have its beginning  
after application



social and financial  
viability



sustainability

## Priority Areas



inclusion / income  
generation



impact project



quality and  
durability



potable water



improved sanitary  
facilities

## Eligibility of Beneficiaries



between 18 and 65  
years old



Cabo Verdean  
nationality or legal  
residence in CV



reside at the project  
site (2 years)



technical capacity



counterpart -  
minimum 10%



Having no active  
credit or debts





*Community Workshops*

# GLOBAL ACTION PLAN AND COMMUNIQUE

**CITIES FOR ALL LEAVING NO  
ONE AND NO PLACE BEHIND**



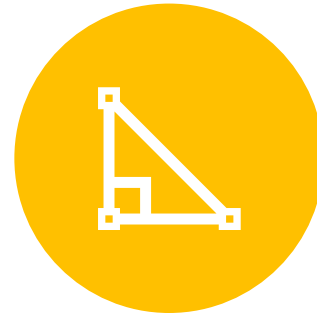
# The core ingredients of the GAP



VISION OF  
TRANSFORMATION



PRINCIPLES



DIMENSIONS



GLOBAL ACTIONS



# Vision statement

**Slum transformation** stands for the vision to end marginalization of people and places, enabling spatial integration and a better standard of living for all.

It **jointly shapes Cities for All** where human and spatial potentials can be realized.

# Principles of slum transformation

Inclusive and participatory, in the spirit of co-production

Evidence and data-driven, leveraging the localisation of actions

Integrated and proactive, providing a strategic framework for continuous transformation

Equitable and catalytic, meeting the needs of everyone & progressively delivering human rights

Sustainable and climate-smart, aiming for a healthy urban living environment

Affordable and replicable, prioritising most impactful interventions at scale

# Management of slum transformation

No quick fix / long-term streamlined with policies

No half-hearted / comprehensive approach as catalytic

No one left behind / informed driven by impacts

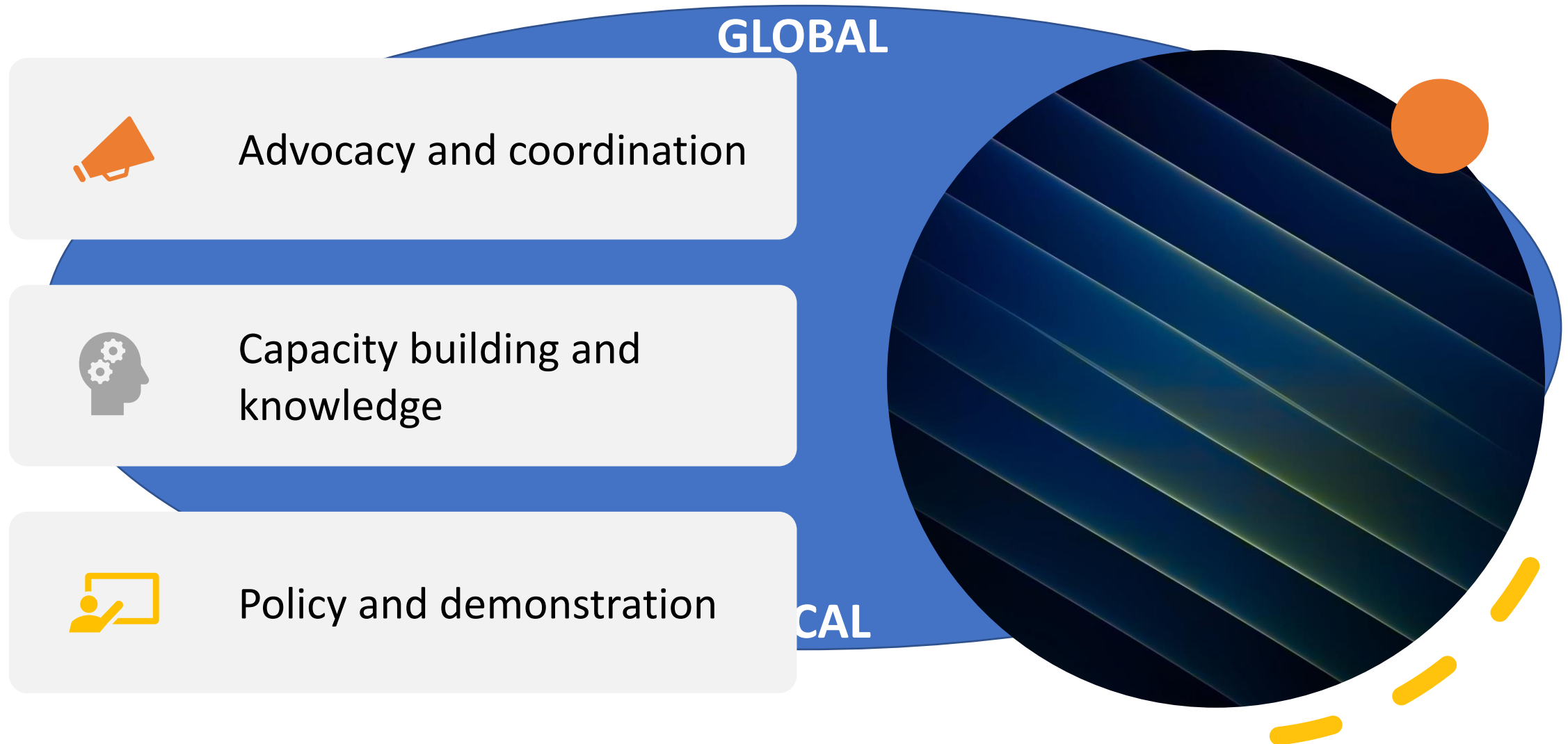
No one solution fits all / diverse and flexible solutions

No dimension left out / multidimensional and cross-sectoral

No place left out / everywhere with a citywide approach

No one excluded / everyone considered in all dimensions of the process

# Accelerators in multiple partnership platforms



# Dimensions of slum transformation

## Catalytic power of inclusive and integrated slum transformation





Key actions

# Reduction of spatial inequality and spatial justice

1. Integrated urban territorial management

2. Strategic planning for integrated urban development

3. Affordable, habitable and accessible housing with availability of services and infrastructures



# Key actions of slum transformation

## Reduction of spatial inequality and spatial justice

### 1. Integrated urban territorial management:

Promote instruments that recognise and document tenure along the continuum of land rights to **guarantee secure tenure** and the **social function of land**, ensuring **safeguards in cases of unavoidable relocation** that is to be negotiated, and establish effective land management systems that **avail affordable, well-located land** for housing purposes as proactive response to urban growth.





## Key actions of slum transformation

**Reduction of spatial inequality and spatial justice**

**2. Strategic planning for integrated urban development:** Enable strategic **planning and inclusive spatial planning** informing resource-efficient interventions with flexible standards and **incremental implementation strategies** for slum transformation at neighbourhood, citywide, national and regional level for environmentally sustainable and **balanced densification**, avoiding predatory urban expansion and enabling a **people-centred urban development**.



## Key actions of slum transformation

### Reduction of spatial inequality and spatial justice

**3. Affordable, habitable and accessible housing with availability of services and infrastructures:** Target incremental provision of **affordable, habitable, accessible and social housing** with use of local materials and available basic services, in thriving **locations** characterised by **availability of education** and **social facilities, job opportunities**, integrated and targeted **health care services**, and safe and accessible **public spaces** of high quality, connected through inclusive **mobility** options.



## Key actions of slum transformation

### Social inclusion and integrated governance

**4. Inclusive urban policies and flexible frameworks:** Develop participatory, **inclusive urban policies** and enabling, **flexible regulatory and institutional frameworks** at national, metropolitan and local level to outline a joint long-term vision with transformation targets for integrating informality and protecting marginalised groups, including mid-term benchmarks for follow-up monitoring of implementation.



## Key actions of slum transformation

### Social inclusion and integrated governance

**5. Multi-level governance and inclusive participation:** Institutionalise flexible, balanced **multi-stakeholder systems for decentralised, participatory governance** with vertical bottom-up and top-down coordination as well as horizontal cross-sectoral partnership settings with local governments at the lead that identify and constantly engage key stakeholders. **Build capacities to promote effective, equitable and empowered participation** of all groups in policy formulation, planning and decision making for culturally adequate and inclusive design of all interventions and accountability in the implementation.



## Key actions of slum transformation

### Social inclusion and integrated governance

**6. Monitoring for evidence-based interventions:** **Improve data collection** exercises, supporting innovations in identifying communities' potentials in data generation, and **monitor progress** towards implementation, with **disaggregated data** for all groups of residents in slums and informal settlements across all settlements, with focus on women, children and other marginalised groups, **to assess transformation costs, affordability, and multidimensional impacts** at neighbourhood, city, national and global levels including movements of households after interventions.



## Key actions of slum transformation

### Reduction of poverty and economic prosperity

**7. Socio-economic empowerment:** Design socio-economic transformative actions, **promoting** inclusive and decent **economic opportunities** and **increasing access to livelihood strategies**, with skills training on innovative technologies and business models for social and physical service provision, to build social and human capital with focus on women and youth. Support local **pro-poor livelihood options and job creation as catalyst** to integrating the informal sector in economic growth opportunities of the city as a whole.



## Key actions of slum transformation

### Reduction of poverty and economic prosperity

#### 8. Access to finance and equitable investments:

Enhance **access to** innovative, diverse and safe **finance solutions and productive resources** for housing, infrastructure and services, and business initiatives, responding to the needs of the lowest income groups. Proactively address risks of investments and develop **adequately resourced finance mechanisms**, leveraging multiple partnerships, for comprehensive and equitable investments in slums and informal settlements with accountability for progressively achieving transformation benchmarks.





## Key actions of slum transformation

### Environmental sustainability and protection

**9. Promotion of circular economies and sustainable construction patterns:** Integrate **green building materials and nature-based solutions** into transformation interventions for lowering impact on air, water and land, ecosystems and biodiversity. Plan interventions to **limit use of space and resources** and to address existing pollution through **adequate infrastructures** and promotion of employment **opportunities around waste, energy, and resource management.**



## Key actions of slum transformation

### Environmental sustainability and protection

**10. Resilience building and risk management:** Build responsiveness of all population groups to disasters, pandemics, or climate change for risk reduction and management of external shocks and stresses, designing **tailored adaptation and mitigation measures** based on new knowledge about **local experiences of resilience and community approaches**. Proactively address risks in informal settlements and slums at city and national levels and plan measures towards risk mitigation, by establishing **platforms for horizontal exchange and capacity-building** of stakeholders and implementing actions to **strengthen community-based organisation** and response mechanisms.



# Partnerships and Implementation Framework

# Next steps..

Political  
champions and  
advocacy

Target setting at  
global, regional  
and national levels

Policy  
harmonization

Global  
commitments for  
topping up will  
and finance

National roadmap  
and action plan  
framework

Joint programming  
setting the  
foundation for  
meeting the scale

# Global Implementation Framework

Target setting at  
global, regional and  
country level

Regional strategies  
and action plans

Learning and  
knowledge exchange

Knowledge hubs

Report on the status  
quo at country level  
(baseline)

Multiple partnership  
framework at country  
level

Joint programming  
with partners and  
scaling with resource  
mobilisation



# MAKE THE CASE THAT IT IS POSSIBLE....

**SET THE FOUNDATION UNTIL 2030** with a global mobilization

**SET A CATALYTIC BENCHMARK** for targeted scaling

**SET ACTIONS** that can be applied with communities, context-specific with an equitable approach

**ACT with WOMEN** at the core

**BUILD A COORDINATED INTEGRATED INCLUSIVE ROADMAP** to inclusive, resilient, safe and sustainable cities and communities



# Thank you!

**UN-Habitat**, Kerstin  
Sommer, Land, Housing,  
Shelter Section,  
Programme Manager,  
Participatory Slum  
Upgrading Programme  
PSUP, Strategic Plan  
Coordinator 1 – Reduced  
Poverty and Inequalities,  
(a.i.)

[kerstin.sommer@un.org](mailto:kerstin.sommer@un.org)