

TUCUMÁN, ARGENTINA



2022 INTERNATIONAL MAYORS FORUM

Dakar, Senegal
13 - 16 December 2022

Julio Saguir

Argentina

Tucumán



Provincial Data

- Surface: 22,524 km².
- Population: 1,703,186 inhabitants (2022 Census).

Background information

2005

TUCUMÁN ADOPTS THE MILLENNIUM DEVELOPMENT GOALS (MDG) 2005 - 2015

2008

STRATEGIC LINES FOR ECONOMIC AND SOCIAL DEVELOPMENT

2009

SOCIAL DIALOGUE

STRATEGIC LINES FOR THE DEVELOPMENT OF TUCUMÁN 2016 - 2020

2014

METHODOLOGICAL MANUALS FOR PLANNING, PROGRAM AND PROJECT
MANAGEMENT, AND EVALUATION

IDB TECHNICAL ASSISTANCE

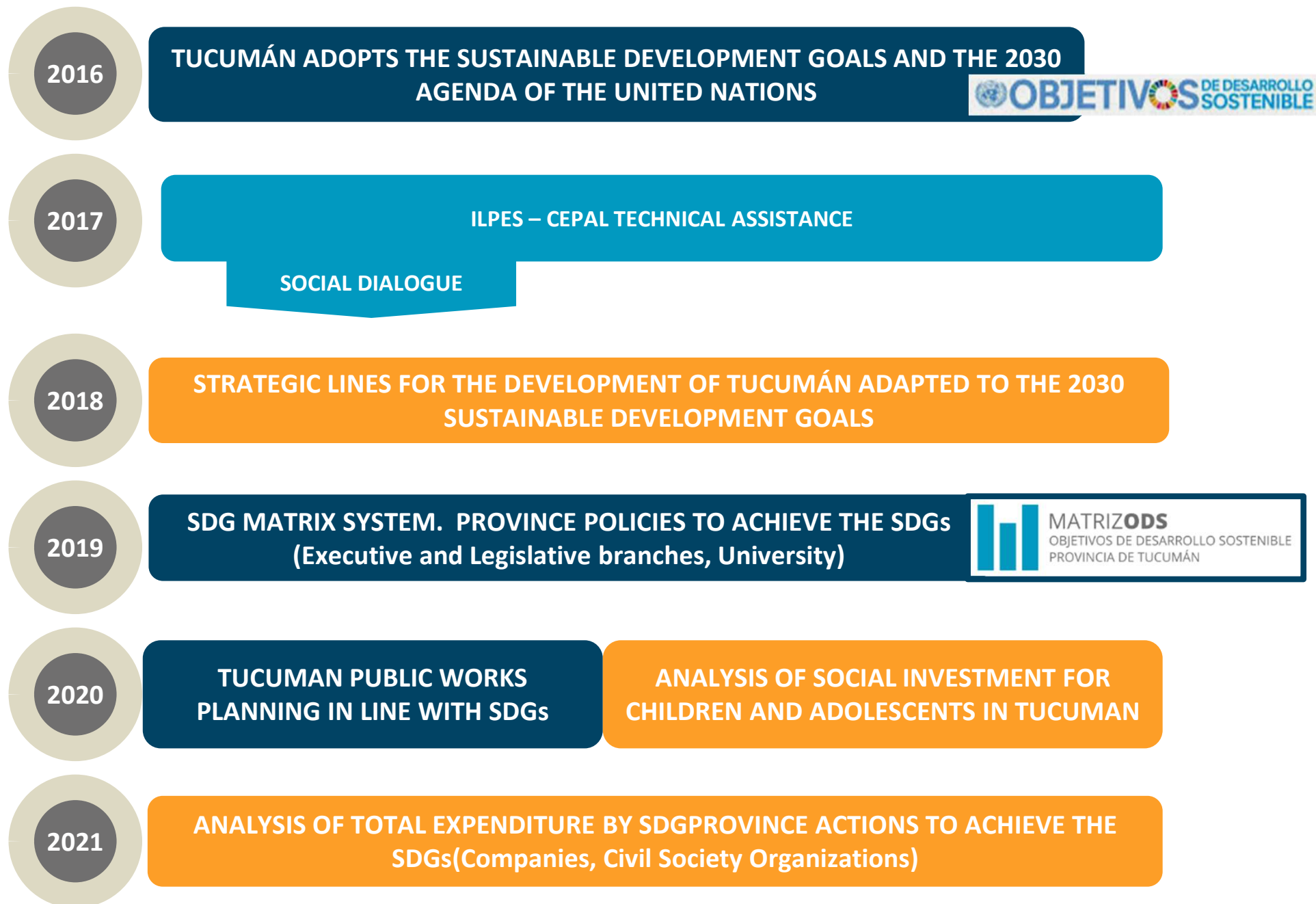
2015

PUBLIC MANAGEMENT PLANNING LAW No. 8839



SOCIAL DIALOGUE

Background information

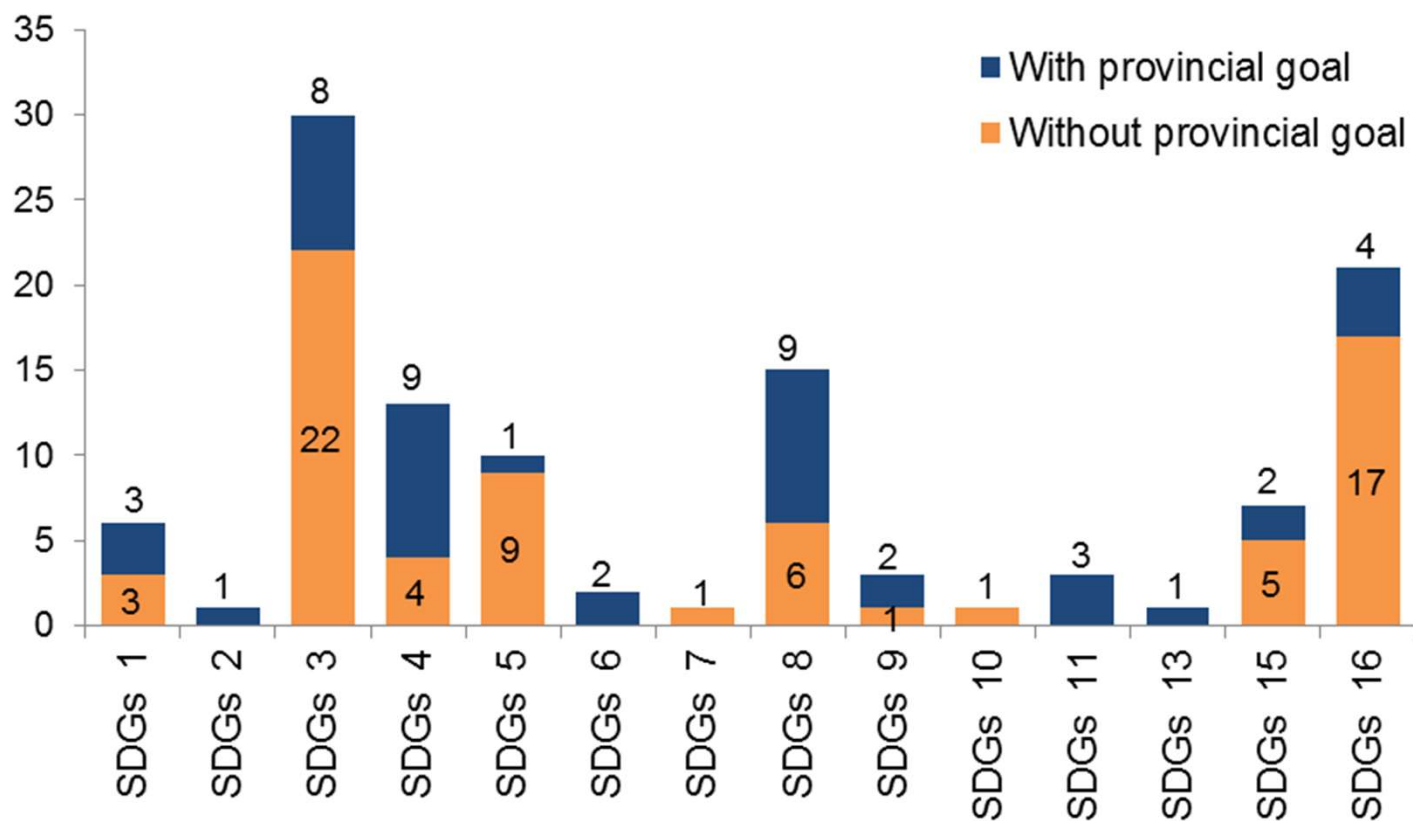


*All this work is
developed and
shown in our
website*

ods.tucuman.gov.ar

Provincial progress towards the SDG targets

ods.tucuman.gov.ar



Provincial programs linked to SDGs

<https://matrizods.tucuman.gob.ar/>

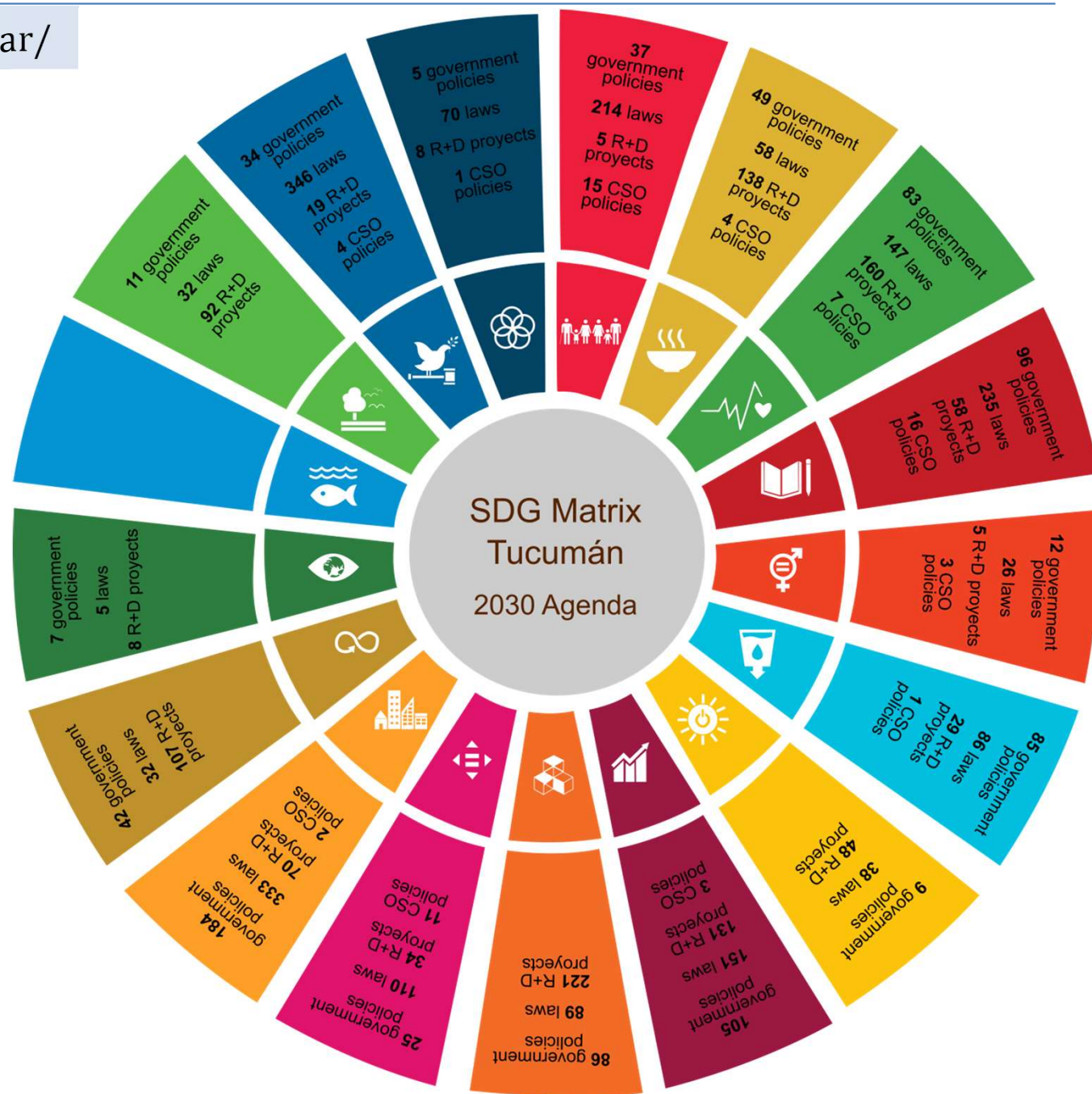
Programs or policies implemented in Tucuman by SDGs and Government area

SDGs	Ministry / Department											
	Ministry of Productive Development	Ministry of Social Development	Ministry of Economy	Ministry of Education	Ministry of Government and Justice	Ministry of Public Health	Ministry of Security	Sports Department	Public Management and Planning Department	General Secretary of the Government	Total	
1		16	3							3	22	3,1%
2	9	5		1		3					18	2,6%
3		6		4		58	5			2	75	10,7%
4	1	2	23	48	2	1		5		4	86	12,3%
5		7				1					8	1,1%
6	13		66						1		80	11,4%
7	3		6								9	1,3%
8	72	8	1						1	2	84	12,0%
9	21		51			1			2	1	76	10,9%
10	1	4		1			2	1		3	12	1,7%
11	3		137			19	5			7	171	24,5%
12	18								1	1	20	2,9%
13				2							2	0,3%
15	8										8	1,1%
16	1	2			6		14		1		24	3,4%
17		3							1		4	0,6%
Total	150	53	287	56	8	83	26	6	7	23	699	

Source: Self elaboration from data obtained from the SDG Matrix. *ods.argentina.aov.ar*

Provincial programs and policies linked to SDGs

<https://matrizods.tucuman.gob.ar/>



The strategic axes make up the areas of intervention necessary to achieve sustainable development. It presents how the 2030 Agenda and LEDs address current development challenges. To achieve these commitments, sustained and inclusive growth (Economic Axis), social inclusion (Social Axis) and environmental protection (Environmental Axis) are required.



SOCIAL



ENVIRONMENTAL



ECONOMIC



VISION OF THE SOCIAL AXIS

The Province deepened its social policies in a continuous, equitable manner, strengthening social inclusion and support networks that prioritize health, education and social security from a transversal perspective, which operate within a full institutional framework, ensuring access and equal opportunities for each inhabitant. We have a provincial state whose active role assumes the challenge of promoting full citizen participation, valuing their sense of belonging and the recognition of local cultural identity.

SUSTAINABLE DEVELOPMENT GOALS

SOCIAL AXIS

SDG 1. End of Poverty >

SDG 2. Zero hunger >

SDG 3. Health and well-... >

SDG 4. Quality education >

SDG 5. Gender equality >

SDG 6. Clean water and... >

SDG 10. Reduction of... >

SDG 16. Peace, justice an... >

ENVIRONMENTAL AXIS

SDG 7. Affordable and... >

SDG 11. Sustainable cities... >

SDG 13. Climate action >

SDG 15. Life on land... >

ECONOMIC AXIS

SDG 8. Decent work and... >

SDG 9. Industry, innovatio... >



SOCIAL AXIS



SDG 1. END OF POVERTY



End poverty in all its forms everywhere

SDG targets

Within each option, select the goal to be displayed

By 2030, reduce by at least half the proportion of men, women and children of all ages living in poverty in all its dimensions according to national definitions (Target 1.2)



1

Goal SDG Tucumán: Reduce by 50% the percentage of people below the line of indigence in the province of Tucumán by 2030

2

Tucumán SDG Goal: Reduce by 50% the percentage of people below the poverty line in the province of Tucumán by 2030

3

Other Indicators

By 2030, ensure that all men and women, in particular the poor and vulnerable, have equal rights to economic resources, as well as access to basic services, ownership and control of land and other assets, inheritance, natural resources, appropriate new technologies and financial services, including microfinance (Target 1.4)





SOCIAL AXIS

SDG 1. End of Poverty

SDG 3. Health

SDG 4. Quality

SDG 5. Gender

SDG 10. Redu

ENVIRONM

SDG 7. Afford

SDG 11. Sust

SDG 13. Cima

SDG 14. Life

ECONOMIC



Wladimir

SOCIAL AXIS



GOAL SDG TUCUMÁN: REDUCE BY 50% THE PERCENTAGE OF PEOPLE BELOW THE LINE OF INDIGENCE IN THE PROVINCE OF TUCUMÁN BY 2030

Objective: SDG 1. End of Poverty

SDG target: By 2030, reduce by at least half the proportion of men, women and children of all ages living in poverty in all its dimensions according to national definitions (Target 1.2)

Indicator

Select the indicator to display

1

Percentage of people below the poverty line



Description

Definition: Proportion of people living in households whose income does not exceed the line of indigence defined on the basis of a Basic Food Basket determined based on the consumption habits of the defined population.

calculation mode: Quotient between individuals living in households whose income does not exceed the established indigence line over the total number of individuals in a given region times 100.

Periodicity: Biannual

Unit of measurement: Percentage

Coverage: Agglomerate Gran Tucumán - Tafí Viejo



Fountain: EPH-INDEC

Mainstreaming: Population living in poverty

Related initiatives: <https://matrizods.tucuman.gov.ar/iniciativa/porODSFull/8>



MATRIZ ODS
OBJETIVOS DE DESARROLLO SOSTENIBLE
PROVINCIA DE TUCUMÁN



PORTAL ODS
LINEAMIENTOS ESTRATÉGICOS
PARA EL DESARROLLO DE TUCUMÁN

Start

Members ▾

SDG Actions ▾

Lists by members ▾

SDG portal

SEP

SDI

Language | ▾

SDG Matrix

The SDG Matrix presents the integration and systematization of the public policies of the provincial State, the laws in force, the research projects of the scientific community, the initiatives of civil society organizations (OSC) and companies, in connection with the Objectives of Sustainable Development and the 2030 Agenda.

What are its functionalities?

- It integrates, systematizes and generates information as well as possible coordination spaces.
- It allows monitoring and analysis of government priorities and the academic and scientific sector.
- Contributes to transparency and use of information.

Government
initiatives

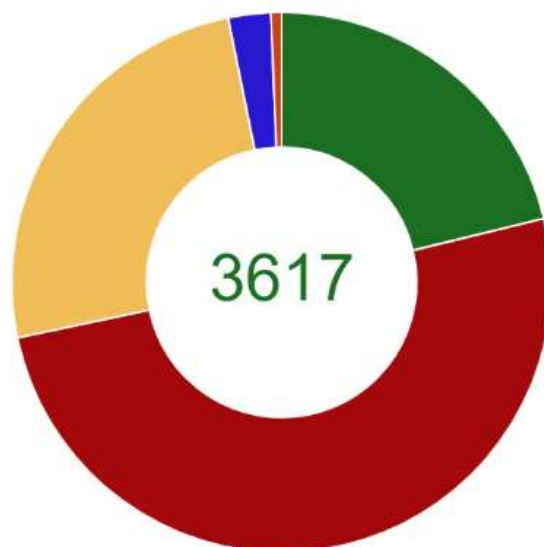
Current
Provincial Laws

Lines of
investigation

CSO initiatives
by SDGs

Company
initiatives

SDG Initiatives by Members



Quantities and percentages

767	Executive power	21.21%
1827	Legislative power	50.51%
908	Universities and Researchers	25.10%
92	CSOs	2.54%
23	Companies	0.64%



Start

Members ▾

SDG Actions ▾

Lists by members ▾

SDG portal

SEP

SDI



Language | ▾

Select a member to view in detail.

Member

all members ▾

Report

Click on the button to obtain a list of the information and export the table to Excel.



1 - End of poverty

SDG selected



Goal 1.01 Eradication of extreme poverty



Goal 1.02 Reduction of relative poverty in all its dimensions

By 2030, reduce by at least half the proportion of men, women and children of all ages living in poverty in all its dimensions according to national definitions



Company



CSOs



Executive power



Legislative power



Universities and Researchers



Attention and care to families at social risk-direct help

MINISTRY OF SOCIAL DEVELOPMENT / UNDERSECRETARIAT OF ATTENTION TO FAMILIES AT SOCIAL RISK

execution unit: Directorate of Direct Assistance

It consists of providing assistance (construction materials, furniture, clothing, tickets and stays due to health problems, burial service, etc.) to those families who are in a situation of social vulnerability and in the event of a climate emergency.



Management of National Identity Document

MINISTRY OF SOCIAL DEVELOPMENT

Execution unit: Document Management Unit

It consists of guaranteeing access to the procedure for obtaining the National Identity Document (DNI) for the first time, to those NN people in a situation of extreme vulnerability and who were never able to access the different State services.



Amachay Program

MINISTRY OF SOCIAL DEVELOPMENT / UNDERSECRETARY OF STATE FOR CHILDREN, ADOLESCENTS AND FAMILY

execution unit: Directorate of Children, Adolescents and Family

It consists of carrying out a comprehensive approach to children and adolescents living on the streets, aiming at the immediate restitution of the violated rights, specifically addressing the physical-emotional integrity of the children, through re-linking with the family and their belonging community.



Good job program for Tucumans

GENERAL SECRETARY OF THE GOVERNMENT/IPACYM - PROVINCIAL INSTITUTE OF COOPERATIVE AND MUTUAL ACTION

execution unit: Provincial Institute of Cooperative and Mutual Action (IPACyM)

It consists of the delivery of subsidies, tools, inputs and equipment to cooperative members.

Public Initiative: Attention and care to families at social risk-direct aid



Principal Organism: MINISTRY OF SOCIAL DEVELOPMENT

Secondary Organism: SUBSECRETARIAT FOR ATTENTION TO FAMILIES AT SOCIAL RISK

Initiative Type: Actions

Description:

execution unit: Directorate of Direct Assistance

It consists of providing assistance (construction materials, furniture, clothing, tickets and stays due to health problems, burial service, etc.) to those families who are in a situation of social vulnerability and in the event of a climate emergency.

Aim:

Comprehensively address structural assistance to improve the quality of life of vulnerable families.

With standard: DOES NOT APPLY

Implementation level: Fully implemented in the Province

Creation regulation: NONE

Observations:

In terms of Direct Aid to People, during 2020 a population of more than 150,000 people was assisted for climatic emergencies or for critical reasons (COVID-19) with more than 50,000 food modules, more than 6,000 sheets and 2,400 profiles, 13,000 mattresses, 8,000 pairs of slippers, 8,000 blankets, 9,000 beds and another 19,000 pieces of furniture. More than 21 boxes, 28 air tickets, 184 land tickets and more than 800 burial services, among others, were also delivered. Other products delivered in large volumes were diapers, clothing, milk, bookstores, bazaars, tools, and sheets, among others.

Work was done with the COVID-19 Emergency Operations Center, where beds, mattresses, sheets and quilts were provided for all the beds that made up the isolation centers, accompanying the Argentine Army in supplying food for said centers. He also worked jointly with SIPROSA on food assistance to all isolated families with low economic resources.

Year 2021: due to a climate emergency or for critical reasons (COVID-19) a population of more than 187,000 people was assisted with more than 92,000 food modules, more than 6,900 plates and 3,200 profiles, 14,744 mattresses, 13,397 pairs of slippers, 16,730 blankets, 11,002 beds and more than 10,000 pieces of furniture (1,608 tables, 8,659 chairs and 581 wardrobes, among others). Likewise, more than 22 boxes, 24 air tickets, 7 land tickets were delivered and more than 850 burial services were subsidized.

Goals by SDG to which it is linked:

end of poverty

→ By 2030, reduce by at least half the proportion of men, women and children of all ages living in poverty in all its dimensions according to national definitions

Put in place at the national level appropriate social protection systems and measures for all, including minimum levels, and, by 2030, achieve broad coverage of the poor and vulnerable

By 2030, build the resilience of the poor and people in vulnerable situations and reduce their exposure and vulnerability to climate-related extreme events and other economic, social and environmental crises and disasters

Close

Provincial Statistical System

<https://sep.tucuman.gob.ar/>



Provincial Statistical System

This site gives access to the official statistics of the Public Administration, regardless of the department which produces them. In this site each statistical service publishes and keeps its own data updated.

187
DATASETS

059
ORGANIZATIONS WITH DATA

¿Qué dataset buscás?



SDG 1: No poverty



SDG 2: Zero hunger



SDG 3: Good health and well-being



SDG 4: Quality education



SDG 5: Gender equality



SDG 6: Clean water and sanitation



SDG 7: Affordable and clean energy



SDG 8: Decent work and economic growth



SDG 9: Industry, innovation and infrastructure



SDG 10: Reduced inequalities



SDG 11: Sustainable cities and communities



SDG 12: Responsible consumption and production



SDG 13: Climate action



SDG 14: Life below water



SDG 15: Life on land



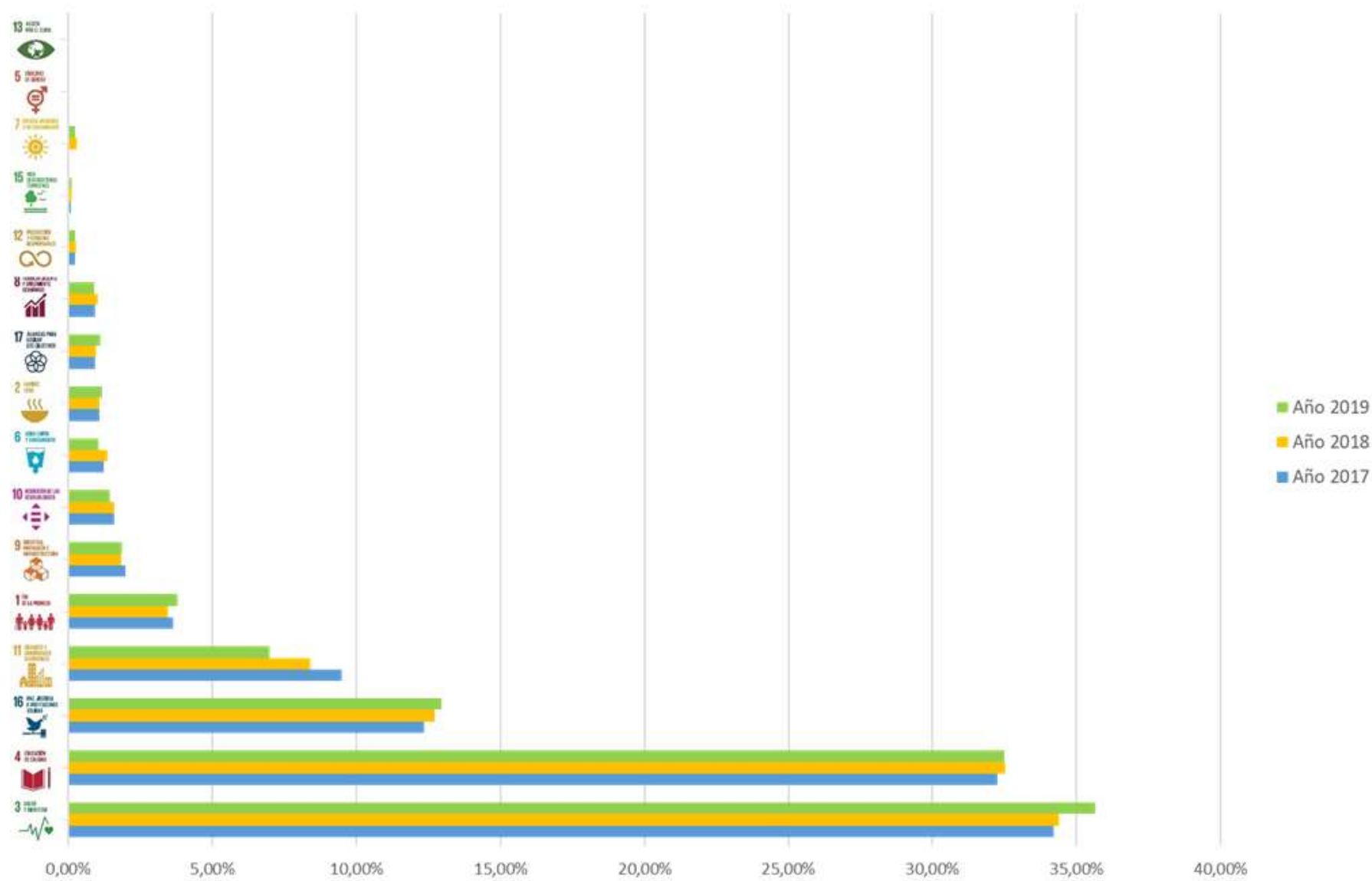
SDG 16: Peace, justice and strong institutions



SDG 17: Partnerships for the goals

Budget by sdg

Graph 3: Percentage participation of the budget by SDG period 2017 – 2019



Portfolio of projects 2020 by SDG

<http://mb.geosplan.tucuman.gob.ar/>

GeoSPlan

Servicios geográficos para la
**GESTIÓN PÚBLICA Y
PLANEAMIENTO**



- ☒ Project cluster 2020
- ☒ Project cluster 2020 ordered by SDG
- ☒ SDG 1: No poverty
 - ☒ Construction projects
 - ☒ Housing projects by location
- ☐ SDG 2: Zero hunger
- ☐ SDG 3: Good health and well-being
- ☒ SDG 4: Quality education
- ☒ SDG 5: Gender equality

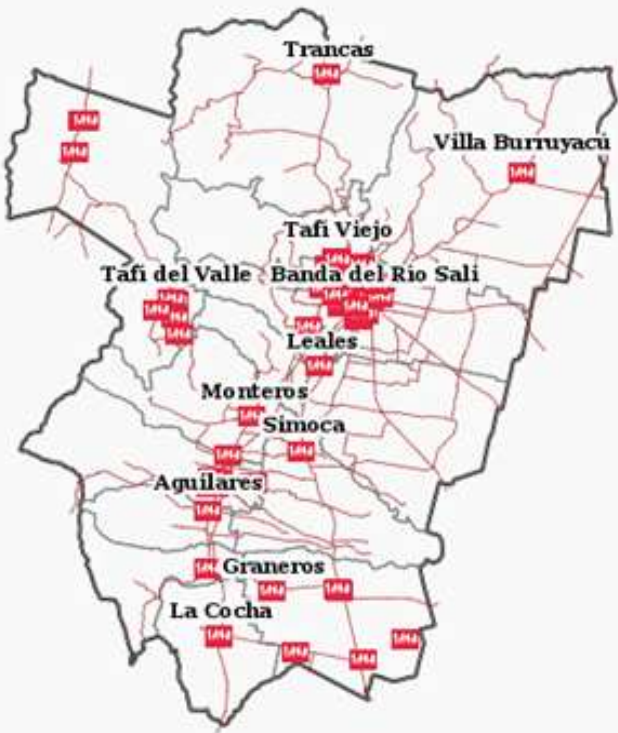
Project cluster 2020

Project: Comuna de Colalao del Valle

Project description: It arises as a need to solve the housing problem of needy people who live on their own or public land.

Topic: urban infrastructure

Goal: increase the housing infrastructure in the province.



ods.tucuman.gov.ar