



Local Governments  
for Sustainability

100%  
RENEWABLES  
CITIES & REGIONS  
ROADMAP

# Local Leadership in the Renewable Energy Transition and Green Hydrogen Economy

COP28 Side Event, SDG Pavilion  
6 December November 2023

**Rohit Sen**  
Head, Sustainable Energy  
ICLEI World Secretariat

Supported by:



Federal Ministry  
for Economic Affairs  
and Climate Action

IKI



INTERNATIONAL  
CLIMATE  
INITIATIVE

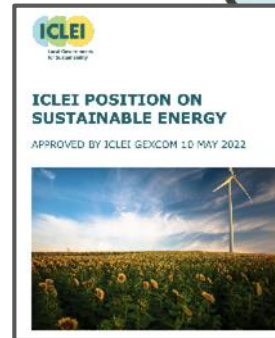
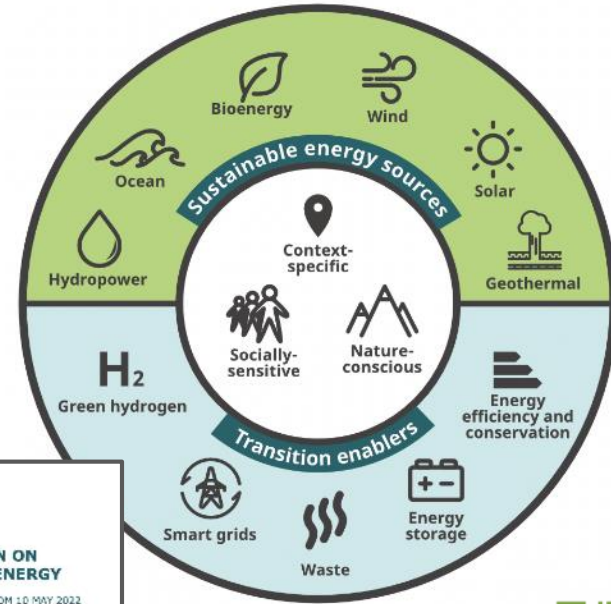
on the basis of a decision  
by the German Bundestag



# ICLEI's Sustainable Energy position

Building on the principles of sustainable development as defined by the United Nations, the definition of sustainable energy involves **meeting present energy needs without compromising the ability of future generations to meet theirs.**

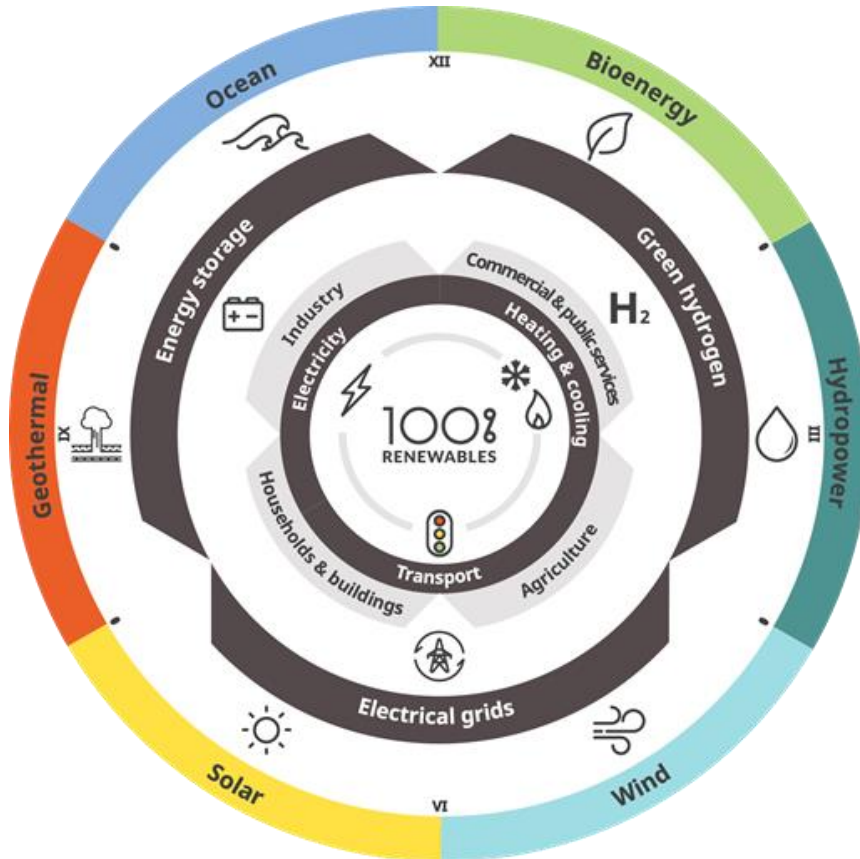
We consider that such an energy system must rest on the foundation of energy sources whose use in the present does not compromise their availability in the future, i.e. renewable energy. It is important that these renewable energy (RE) sources are applied in context-specific, nature-conscious and socially sensitive ways.



[Read the full text here](#)



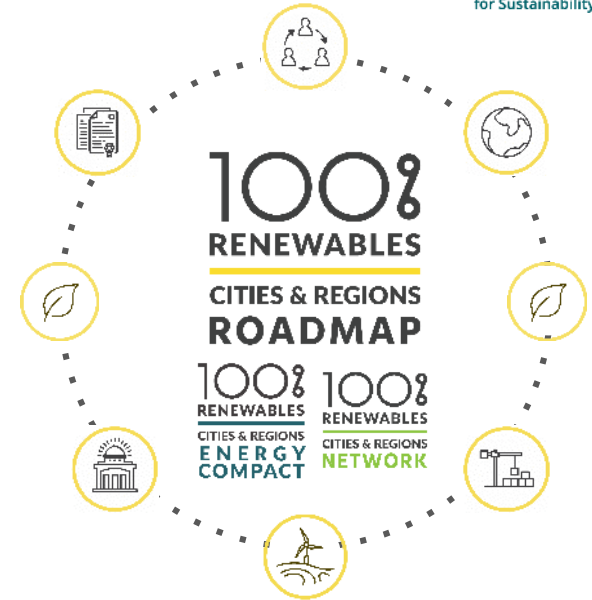
# 100% Renewables Cities and Regions



“Renewable energy encompasses all renewable resources, including **bioenergy, geothermal, hydropower, ocean, solar and wind energy**. One hundred percent renewable energy means that all sources of energy to meet all end-use energy needs in a certain location, region or country are derived from renewable energy resources **24 hours per day, every day of the year**. Renewable energy can either be produced locally to meet all local end-use energy needs (power, heating and cooling, and transport) or can be imported from outside of the region using supportive technologies and installations such as **electrical grids, hydrogen or heated water**. Any **storage facilities** to help balance the energy supply must also use energy derived only from renewable resources.”

-IRENA Coalition for Action

# Our work on 100% Renewables



Developing roadmaps towards 100% renewable energy

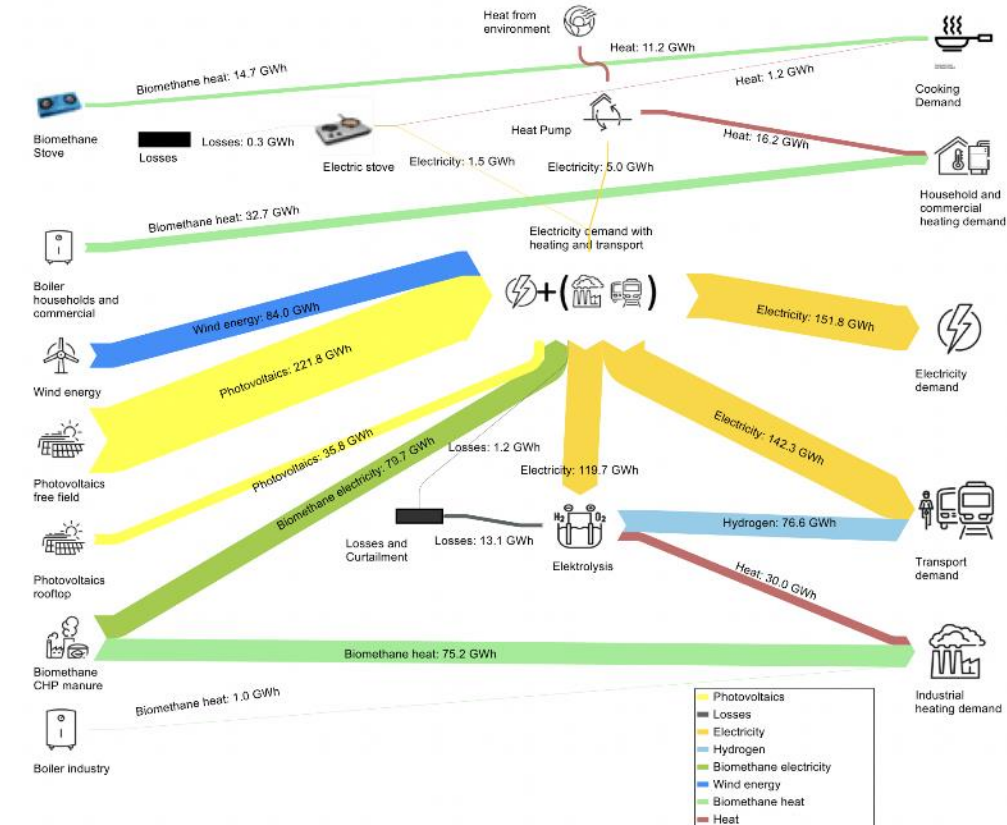
Assistance with local policy development

Enabling access to finance and developing bankable RE projects

Foster multilevel governance and strengthen capacities of key stakeholders

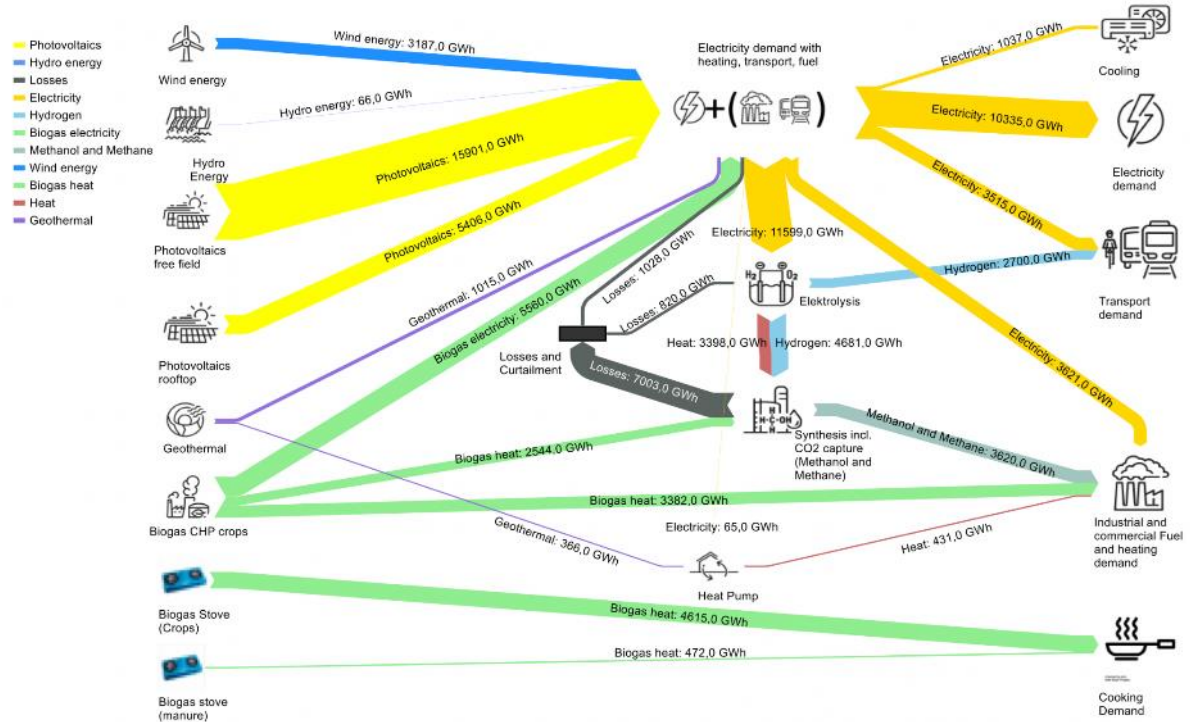
# 100% RE: Avellaneda, Argentina

Energy flow as outlined in the leading scenario for 100% renewable energy use by 2050:



# 100% RE: West Nusa Tenggara, Indonesia

Energy flow as outlined in the leading scenario for 100% renewable energy use by 2050:

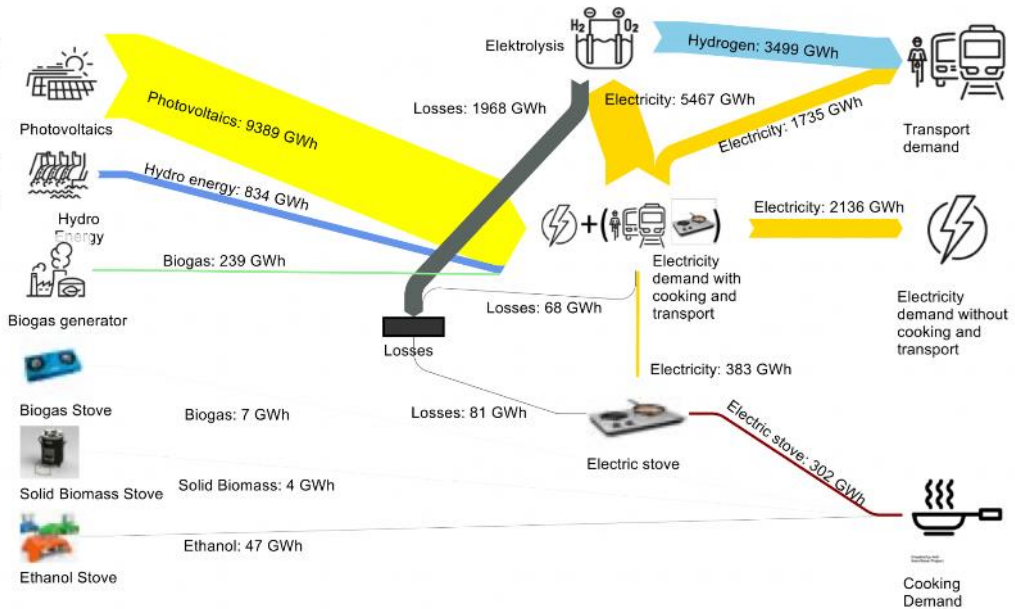


# 100% RE: Kisumu County, Kenya

Energy flow as outlined  
in the leading scenario  
for 100% renewable  
energy use by 2050:

## Kisumu, I

- Photovoltaics
- Hydro energy
- Losses
- Electricity
- Hydrogen
- Electric stove
- Biogas
- Solid Biomass
- Ethanol



# Developing bankable RE/EE projects

1. Ground-mounted 3.6 MW solar PV farm for Avellaneda, Argentina
1. Solar rooftops for healthcare facilities in West Nusa Tenggara, Indonesia
1. Energy audits, energy efficiency measures, clean cooking and solar rooftop for lighting and water pumping for 9 hospitals in Kisumu County, Kenya



*Photos for illustrative purposes only*





# Join the 100% Renewables Cities and Regions



100%  
RENEWABLES  
CITIES & REGIONS  
ENERGY  
COMPACT

100%  
RENEWABLES  
CITIES & REGIONS  
NETWORK



The 100% Renewables Cities and Regions Network and Energy Compact aim to support the **renewable energy transition in cities, towns and regions around the globe**, expanding and extending the support offer from the 100% Renewables Cities and Regions Roadmap project beyond the initial cohort of cities.

Contact:



# Contact us

**Sustainable Energy,**  
ICLEI World Secretariat  
E-mail: [sustainable.energy@iclei.org](mailto:sustainable.energy@iclei.org)

**100% Renewables Cities and Regions**  
Roadmap – Network – Energy Compact  
<https://renewablesroadmap.iclei.org/>

**carbonn Climate Center**  
E-mail: [carbonn@iclei.org](mailto:carbonn@iclei.org)

**ICLEI – Local Governments for  
Sustainability (WS)**  
Kaiser-Friedrich-Str. 7  
53113 Bonn  
Germany  
<https://iclei.org/>



Rohit Sen  
Head, Sustainable Energy  
ICLEI World Secretariat  
[rohit.sen@iclei.org](mailto:rohit.sen@iclei.org)

