

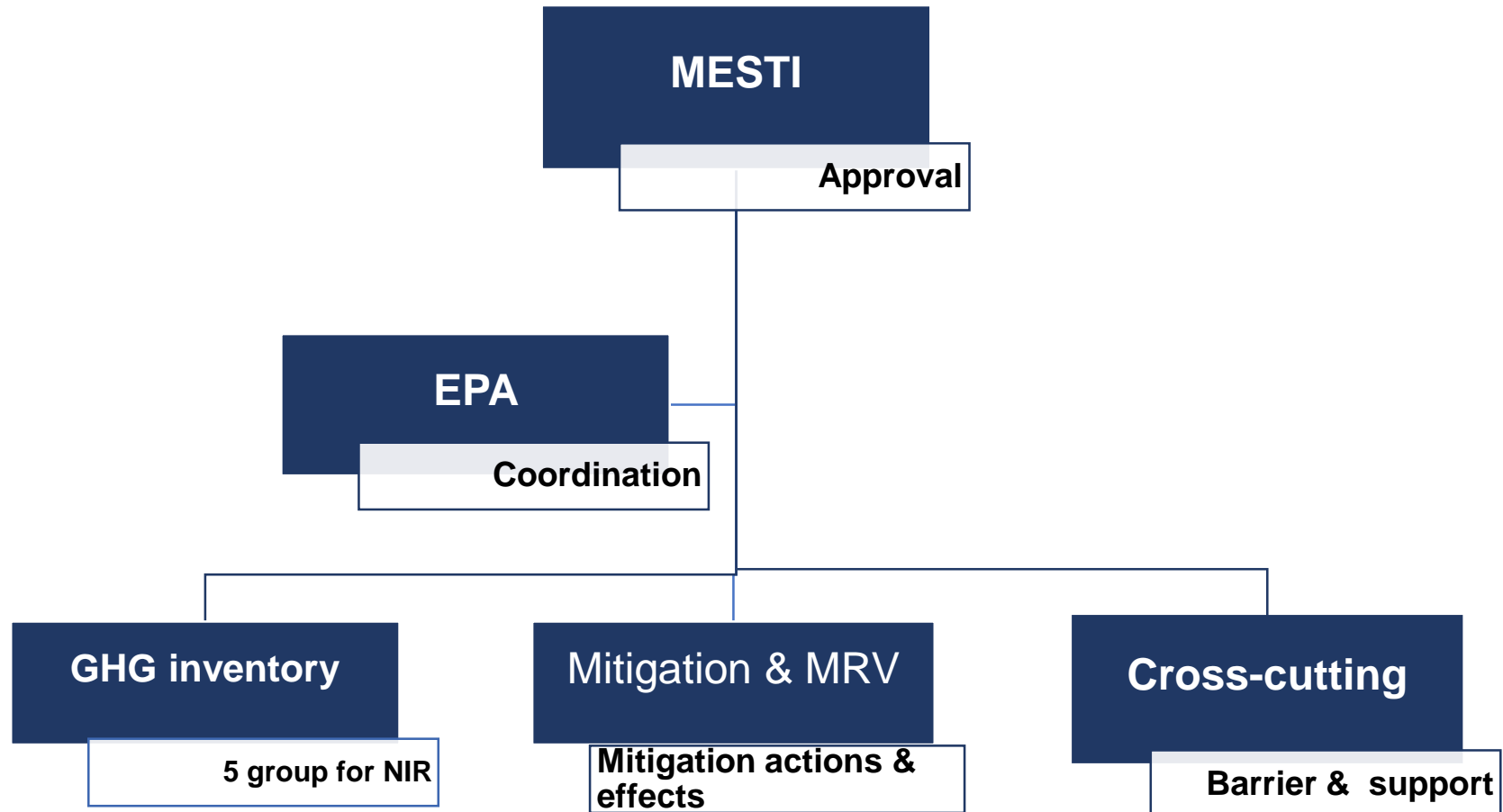


# Ghana's MRV Architecture

Dubai, United Arab Emirates  
5<sup>th</sup> December 2023



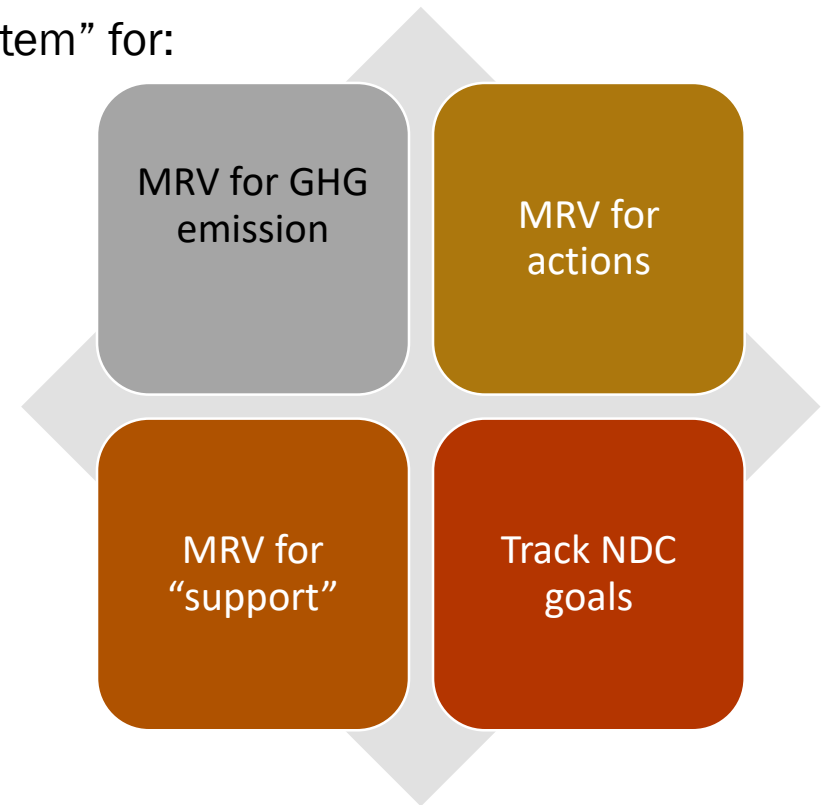
# Institutional arrangement for reporting



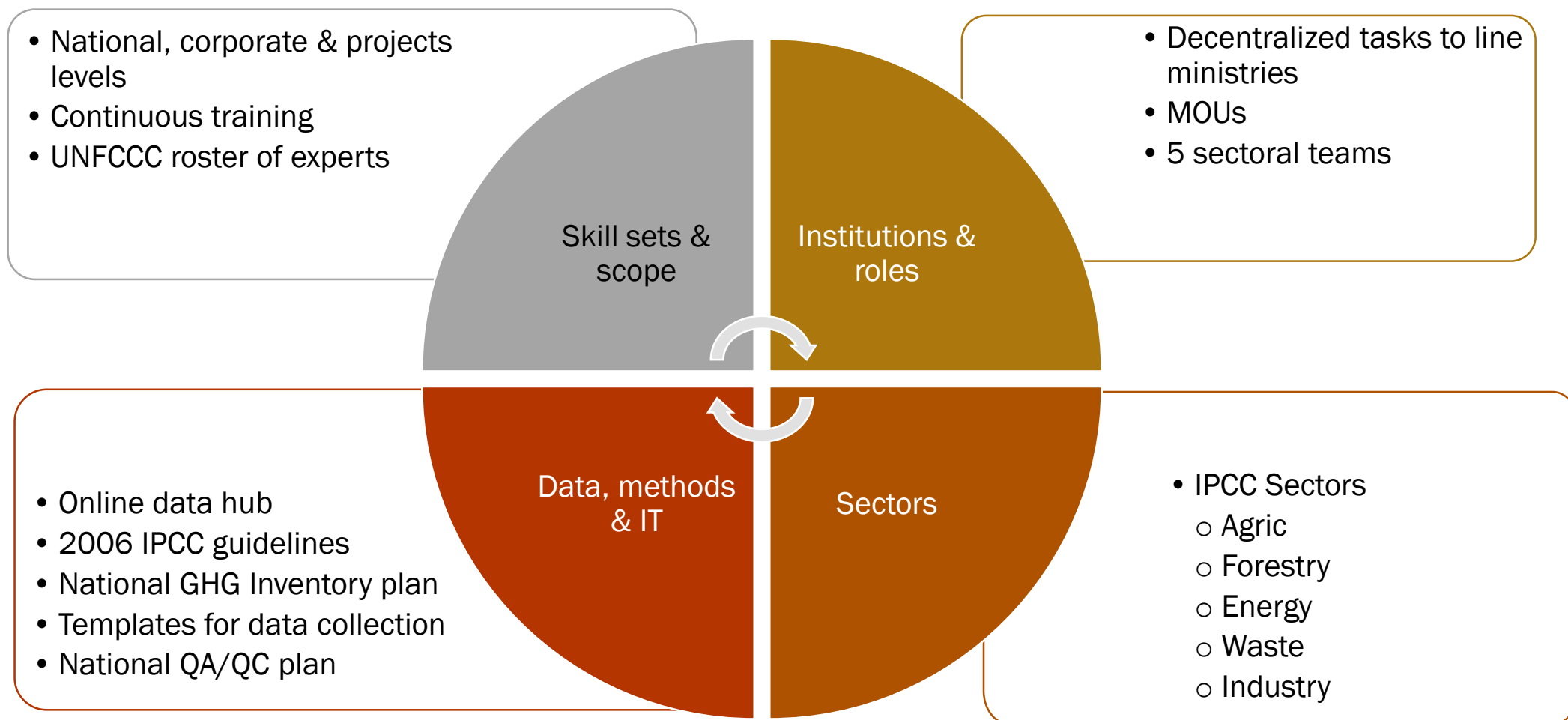
# Snapshot of the GCARP

National plan to put in place and operate an “integrated national system” for:

- ✓ Continuous data measurements & collection on
  - GHG emissions (in place)
  - mitigation actions (new)
  - climate support (new)
  - track progress of NDC targets (new)
- ✓ Preparation & compilation
- ✓ Domestic disclosure and international reporting
- ✓ Technical and “policy” review (verifications)

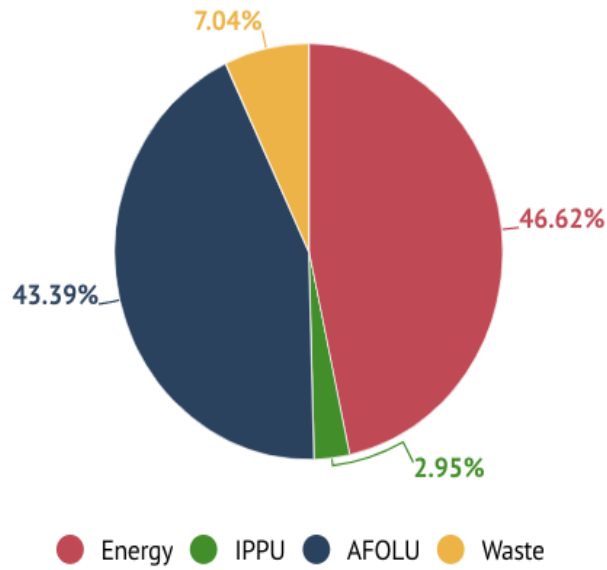


# National arrangement and procedures under G-CARP

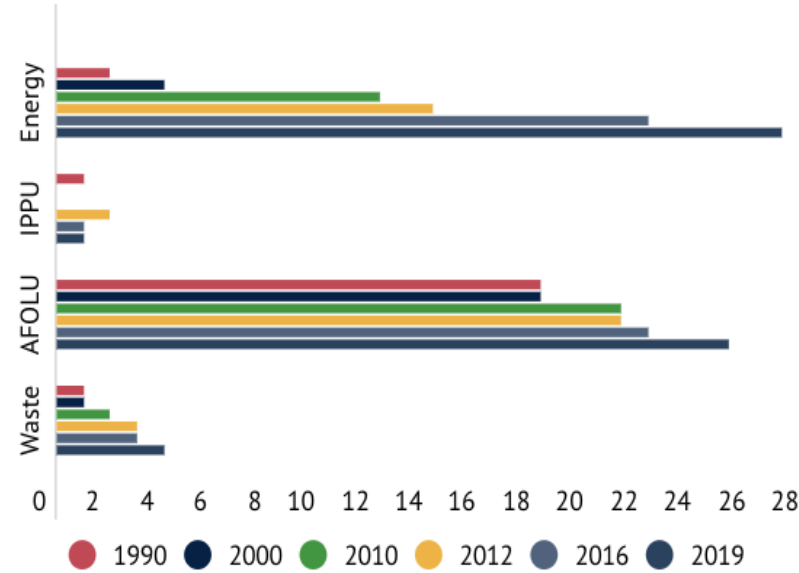


## Greenhouse Gas Emissions dashboard - Aggregate emissions

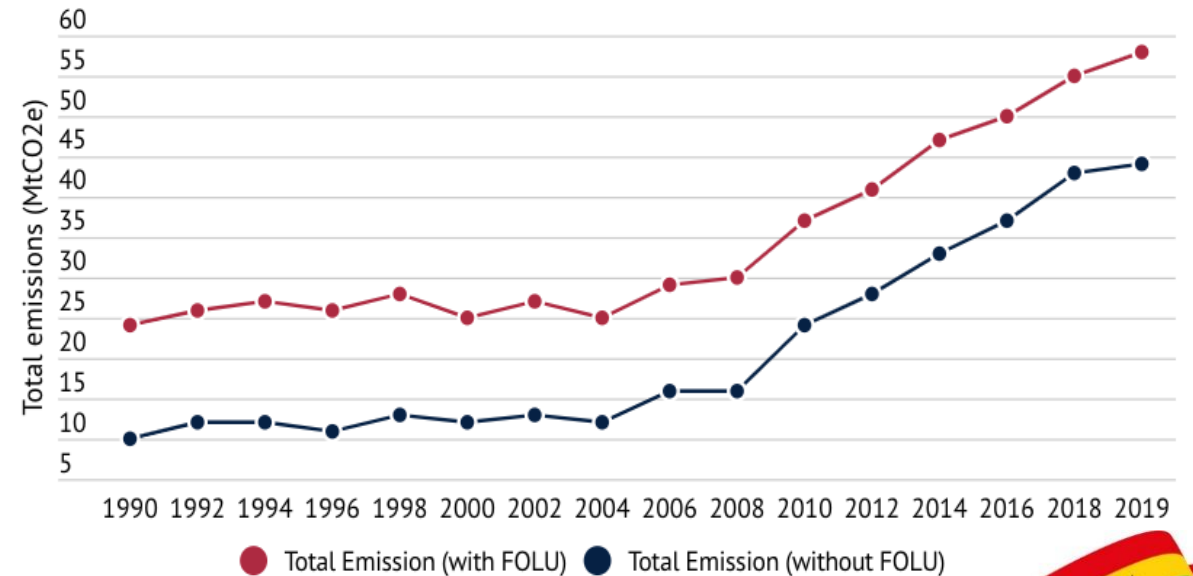
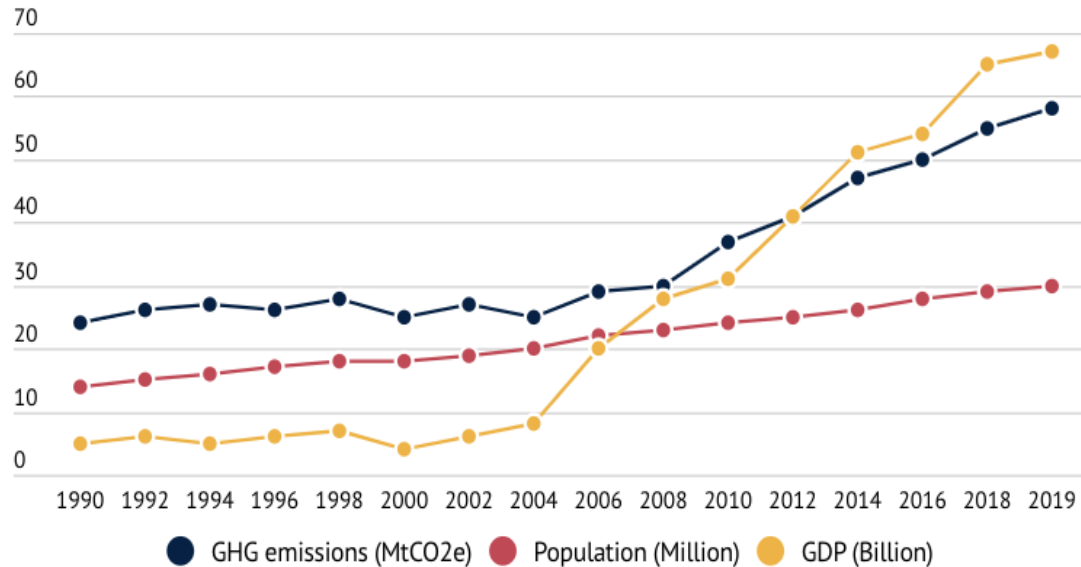
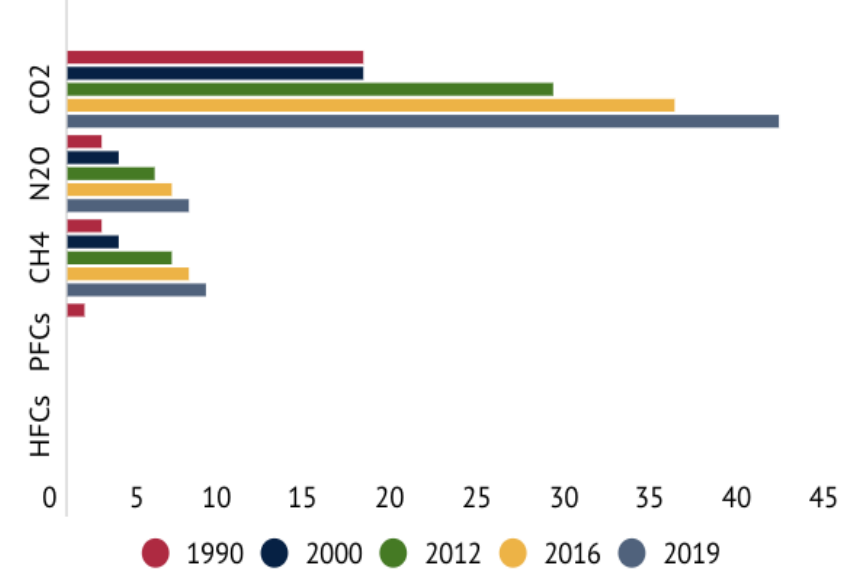
Distribution of GHG emission by sectors in 2019



Emissions per sector for 1990, 2000, 2012, 2016 & 2019 (MtCO<sub>2</sub>e)



GHG emissions by gas types for 1990, 2000, 2012, 2016 & 2019 (MtCO<sub>2</sub>e)



# Mitigation actions and their effects

## Mitigation target

BAU emissions of 100 MtCO<sub>2</sub>e by 2030

68 MtCO<sub>2</sub>e absolute mitigation target.

33 mitigation actions in energy, transport, oil & gas, waste, IPPU and LULUCF sectors

## Actions

14 measures reported in BUR3 in energy, forestry, waste, RAC and transport sectors.

GHG and non-GHG effects of 12 measures have reported in the BUR3

## Progress & Achievements

25.3 Mt/year mitigation outcomes

43% reduction of 2019 emissions

Without the LULUCF effects, mitigation outcomes represent 20.84 Mt/year

Investments: 1,317 \$mio

## Co-benefits

Fuel cost savings - 94-109 \$mio

600k direct and indirect jobs

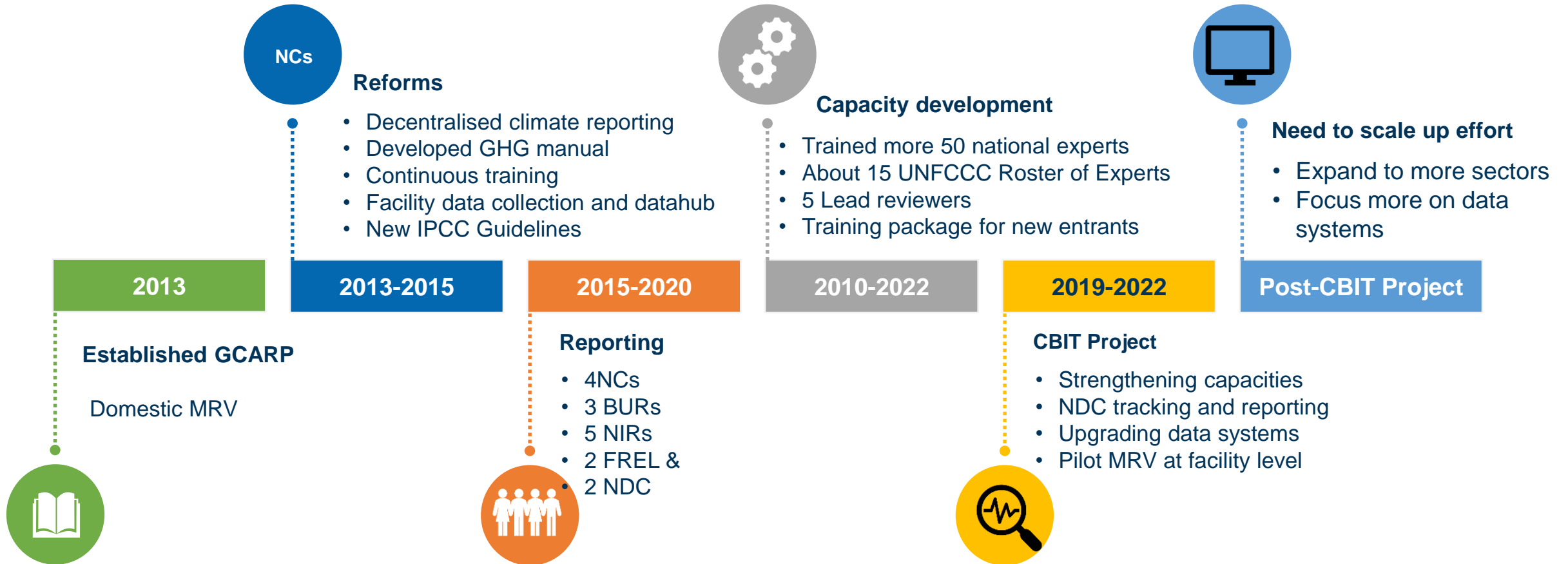
82.2 GWh per/year renewable energy produced



# Barriers

- Full implementation of “domestic MRV” can be a slow and “tough” endeavor.
- Limited funds >>>> donor-dependent and no/low national budgetary allocation)
- Low visibility of MRV results for policy decision-making.
- Inadequate access to good quality data >>>> missing data, non-existing data
- Capacity gap >>>> involvement local government and private sector)
- General lack of awareness
- Slow operationalisation of planned institutional arrangement >>>> it takes time to get what is on paper to become a reality).

# Transition to ETF Reporting





**Thank you for listening**



AD 1957

· F R E E D O M   A N D   J U S T I C E ·

