

Water in the World We Want: Using SDG-PSS to support evidence-based policymaking around SDG6

Zeineb Bouhlel

United Nations University Institute for Water, Environment, and Health (UNU-INWEH)

Hamilton, Ontario, Canada

Asia Regional Workshop 23-24 Nov 2021, Republic of Korea



UNITED NATIONS
UNIVERSITY

UNU-INWEH

Institute for Water,
Environment and Health

Water-related sustainable development within the 2030 Agenda

- The 2030 Agenda established 17 SDGs and 169 global targets
- The **SDG 6** – *Ensure availability and sustainable management of water and sanitation for all*
- Other SDGs with specific water-related targets are also critical for achieving SDG 6 by 2030.



UNITED NATIONS
UNIVERSITY

UNU-INWEH

Institute for Water,
Environment and Health

SDG 6 Status

SDG 6 Synthesis Report (July 2018) confirms that :

The world at large is lagging in achieving SDG 6: SDG 6 will be missed in 2030

- Less than half of the UN Member States have comparable data available on the status of progress made towards SDG 6 targets.
- Lack of mechanisms to track SDG 6 targets and indicators.
- Implications for water-related targets embedded in other SDGs.



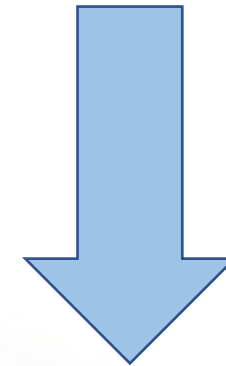
UNITED NATIONS
UNIVERSITY

UNU-INWEH

Institute for Water,
Environment and Health

Actions for SDG 6 in a 'Decade of Action'

- Develop **interventions that work in data-limited conditions**
- Strengthen and realign **enabling environments** as a Means of Implementation (SDG 6.a, 6.b, and SDG 17) to fast-track the achievement of SDG 6
- Provide a **collaboration platform** to help countries improve their data analysis, reporting and progress toward achieving SDG 6 and other water-related SDG targets.



**Project
Water in the World We Want**



UNITED NATIONS
UNIVERSITY

UNU-INWEH

Institute for Water,
Environment and Health

Navigating through data-limited situations

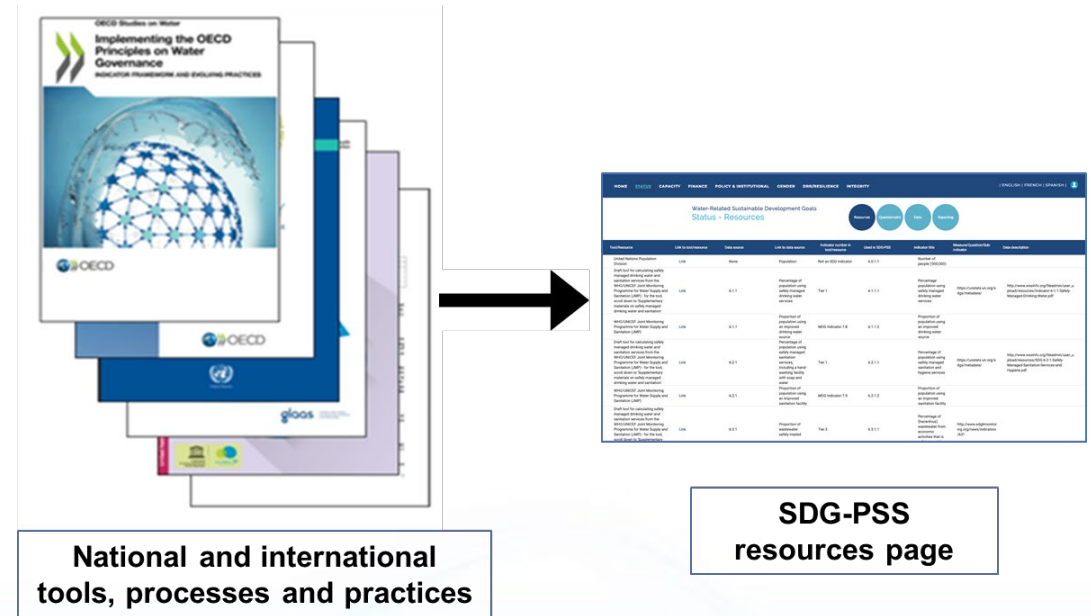
“Water in the World We Want”



- **Purpose:** to help countries improve their data analysis, reporting, and progress toward achieving SDG 6 and other water-related SDG targets, in data-limited conditions

SDG-PSS was created to :

- ✓ Supports policy and decision-making
- ✓ Produce evidence on the enabling environment
- ✓ Enable collaboration between experts and decision-makers.



Summary View: Sustainable Development Goal 6, Evidence Base

Water-related SDG Targets	National Aspiration	Status - % Goal	National Capacity			Finance					Policy & Institutional				Gender Mainstreaming			DRR/Resilience		
			Priority needs	Strength in existing mechanisms	Adaptation program	Adequacy of financial flows?	Accountability	Attracting funding sources	Financially viable services provided?	Funding for vulnerable groups	Institutions	Role/ responsibilities	Coordinating/ joint cooperation	Awareness	National policy	Government	Organization	Strategies	Information and knowledge	Infrastructure
6.1 By 2030, achieve universal and equitable access to safe and affordable drinking water for all	100% of population using safely managed drinking water services																			
6.2 By 2030, achieve access to adequate and equitable sanitation and hygiene for all and open cooperation, paying special attention to the needs of women and girls and those in vulnerable situations	90% of population using safely managed sanitation and hand-washing services																			
6.3 By 2030, improve water quality by reducing pollution, eliminating dumping and minimizing release of hazardous chemicals and materials, halving the proportion of untreated wastewater and substantially increasing recycling and safe reuse globally	100% of waste water safely treated 30% of bodies of water with good water quality																			
6.4 By 2030, substantially increase water-use efficiency across all sectors and ensure sustainable withdrawals and supply of freshwater to address water scarcity and substantially reduce the number of people suffering from water scarcity	30% change in water use efficiency 2% of total available water resources used																			
6.5 By 2030, implement integrated water resources management at all levels, including through transboundary cooperation, as appropriate	Score of 67.5 for water implementation 100% transboundary basins have water cooperation arrangements																			
6.6 By 2030, protect and restore water-related ecosystems, including mountains, wetlands, forests, rivers, estuaries and coastal seas	32% change in the state of water-related ecosystems																			



<https://sdgpss.net/>





Collaborative
efforts
(2016 – Today)

JOURNEY TO SDG-PSS

Phase I
2016 - 2018

Contextualization

UNU-INWEH; UNOSD ; Ministry of Environment of Republic of Korea, the Korea Environment Corporation (K-eco) and **national partners** from Ghana, Tunisia, Pakistan and Costa Rica.

- enabling environment
- data-limited situations
- SDG-PSS

Phase II
2019 - 2020

Implementation

Project partners and SDG-PSS Regional Hubs (*Tunisia, Pakistan, Republic of Korea and Costa Rica*) organized regional workshops in Africa and the Middle East, Asia, and Latin America and the Caribbean.

- **34 countries are engaged**
- **e-course training**
- **Different languages**

Phase III
2021-2023

Refinement and Straightening collaboration

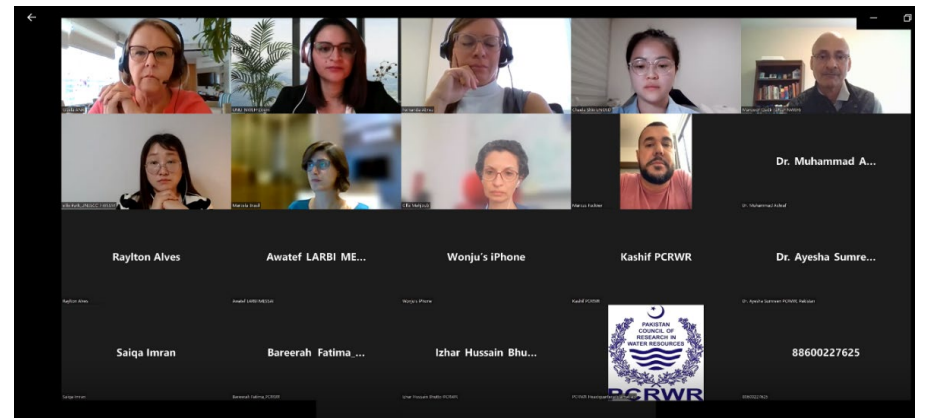
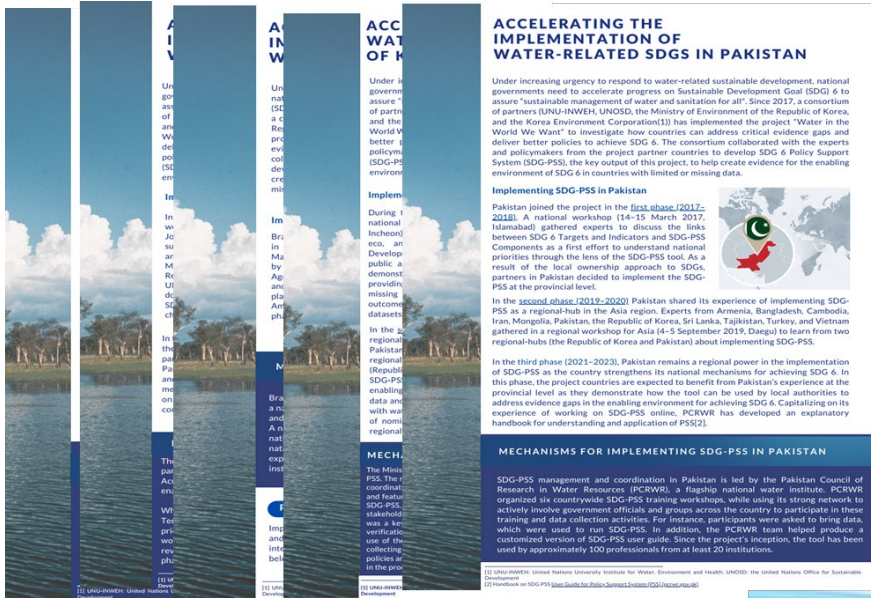
- Engage more countries
- Lessons learned
- Increase collaboration with new countries

SDG-PSS in Phase III (2021-2023)

New partners: UNESCO i-WSSM and K-water

Lessons Learned from Hub-countries:
Pakistan, Korea ; Tunisia, and Brazil

- Hub-countries workshops
- Country brochures



Virtual workshop
May 2022



Side Event in Water Action Decade Conference:
Building Evidence for Water-related Policy Making
(Dushanbe, Tajikistan).
June 2022

SDG- PSS in Practice



UNITED NATIONS
UNIVERSITY

UNU-INWEH

Institute for Water,
Environment and Health

SDG 6 Policy Support System (SDG-PSS)

- SDG-PSS is an online system where countries can enter data, information, and trends and translate them into 'fit-for-policy' evidence.
- The enabling environment of SDG 6 is translated through **six policy critical components** along with a component 'Status'.
- Currently, the tool is available in **English, French, Spanish, Portuguese, Korean, and Arabic** languages.



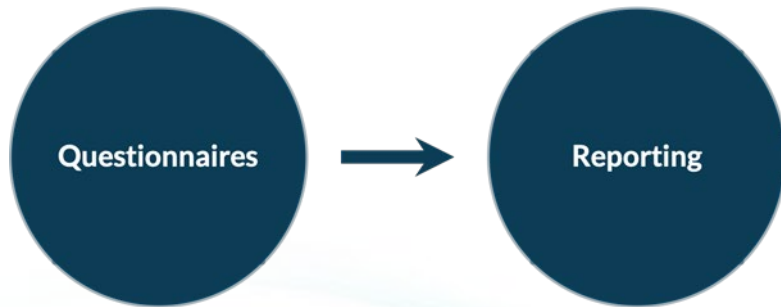
UNITED NATIONS
UNIVERSITY

UNU-INWEH

Institute for Water,
Environment and Health

SDG 6 Policy Support System (SDG-PSS)

SDG-PSS aims to produce evidence at the indicator level for SDG 6.



UNITED NATIONS
UNIVERSITY

UNU-INWEH

Institute for Water,
Environment and Health

SDG-PSS Workflow

Data and information



Water-Related Sustainable Development Goals Capacity - Questionnaire

Questionnaire Reporting

The answers to this questionnaire will allow the SDG-PSS to present an overarching perspective of the critical priorities, needs and gaps concerning water-related policies. The approach and process used to answer this questionnaire may vary between countries. However, the key to answer this questionnaire is to conduct a high-level discussion and reach an agreement with different water experts involved in the collection of the data for this component.

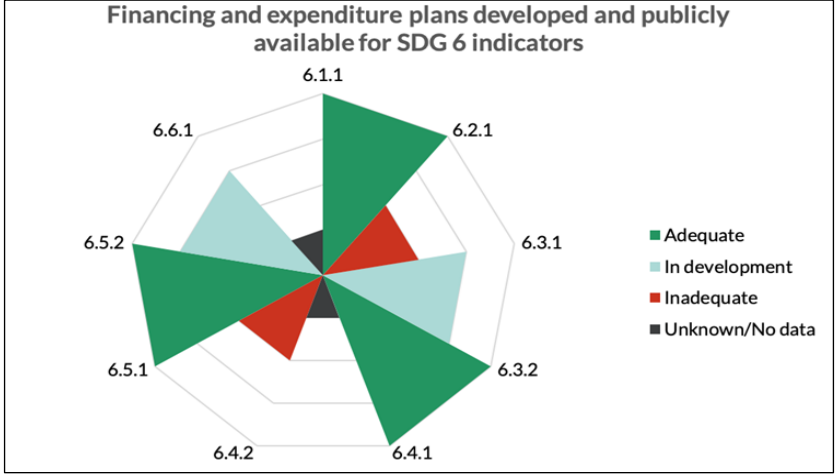
Since SDG 6 targets and indicators cover a wide range of water-related dimensions, water experts from different agencies and institutions may answer these questions differently based on a specific SDG 6 target or indicator.

This questionnaire is organised systematically. At the bottom of the page, a button allows the user to save the answers already entered in the questionnaire.

For more information and description of this component, please go to the User Guide.

Target 6.1: By 2030, achieve universal and equitable access to safe and affordable drinking water for all				
Indicator 6.1.1 Proportion of population using safely managed drinking water services				
6.1.1.1 Do national policy and implementation plans have mechanisms to address capacity building for this indicator?	Yes <input type="radio"/>	No <input type="radio"/>	Unknown <input type="radio"/>	In Development <input type="radio"/>
6.1.1.2 What capacity is available at the national level to achieve the agreed aspiration for this indicator?	Adequate Capacity <input type="radio"/>	No Capacity <input type="radio"/>	Unknown <input type="radio"/>	Inadequate Capacity <input type="radio"/>
6.1.1.3 Are lead Ministries/institutions on track to build critical capacity for implementation of action plans for this indicator?	Yes <input type="radio"/>	No <input type="radio"/>	Unknown <input type="radio"/>	In Development <input type="radio"/>

Questionnaire



Target	Indicator	Capacity			Finance			Policy & Institutional		
		Current capacity	Overall Progress	Strengthening mechanisms	Accountability	Financial Planning	Public Incentives	Policy Planning and Equity	Coordination & cooperation	Public awareness
6.1	6.1.1 Proportion of population using safely managed drinking water services	Inadequate	No evidence	Adequate	In progress	In progress	In progress	Adequate	No evidence	In progress
6.2	6.2.1 Proportion of population using safely managed sanitation services, including a hand-washing facility with soap and water	No evidence	In progress	Inadequate	No evidence	Adequate	Inadequate	Inadequate	In progress	Adequate
6.3	6.3.1 Proportion of wastewater safely treated	In progress	Adequate	No evidence	In progress	Inadequate	No evidence	Adequate	Adequate	Inadequate
	6.3.2 Proportion of bodies of water with good ambient water quality	Adequate	Inadequate	In progress	Adequate	In progress	In progress	Adequate	Inadequate	No evidence
	6.4.1 Change in water-use efficiency over time	Inadequate	No evidence	Adequate	Inadequate	Adequate	Adequate	Adequate	No evidence	In progress

Reporting

SDG 6 Policy Support System (SDG-PSS)

Summary Page for policy and decision making

Target	Indicator	Capacity			Finance			Policy & Institutional		
		Current capacity	Overall Progress	Strengthening mechanisms	Accountability	Financial Planning	Public Incentives	Policy Planning and Equity	Coordination & cooperation	Public awareness
6.1 By 2030, achieve universal and equitable access to safe and affordable drinking water for all	6.1.1 Proportion of population using safely managed drinking water services	Inadequate	No evidence	Adequate	In progress	In progress	In progress	Adequate	No evidence	In progress
6.2 By 2030, achieve access to adequate and equitable sanitation and hygiene for all and end open defecation, paying special attention to the needs of women and girls and those in vulnerable situations	6.2.1 Proportion of population using safely managed sanitation services, including a hand-washing facility with soap and water	No evidence	In progress	Inadequate	No evidence	Adequate	Inadequate	Inadequate	In progress	Adequate
6.3 By 2030, improve water quality by reducing pollution, eliminating dumping and minimizing release of hazardous chemicals and materials, halving the proportion of untreated wastewater and substantially increasing recycling and safe reuse globally	6.3.1 Proportion of wastewater safely treated	In progress	Adequate	No evidence	In progress	Inadequate	No evidence	Adequate	Adequate	Inadequate
	6.3.2 Proportion of bodies of water with good ambient water quality	Adequate	Inadequate	In progress	Adequate	In progress	In progress	Adequate	Inadequate	No evidence
6.4 By 2030, substantially increase water-use efficiency across all sectors	6.4.1 Change in water-use efficiency over time	Inadequate	No evidence	Adequate	Inadequate	Adequate	Adequate	Adequate	No evidence	In progress



Adequate progress towards the achievement of a specific SDG 6 indicator.



Work-in-progress that needs to be maintained for a specific SDG 6 indicator.



Inadequate progress that needs attention towards achieving a specific SDG 6 indicator.



No data or information available to showcase the status of progress for a specific SDG 6 indicator.



UNITED NATIONS
UNIVERSITY

UNU-INWEH

Institute for Water,
Environment and Health

Facilitating the use of SDG-PSS

- **Self-paced** e-course on SDG-PSS available online to all potential users.
- It provides **training** on how to use this system to produce evidence on the enabling environment for achieving SDG 6.

<http://wlc.unu.edu/courses/course-v1:UNU-INWEH+INWEH-03+2019/about>



SDG 6 Policy Support System

In order to address capacity building for effective use of the SDG-PSS, this online course provides training and teaching on how to use this tool to produce evidence and data on the enabling environment of the SDG 6.

[Enroll Now](#)



Course Start
Mar 01, 2019



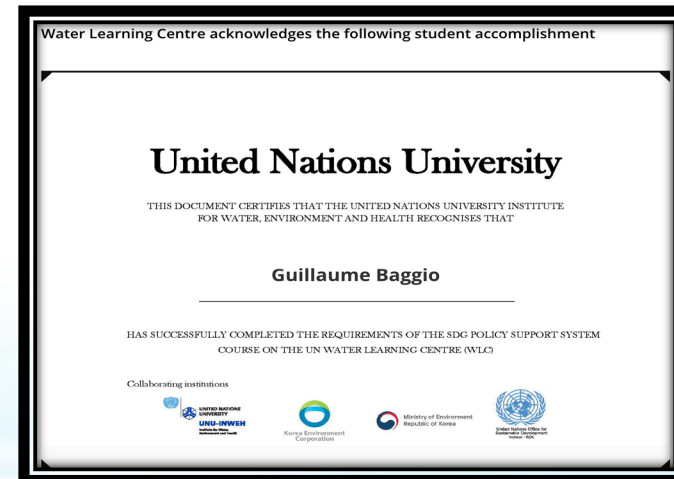
Course End
Sep 30, 2022



Duration
03:00 hours



Certificate
Yes



UNITED NATIONS
UNIVERSITY

UNU-INWEH

Institute for Water,
Environment and Health

SUMMARY

- SDG-PSS summarizes **critical information that is missing** in national processes
- Guides countries in gathering and analyzing the relevant information, and helps understand the status of **progress on SDG 6 at the indicator level**.
- Encourages cooperation between agencies and the water research community in a **joint policy development process**.
- SDG-PSS has the potential to become a powerful knowledge-sharing platform for **learning between countries**.
- It can be tailored to address the requirements of **other SDGs**.



UNITED NATIONS
UNIVERSITY

UNU-INWEH

Institute for Water,
Environment and Health

SDG 6 Policy Support System (SDG-PSS)

The SDG-PSS is designed as part of the project 'Water in the World We Want' to enable water experts, researchers, and government actors to collaborate and produce national-level evidence on the enabling environment to achieve SDG 6.



Register

Sign In



Thank you

Zeineb.Bouhlel@unu.edu

Other slides (questions)

Figure 2 Tools used to development different components of SDG-PSS

