

Using SDG 6 Policy Support System (SDG-PSS) in “Country”

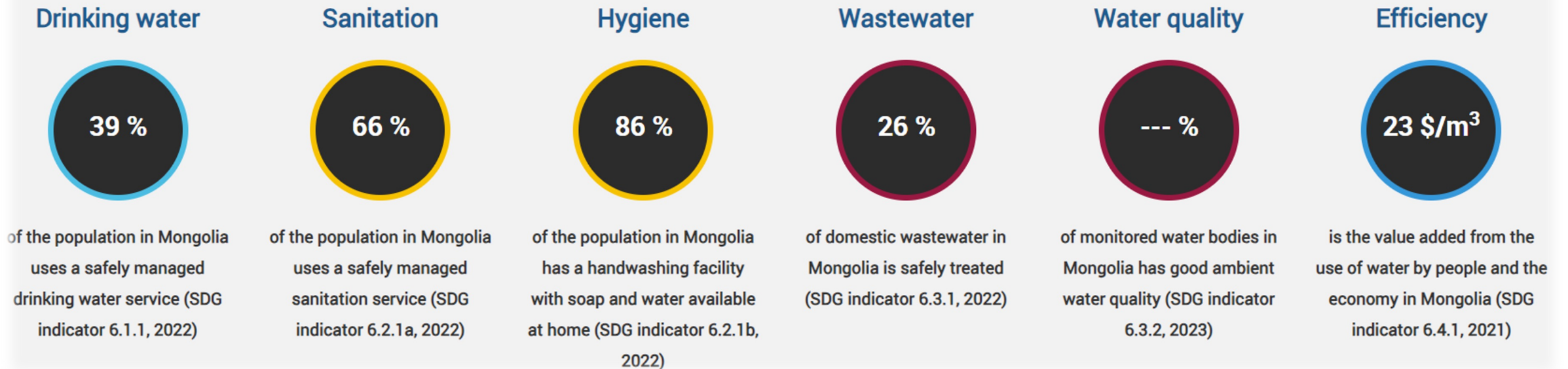
Tsozolmaa Khurelbaatar, The Climate Change Research and Cooperation Centre, Ministry of Environment and Tourism

Project “Water in the World We Want”
Phase 4: Accelerating the achievement of water-related SDGs
Asia Workshop, 11-12 June 2024, Dushanbe, Tajikistan

Overall status of SDG 6 at the national level

- Overall status of SDG 6 achievement (Achievements, key water- and sanitation-related challenges). Potential impact (how many people may benefit) if SDG 6 targets and indicators are achieved in your country by 2030?

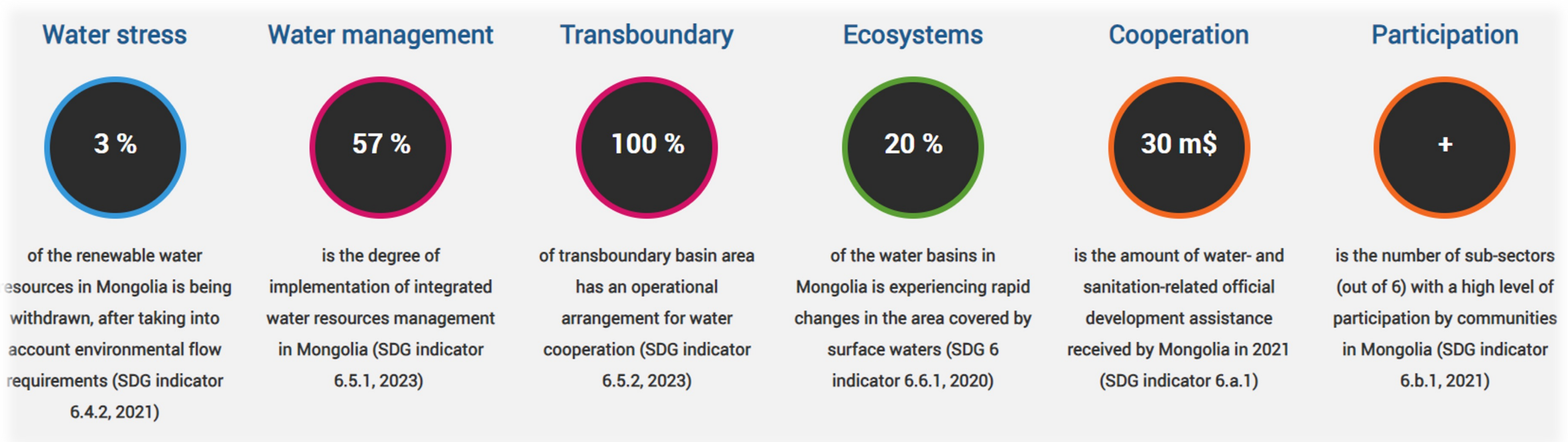
SDG 6 snapshot in Mongolia



Source: SDG 6 Data Portal of the UN

Overall status of SDG 6 at the national level

- Overall status of SDG 6 achievement (Achievements, key water- and sanitation-related challenges). Potential impact (how many people may benefit) if SDG 6 targets and indicators are achieved in your country by 2030?



Source: SDG 6 Data Portal of the UN

National agencies involved in SDG 6 achievement

Names of the ministries, national institutions, any other relevant entity:

- National Statistical Office;
- Ministry of Construction and Urban Development;
- Ministry of Environment and Tourism;
- Ministry of Health;
- Ministry of Finance;
- Government Agencies;
- International organizations (UNEP, FAO, etc.);
- NGOs;
- Academic institutions and others.

SDG 6 target(s) and indicator(s)

- Most important target(s) and indicator(s)

SDG 6.4.2. “Level of water stress: freshwater withdrawal as a proportion of available freshwater resources” of **SDG 6.4.** Reasons are:

- water scarcity;
- uneven distribution of water resources;
- limited rainfall;
- demand exceeding supply in the Gobi region;
- inadequate water infrastructure in urban areas;
- institutional fragmentation;
- and highly vulnerable to climatic conditions.

- Least important target(s) and indicator(s)

- All targets and indicators are important.

Reflections on SDG-PSS and its online course

- Contribution of SDG-PSS online course in using SDG-PSS and navigating its main features? Was the course helpful in using SDG-PSS or not? What is needed to improve the course further?
- Learned to navigate through the SDG-PSS pages and its components, and to use the SDG-PSS to generate and analyze evidence on the national status and progress and the enabling environment of the achievement of SDG 6.
- The tool allows us to assess and see our current status and progress toward SDG 6 which gives a great opportunity to see strengths, and weaknesses and make the right decision to enable the environment of SDG 6 at the national level.
- User-friendly interface
- Time saving (can work as a team at the same time)

Relevance of SDG-PSS Components

- Most relevant components of SDG-PSS in the national context and why?

Capacity, Finance, and Policy and Institutional Assessments are most relevant.

➤ Common challenges that we are facing to achieve SDG 6.

- Least relevant components of SDG-PSS in the national context and why?

➤ All 6 components are crucial to tackle water related challenges to achieve SDG6.