

Inclusive education for children with disabilities in developing countries

August 19, 2022

Group 9:

Shakerra Bartley, Nguyen Chien Thang, Anna Ivanchenko, Jane Seng



Contents

Part 1: Introduction

Part 2: Target

Part 3: Solution

Part 4: Outcomes

Part 5: Testing plan

Introduction



Goal 4. Ensure inclusive and equitable quality education and promote lifelong learning opportunities for all

Target 4.5: By 2030, eliminate gender disparities in education and ensure equal access to all levels of education and vocational training for the vulnerable, including persons with disabilities, indigenous peoples and children in vulnerable situations.

Introduction

Children with disabilities

- 01** marginalized and excluded groups
- 02** excluded from school than their peers without disabilities
- 03** not complete primary or secondary education
- 04** inequality grows as the level of education advances
- 05** the role of disability: the most dominant in contributing to whether children attended school or not. (UNICEF, 2016)
- 06** have never entered school in the first place.

Target

Target audience

Children between the ages of 4 and 11 years of age in primary school

Why?

**Stop the cycle where it starts
Early socialization helps children understand and properly use verbal and nonverbal communication to express ideas and feelings.**

Our Solution:

a curriculum for primary schools designed to create a safe space for both groups of children



Cultural change



**Respect for
diversity**



**Participatory
learning**

1

A range of specially curated activities that are attractive and beneficial to both groups of students

2

Creating an inclusive culture, not charity.

3

Activities will be conducted with the support of facilitators and teachers.

Outcomes

Fostering partnerships
between schools



01 Knowledge exchange

--> lack of trained teachers/
expertise in public schools

02 Communication and interaction

--> lack of understanding towards
the other

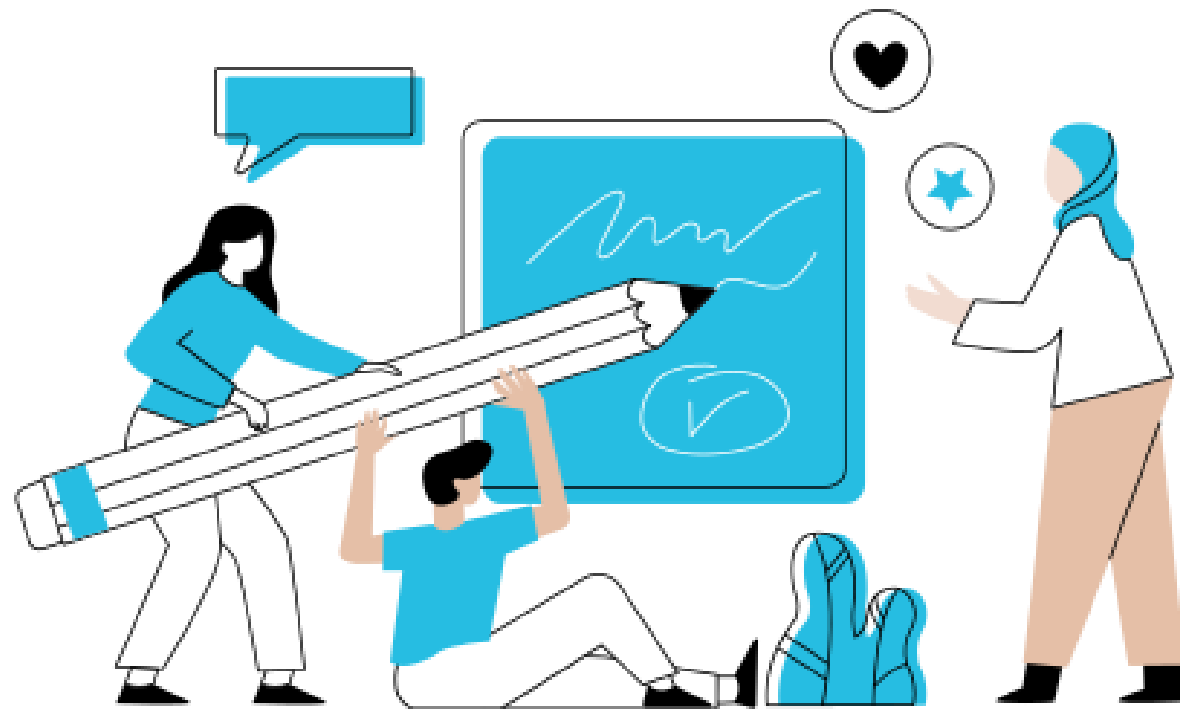
03 Safe spaces to interact

--> segregation between the two



ULTIMATE OUTCOME

- Long term partnership between schools to foster understanding between students of both abilities
- Start proper conversations that could bring in resources and funding to create an inclusive learning environment




Testing plan

Testing plan:

- **Have a study of 10 class within a total of 15–20 students each : between two schools**
- **Gather teachers and have them implement the curriculum**
- **Monitor major changes in behavior**

Program evaluations:

- **Open Interviews with teachers and students**
- **Prior to program start, 3 months, 6 months, 1 year evaluations.**



Q&A