



**United
Nations**

Department of
Economic and
Social Affairs



SDG 6 Policy Support System (SDG-PSS):

Creating evidence-based policies and practices for water-related SDG success

Yujeong Kim

Senior Sustainable Development Officer,

United Nations Office for Sustainable Development (UNOSD)



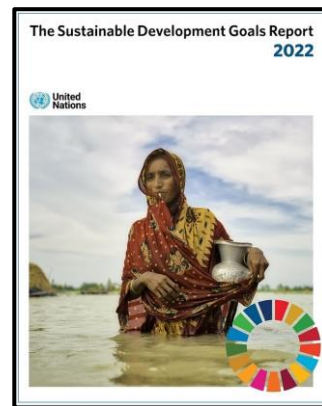
United Nations

Department of
Economic and
Social Affairs



SDG 6 Status

- The world at large is lagging in achieving SDG 6.
- Meeting drinking water, sanitation and hygiene targets by 2030 will require a fourfold increase in the pace of progress.
- The number of UN Member States with comparable data available on SDG 6 has increased from less than half to three-quarters of 193 countries.
- Significant data gaps still exist in terms of geographic coverage, and level of disaggregation.
- Implications for water-related targets embedded in other SDGs.



Source: Synthesis Report 2018 and The Sustainable Development Goals Report 2022



DESA

The United Nations Office For Sustainable Development



United Nations

Department of
Economic and
Social Affairs



Why this project “Water in the World We Want”?

- Develop interventions that work in data-limited conditions and facilitate decision making for accelerated achievement of SDG 6.
- Strengthen and realign enabling environments as a Means of Implementation (SDG 6.a, 6.b, and SDG 17) to fast-track achievement of SDG 6.
- Provide a collaboration platform to help countries improve their data analysis, reporting and progress toward achieving SDG 6 and other water-related SDG targets.



DESA

The United Nations Office For Sustainable Development



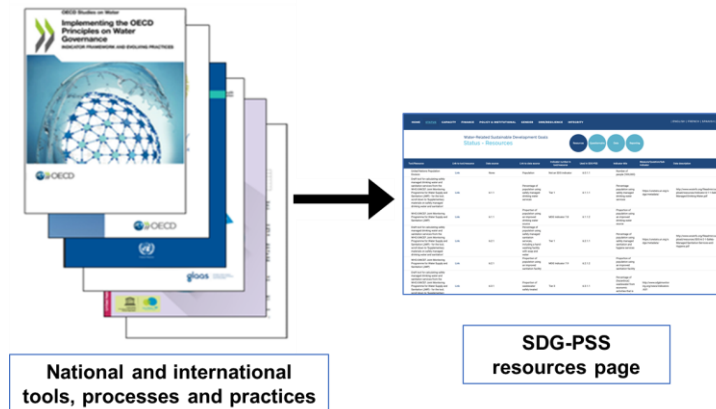
United Nations

Department of
Economic and
Social Affairs



Navigating through data-limited situations

- Developed by a multi-institutional team, the Sustainable Development Goal 6 Policy Support System (SDG-PSS)
 - ✓ Supports policy and decision making under data-limited situations.
 - ✓ Enables cross-sectorial evidence-based collaboration between experts and decision makers.



DESA

The United Nations Office For Sustainable Development



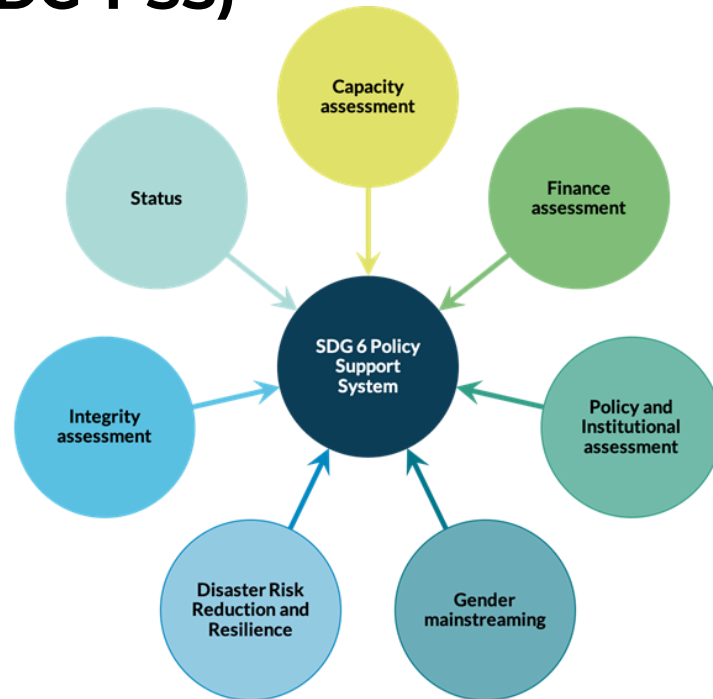
United Nations

Department of
Economic and
Social Affairs



SDG 6 Policy Support System (SDG-PSS)

- SDG-PSS is an online system (sdgpss.net) where countries can enter data, information, and trends and translate them into 'fit-for-policy' evidence.
- SDG-PSS is organized around six critical components along with a component 'Status'.
- Currently, the tool is available in English, French, Spanish, Korean, Arabic and Portuguese languages.



DESA

The United Nations Office For Sustainable Development



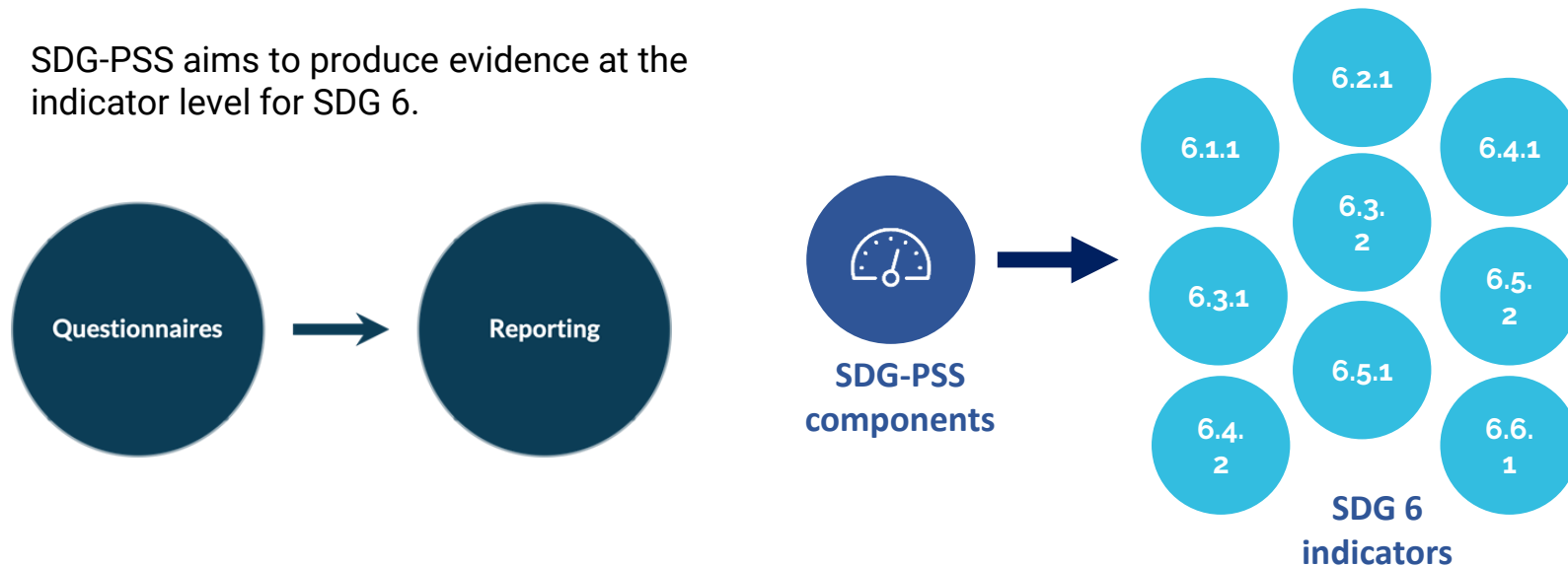
United Nations

Department of
Economic and
Social Affairs



SDG 6 Policy Support System (SDG-PSS)

- SDG-PSS aims to produce evidence at the indicator level for SDG 6.



DESA

The United Nations Office For Sustainable Development



United Nations

Department of
Economic and
Social Affairs



SDG-PSS Workflow

Data
And
information



**Water-Related Sustainable Development Goals
Capacity - Questionnaire**

The answers to this questionnaire will allow the SDG-PSS to present an overarching perspective of the critical priorities, needs and gaps concerning water-related policies. The approach and process used to answer this questionnaire may vary between countries. However, the key to answer this questionnaire is to conduct a high-level discussion and reach an agreement with different water experts involved in the collection of the data for this component.

Since SDG 6 targets and indicators cover a wide range of water-related dimensions, water experts from different agencies and institutions may answer these questions differently based on a specific SDG 6 target or indicator.

This questionnaire is organized systematically. At the bottom of the page, a button allows the user to save the answers already entered in the questionnaire.

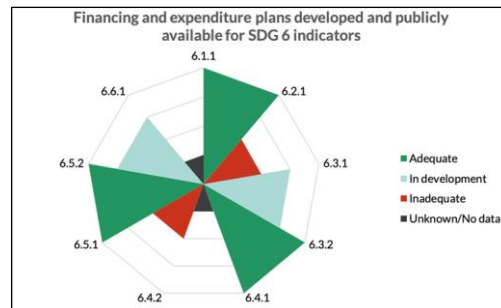
For more information and description of this component, please go to the User Guide.

Target 6.1: By 2030, achieve universal and equitable access to safe and affordable drinking water for all

Indicator 6.1.1: Proportion of population using safely managed drinking water services

Indicator 6.1.1: Proportion of population using safely managed drinking water services	Yes	No	Unknown	In Development
6.1.1.1 (Do institutions and management plans have mechanisms to address capacity building for this indicator?)	<input checked="" type="radio"/>	<input type="radio"/>	<input type="radio"/>	<input type="radio"/>
6.1.1.2 (What capacity is available at the national level to achieve the agreed aspiration for this indicator?)	<input type="radio"/>	<input checked="" type="radio"/>	<input type="radio"/>	<input type="radio"/>
6.1.1.3 (Do relevant Ministries/institutions on track to build or that capacity for implementation of policies for this indicator?)	<input type="radio"/>	<input type="radio"/>	<input checked="" type="radio"/>	<input type="radio"/>

Questionnaire



Target	Indicator	Capacity				Planes			Policy & Institutional		
		Current capacity	Identified gaps	Strengthening measures	Accountability	Resource Planning	Policy formulation	Policy implementation	Policy formulation	Policy implementation	Policy implementation
6.1	6.1.1	Inadequate	Inadequate	Inadequate	Inadequate	Inadequate	Inadequate	Inadequate	Inadequate	Inadequate	Inadequate
6.2	6.2.1	Inadequate	Inadequate	Inadequate	Inadequate	Inadequate	Inadequate	Inadequate	Inadequate	Inadequate	Inadequate
6.3	6.3.1	Inadequate	Inadequate	Inadequate	Inadequate	Inadequate	Inadequate	Inadequate	Inadequate	Inadequate	Inadequate
6.3	6.3.2	Inadequate	Inadequate	Inadequate	Inadequate	Inadequate	Inadequate	Inadequate	Inadequate	Inadequate	Inadequate
6.4	6.4.1	Inadequate	Inadequate	Inadequate	Inadequate	Inadequate	Inadequate	Inadequate	Inadequate	Inadequate	Inadequate
6.4	6.4.2	Inadequate	Inadequate	Inadequate	Inadequate	Inadequate	Inadequate	Inadequate	Inadequate	Inadequate	Inadequate
6.5	6.5.1	Inadequate	Inadequate	Inadequate	Inadequate	Inadequate	Inadequate	Inadequate	Inadequate	Inadequate	Inadequate
6.5	6.5.2	Inadequate	Inadequate	Inadequate	Inadequate	Inadequate	Inadequate	Inadequate	Inadequate	Inadequate	Inadequate

Reporting



Summary Page for Policy and Decision Making

Target			Indicator			Capacity			Finance			Policy & Institutional		
						Current capacity	Overall Progress	Strengthening mechanisms	Accountability	Financial Planning	Public Incentives	Policy Planning and Equity	Coordination & cooperation	Public awareness
6.1	By 2030, achieve universal and equitable access to safe and affordable drinking water for all	6.1.1	Proportion of population using safely managed drinking water services	Inadequate	No evidence	Adequate	In progress	In progress	In progress	Adequate	No evidence	In progress		
6.2	By 2030, achieve access to adequate and equitable sanitation and hygiene for all and end open defecation, paying special attention to the needs of women and girls and those in vulnerable situations	6.2.1	Proportion of population using safely managed sanitation services, including a hand-washing facility with soap and water	No evidence	In progress	Inadequate	No evidence	Adequate	Inadequate	Inadequate	In progress	Adequate		
6.3	By 2030, improve water quality by reducing pollution, eliminating dumping and minimizing release of hazardous chemicals and materials, halving the proportion of untreated wastewater and substantially increasing recycling and safe reuse globally	6.3.1	Proportion of wastewater safely treated	In progress	Adequate	No evidence	In progress	Inadequate	No evidence	Adequate	Adequate	Inadequate		
		6.3.2	Proportion of bodies of water with good ambient water quality	Adequate	Inadequate	In progress	Adequate	In progress	In progress	Adequate	Inadequate	No evidence		
	By 2030, substantially increase water-use efficiency across all	6.4.1	Change in water-use efficiency over time	Inadequate	No evidence	Adequate	Inadequate	Adequate	Adequate	Adequate	No evidence	In progress		



Adequate progress towards the achievement of a specific SDG 6 indicator.



Work-in-progress that needs to be maintained for a specific SDG 6 indicator.



Inadequate progress that needs attention towards achieving a specific SDG 6 indicator.



No data or information available to showcase the status of progress for a specific SDG 6 indicator.



United Nations

Department of
Economic and
Social Affairs



Hub-Country Experiences on SDG-PSS



- “SDG-PSS played a major role in building a shared understanding among local and national SDG 6 stakeholders.” – Pakistan



- “We identified critical gaps, such as the lack of gender-disaggregated data, and the government has made decisions to fill these gaps.” – Tunisia



- “The Summary View has the potential to inform decision-makers and can be used to investigate deficiencies in the databases and formulate strategies for data collection.” - Brazil



DESA

The United Nations Office For Sustainable Development

Hub-Country Experiences on SDG-PSS

[illegible]

Brazil, Latin America

[illegible]

Costa Rica, Caribbean

[illegible]

Pakistan, Asia

[illegible]

Tunisia, Africa

[illegible]

Republic of Korea, Asia

<https://inweh.unu.edu/projects/accelerating-the-implementation-of-water-related-sdgs/>



United Nations

Department of
Economic and
Social Affairs



Facilitating the use of SDG-PSS

- Self-paced e-course on SDG-PSS available online to all potential users.
- The course addresses capacity building for systematic and effective use of SDG-PSS.
- It provides training on how to use this system to produce evidence on the enabling environment for achieving SDG 6.

The SDG Policy Support System (SDG-PSS) is a tool built for water-focused professionals, practitioners, and policy makers that might be interested in producing reliable, systematic, comprehensive, and "fit-for-policy" evidence on the SDG 6, in order to address capacity building for effective use of the SDG-PSS, this e-course provides training and teaching on how to use this tool to produce evidence and data on the enabling environment of the SDG 6.

ENROLL NOW

Introduction

The SDG-PSS is a free, online and secure system developed as a part of the project "Water in the World We Want" by the United Nations University Institute for Water, Environment and Health (UNU-INWEH), the United Nations Office for Sustainable Development (UNOSD), the Korea Environment Corporation (K-eco), the Ministry of Environment, Republic of Korea, and national institutions from Costa Rica, Ghana, Pakistan, and Tunisia.

The SDG-PSS is designed for water-focused policy makers, development actors, and researchers interested in producing reliable, systematic and "fit-for-policy" evidence on the enabling environment for achieving SDG 6. It has been tested by policy makers and experts from five countries - Costa Rica, Ghana, Pakistan, Tunisia, and Republic of Korea - between 2016 and 2018.

Course Number	INWEH-03
Classes Start	Available Now
Institute	UNU-INWEH
Certificate	Yes
Language	English

<http://wlc.unu.edu/courses/course-v1:UNU-INWEH+INWEH-03+2019/about>

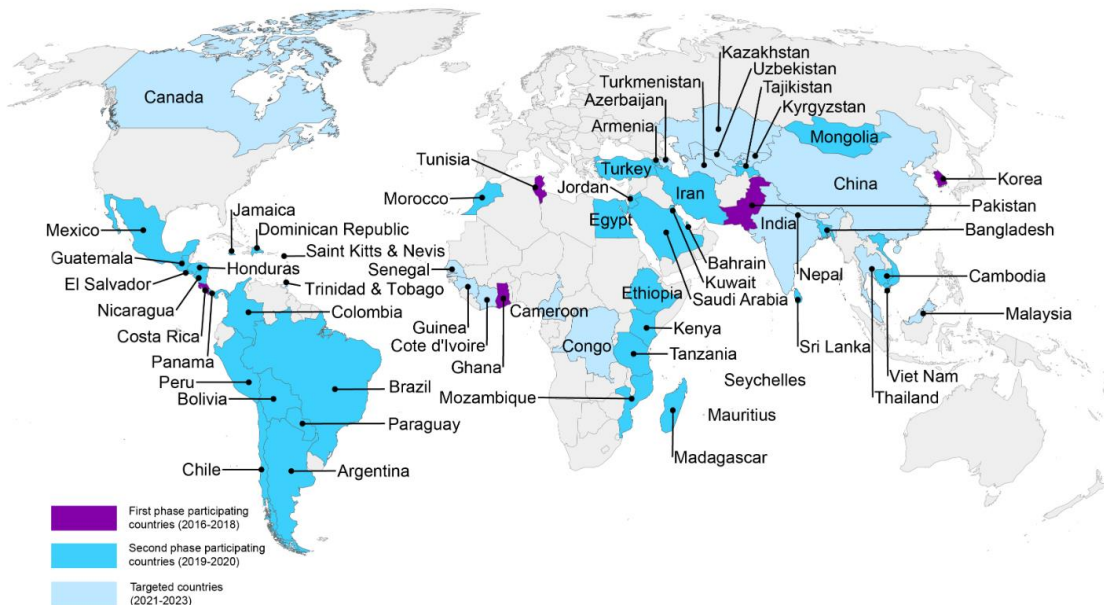


United Nations

Department of
Economic and
Social Affairs



Countries all around the world with SDG-PSS



DESA

The United Nations Office For Sustainable Development



United Nations

Department of
Economic and
Social Affairs



Workshops and Events

- Regional Workshops
 - Africa and the Middle East
 - Asia
 - Latin America and the Caribbean
- Final Workshop
- Sessions in International Events



DESA

The United Nations Office For Sustainable Development



United Nations

Department of
Economic and
Social Affairs



2022 SDG-PSS Asia Regional Workshop

- **Date:** 23-24 November 2022 (During KIWW 2022)
 - * KIWW: Korea International Water Week
- **Venue:** EXCO, Daegu, Republic of Korea
- **Organizer:** UNOSD, UNU-INWEH, K-water, UNESCO i-WSSM
- **Participants:** About 30 policymakers and government officials from 13 countries in Asia regions
- **Objective:** Promote SDG-PSS to more Asian countries for the achievement of water-related SDGs in the region



EXCO, Daegu, Republic of Korea



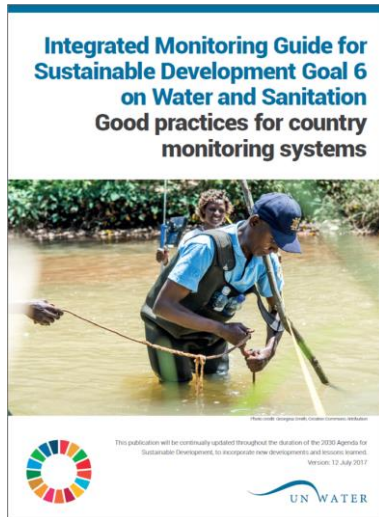


United Nations

Department of
Economic and
Social Affairs



SDG-PSS in key references and news



La Universidad de la ONU lanza una herramienta online para alcanzar la meta de agua limpia y saneamiento para todos

lunes 25 marzo 2019 100

La lucha sobre la que informan muchos países para diseñar planes efectivos para alcanzar los Objetivos de Desarrollo Sostenible (ODS) de Naciones Unidas ha inspirado una nueva herramienta digital de la Universidad de Naciones Unidas para guiar a esas naciones en un camino de seis pasos hacia el crítico ODS 6: **agua limpia y saneamiento para todos**.



03-23-2019

World Water Day: New online tool helps countries achieve clean water goal

By **Chrisey Sexton**
Earth.com staff writer

Today, March 22nd, is World Water Day, and it serves as an important reminder of how many people on Earth do not have access to clean and **safe drinking water**. The **United Nations** (UN) first launched World Water Day in 1993, and now say that as many as 2.1 billion people do not have safe water in their home.



United Nations

Department of
Economic and
Social Affairs



Summing up

- SDG-PSS gives a precise view of the data that is missing and guides in gathering and analyzing the relevant data, information, and trends.
- If data/information available, the tool helps understand the status of progress on SDG 6 at the indicator level.
- The tool provides a platform for cooperation within water research community in a joint policy development process.
- SDG-PSS is a powerful knowledge sharing platform for learning between countries.
- The tool is available for use in multiple languages.
- It can be modified per needs of other SDGs.



DESA

The United Nations Office For Sustainable Development

SDG 6 Policy Support System (SDG-PSS)

The SDG-PSS is designed as part of the project 'Water in the World We Want' to enable water experts, researchers, and government actors to collaborate and produce national-level evidence on the enabling environment to achieve SDG 6.


[Register](#)
[Sign In](#)

Thank you

yujeong.kim@un.org



Thank you.