



COTE D'IVOIRE



USING SDG 6 POLICY SUPPORT SYSTEM



KOUAKOU Serge-Stéphane from Ministry of Forests and Water



PLAN



- I. Overall status of SDG 6 at the national level**
- II. National agencies involved in SDG 6 achievement**
- III. Most important SDG 6 target(s) and indicator(s)**
- IV. Reflections on SDG-PSS and its online course**
- V. SDG-PSS Summary Page**



PLAN



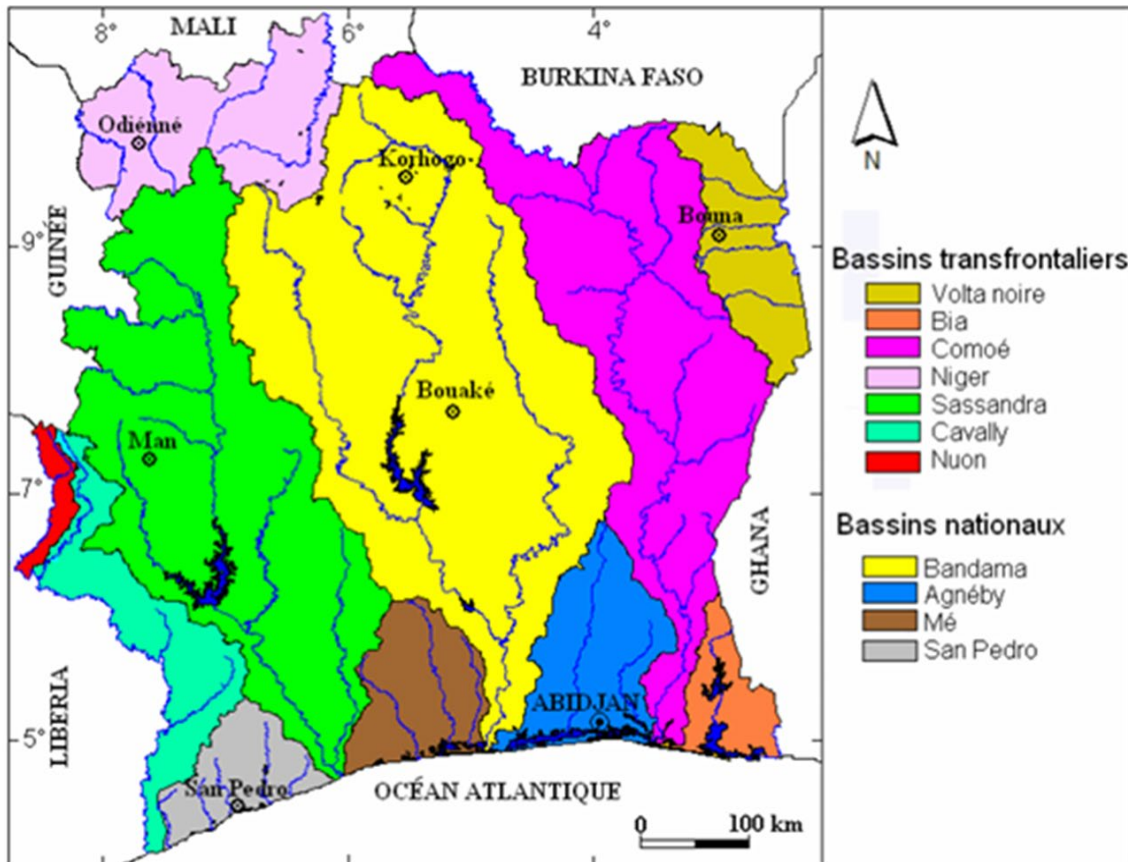
I. OVERALL STATUS OF SDG 6 AT THE NATIONAL LEVEL



OVERALL STATUS OF SDG 6 AT THE NATIONAL LEVEL



In Côte d'Ivoire, surface waters are plentiful. There are 4 national watersheds (Agnéby, Bandama, Mé, San Pedro) and 7 transboundary river basins (Bia, Cavally, Comoé, Niger, Nuon, Sassandra, Volta Noire).





OVERALL STATUS OF SDG 6 AT THE NATIONAL LEVEL



Only 03 of the indicators can be regularly collected :

- ✓ **Indicator 6.1.1** Proportion of population using safely managed drinking water services
- ✓ **Indicator 6.2.1** Proportion of population using safely managed sanitation services, including a hand-washing facility with soap and water
- ✓ **Indicator 6.a.1** Amount of official development assistance spent on water and sanitation in a government-coordinated spending plan





OVERALL STATUS OF SDG 6 AT THE NATIONAL LEVEL



The main Challenges :

- Operationalization of an Integrated Water Resources Management framework (GIRE)
- Strengthening access to drinking water sources in rural areas : 71% in 2022;
- Strengthening improved sanitation system in rural areas
- restoration and expansion of wastewater disposal network and the treatment of wastewater



We think about over 90% of the people living in Côte d'Ivoire will benefit if we achieve SDG6.



PLAN



II. NATIONAL AGENCIES INVOLVED IN SDG 6 ACHIEVEMENT



NATIONAL AGENCIES INVOLVED IN SDG 6 ACHIEVEMENT



Target	Indicator	Ministries
6.1	6.1.1	Ministry of Hydraulics and Sanitation
6.2	6.2.1	Ministry of Hydraulics and Sanitation
6.3	6.3.1	<ul style="list-style-type: none">• Ministry of Hydraulics and Sanitation• Ministry of Trade, Industry and Promotion of SMEs
	6.3.2	<ul style="list-style-type: none">• Ministry of Water and Forests• Ministry of Environment and Sustainable Development• CIAPOL
6.4	6.4.1	<ul style="list-style-type: none">• Ministry of Water and Forests• State Ministry, Ministry of Agriculture and Rural Development• Ministry of Mines, Oil and Energy• Ministry of Hydraulics and Sanitation• Ministry of Mines, Oil and Energy
	6.4.2	Ministry of Water and Forests
6.5	6.5.1	Ministry of Water and Forests
	6.5.2	Ministry of Water and Forests
6.6	6.6.1	Ministry of Water and Forests
6.a	6.a.1	Ministry of the Budget and of the State Portfolio
6.b	6.b.1	



Ministries and national agencies involved in data collect

• **Ministries**

- Ministry of Plan and Development
- Ministry of Health, Public Hygiene and Universal Health Insurance
- Ministry of National Education and Literacy
- Ministry of Economy and Finance
- Ministry of Construction, Housing and Urban Development

• **Any other relevant organizations**

- Africa Water Association
- AMCOW

• **National organizations**

- National Sanitation and Drainage Office (ONAD)
- Airport, Aeronautics and Meteorology Operation and Development Company (SODEXAM)
- Water Distribution Company of Côte d'Ivoire (SODECI)
- Ivorian Electricity Company (CIE)
- Ocean Research Center (CRO)
- National Civil Protection Office (ONPC)
- National Institute of Statistics (INS)



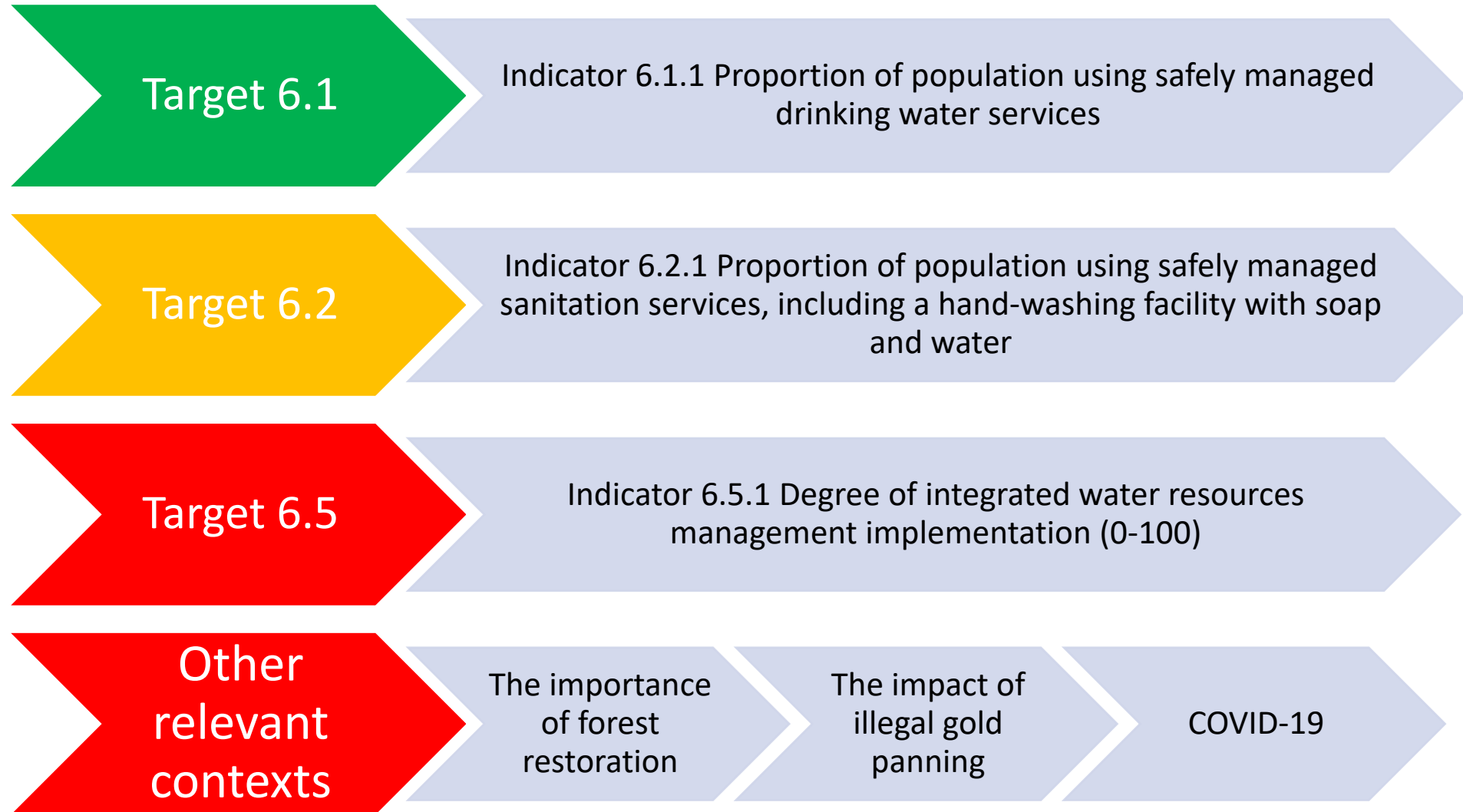
PLAN



III. MOST IMPORTANT SDG 6 TARGET(S) AND INDICATOR(S)



MOST IMPORTANT SDG 6 TARGET(S) AND INDICATOR(S)





PLAN



IV. REFLECTIONS ON SDG- PSS AND ITS ONLINE COURSE



REFLECTIONS ON SDG-PSS AND ITS ONLINE COURSE



- Data entry :
 - Don't have / uncollected data
 - Difference between data in the tool
- Importance of courses
 - Understand the use of the tool
 - Generate a report with all the information
 - work with other contributors at the same time



RELEVANCE OF SDG-PSS COMPONENTS



- All component are essentials
 - Some of them must be improved to allow users to give more flexibility : components
 - courses could give information about methodology of use to fill in the component tool

THANKS