

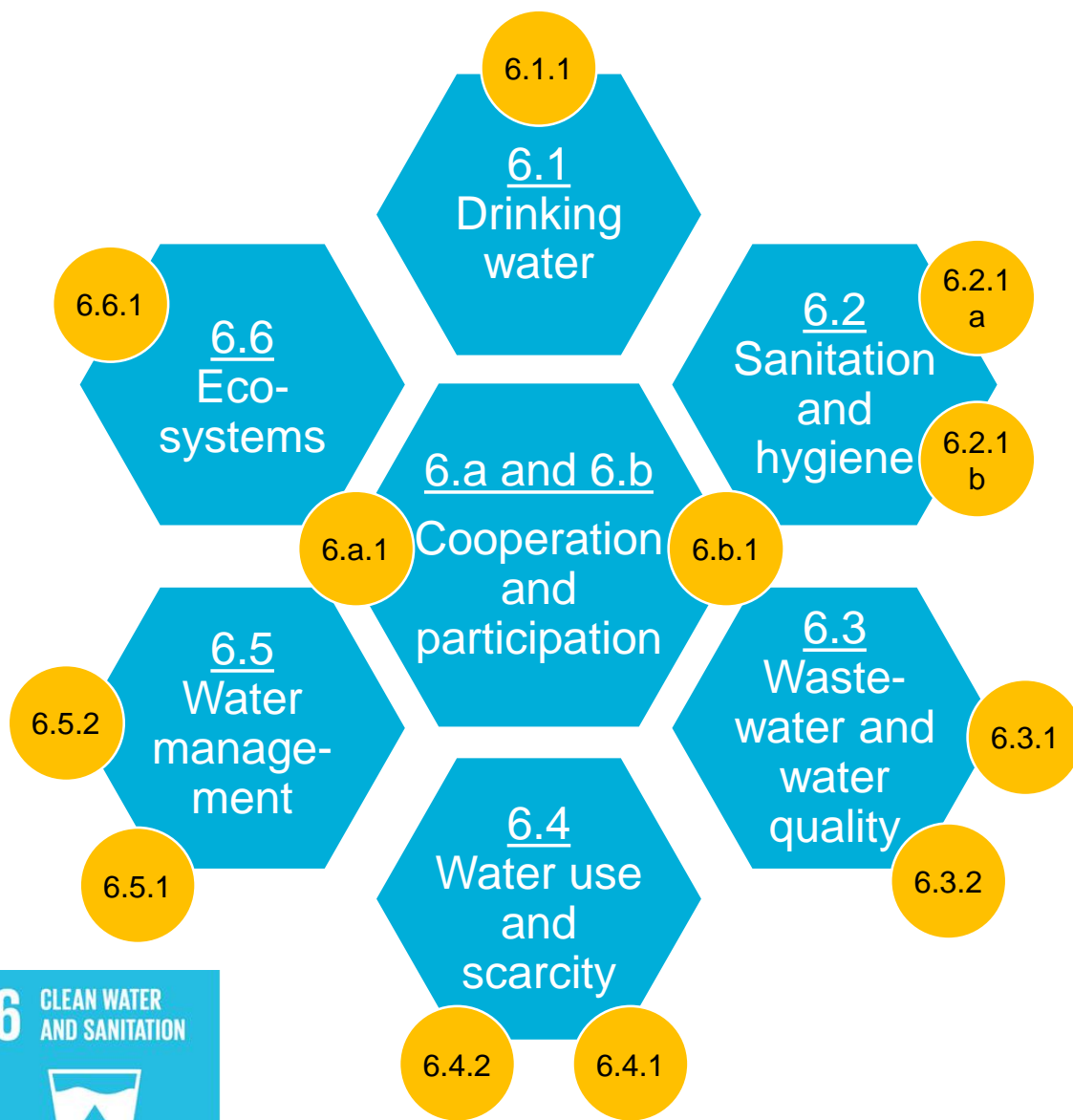


Integrated Monitoring Initiative for SDG 6

Integrated Monitoring of SDG 6

SDG-PSS workshop for Africa and Middle East
3-4 July 2019, Tunis

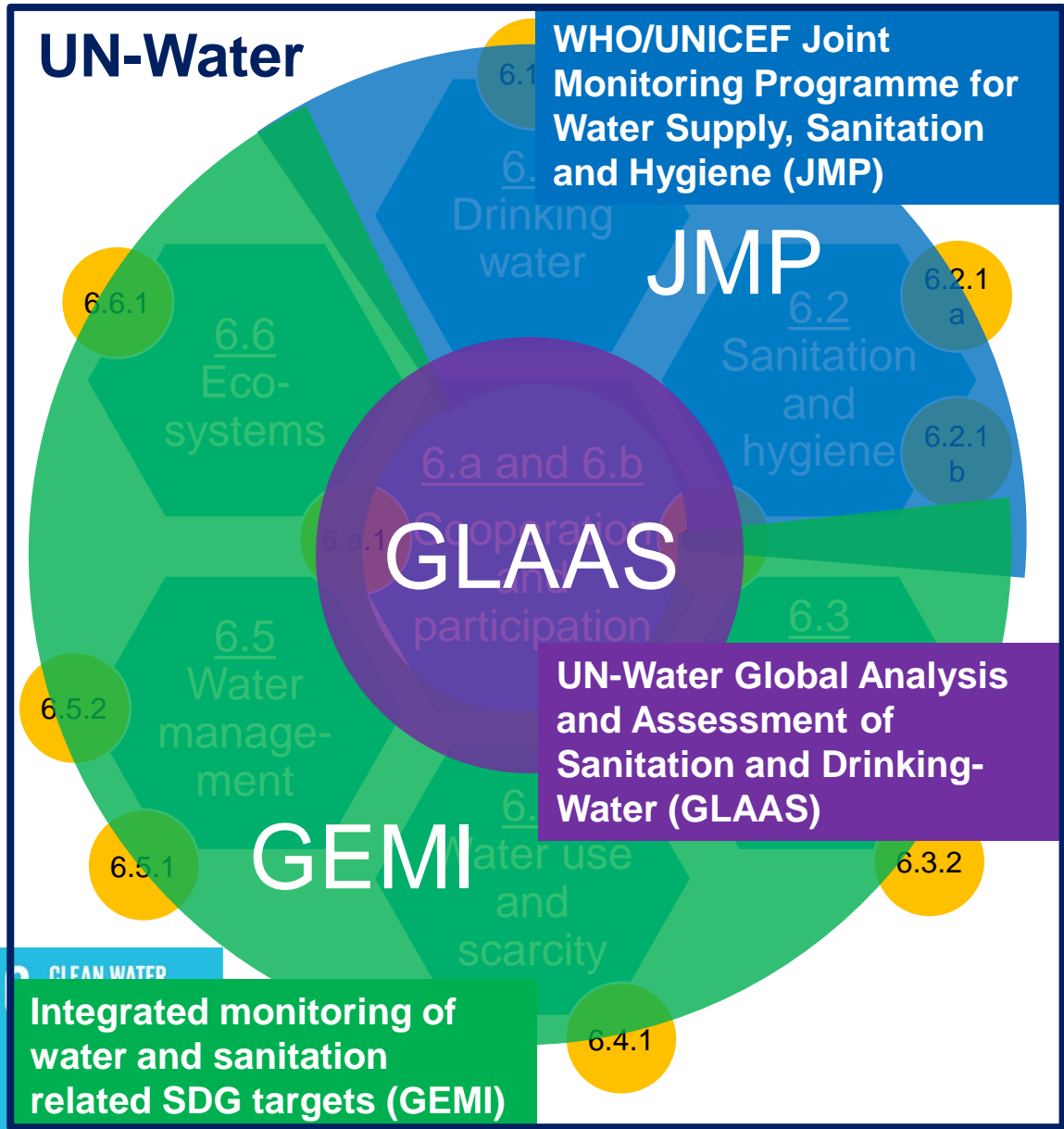
SDG 6 global indicators



6.1.1	Safely managed drinking water services (WHO, UNICEF)**
6.2.1	Safely managed sanitation services and hygiene (WHO, UNICEF)**
6.3.1	Wastewater safely treated (WHO, UN-Habitat, UNSD)**
6.3.2	Good ambient water quality (UNEP)**
6.4.1	Water use efficiency (FAO)**
6.4.2	Level of water stress (FAO)*
6.5.1	Integrated water resources management (UNEP)*
6.5.2	Transboundary basin area with water cooperation (UNECE, UNESCO)*
6.6.1	Water-related ecosystems (UNEP)*
6.a.1	Water- and sanitation-related official development assistance (WHO, OECD)*
6.b.1	Participation of local communities in water and sanitation management (WHO, OECD)*



Integrated Monitoring Initiative



6.1.1	Safely managed drinking water services (WHO, UNICEF)
6.2.1	Safely managed sanitation services and hygiene (WHO, UNICEF)
6.3.1	Wastewater safely treated (WHO, UN-Habitat, UNSD)
6.3.2	Good ambient water quality (UNEP)
6.4.1	Water use efficiency (FAO)
6.4.2	Level of water stress (FAO)
6.5.1	Integrated water resources management (UNEP)
6.5.2	Transboundary basin area with water cooperation (UNECE, UNESCO)
6.6.1	Water-related ecosystems (UNEP)
6.a.1	Water- and sanitation-related official development assistance (WHO, OECD)
6.b.1	Participation of local communities in water and sanitation management (WHO, OECD)

Purpose and approach 2015-2030



Goal: Acceleration of the achievement of SDG 6 on water and sanitation through evidence based policies, regulations, planning and investments

Purpose: By 2030, increased availability and holistic analysis of high quality data contributes to better informed water and sanitation policy, regulation, planning and investment at all levels

1. Global
baseline
2015-2018

2. Build national
ownership
2019-2022

3. Integrate and
mainstream
2023-2026

4. Consolidate
and sustain
2027-2030

Objectives



1. Countries collect, analyse and report SDG 6 data

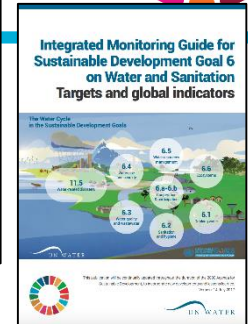
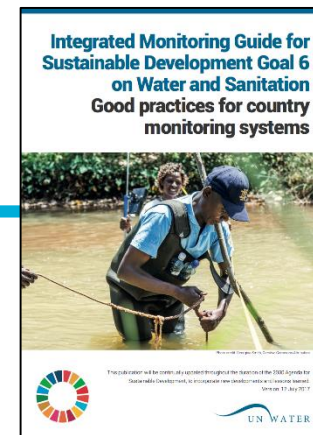
- Maintain **monitoring framework** for SDG 6 global indicators
- **Technical support to countries** to collect, analyse, report and use water and sanitation data
- Compile country data and **report on global progress** towards SDG 6

2. Policy- and decision-makers at all levels use SDG 6 data

- **Institutional support to countries** on cross-cutting issues and integration
- **Inform policy- and decision-makers** on SDG 6 status and interlinkages
- **Coordinate** global monitoring and reporting



Phase 1 (2015-2018)

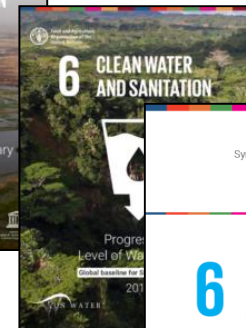
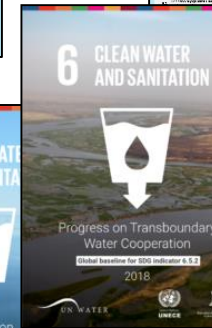
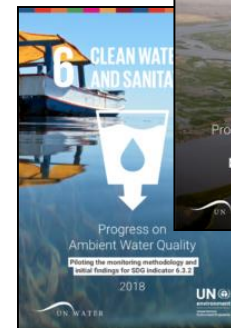


2015
Methodology development

2016
Methodology pilot testing,
expert review and revision

2017
Global implementation,
integrated baseline process

2018
Baseline reporting, SDG 6
synthesis reporting



6 CLEAN WATER AND SANITATION



UN WATER

Integrated Monitoring Initiative for SDG 6

Phase 2 (2019-2022)



2019

Methodology refinement
and capacity building

2020

Global data drive, validation
and capacity building

2021

Validation, analysis and
progress reporting

2022

Input to high-level processes

Key external events

- Data requests from UNSD
 - Every year
- High-level Political Forum (HLPF)
 - Every year
 - Next in-depth review of SDG 6?
- One-day high-level meeting of the President of the General Assembly
 - New York in 2021
- Preparatory process Midterm Comprehensive Review of International Decade for Action (2018-2028)
 - Regional and global meetings, 2022
- United Nations Conference on the Midterm Comprehensive Review of International Decade for Action
 - New York, World Water Day 2023

Support to countries



Indicator-specific

- Step-by-step methodologies
- Helpdesk including phone calls
- Webinars and e-learning tools
- Workshops
- Country meetings and visiting experts
- Outreach through meetings

Cross-cutting and institutional

- Coordination of focal points
- Good practices
- Helpdesk including phone calls
- Webinars and country case studies
- Workshops, communities of practice
- Process facilitation support
- Outreach through meetings



All information available at
www.sdg6monitoring.org

Data for decision-making across sectors



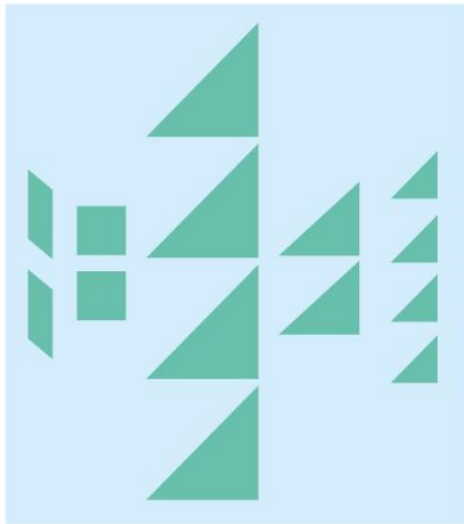
- Ensure coherent policies and planning, informed decision-making – integrated management
 - Assess and analyse the potential consequences of different development paths
 - Information often collected by different ministries, institutions, municipalities, utilities, national statistical office
-
- Need to integrate hydrological, environmental, social and economic information for an overall picture

SDG 6 Data Portal

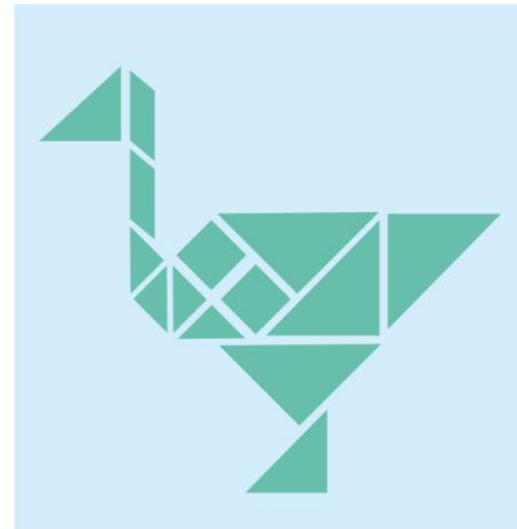


- Gathers data on all SDG 6 global indicators + other key social, economic and environmental indicators
 - Offers tailored options for visualization and analysis
-
- Track overall progress towards SDG 6 at global, regional and national levels
 - Enable an integrated assessment and analysis of the state of water resources, including linkages to other sectors
 - Raise awareness on the importance of water and sanitation and catalyze action
 - Encourage and improve SDG 6 monitoring and reporting
 - Provide an entry point to the wealth of water and sanitation information available within the UN system

SDG 6 Data Portal



SECTORAL DATA

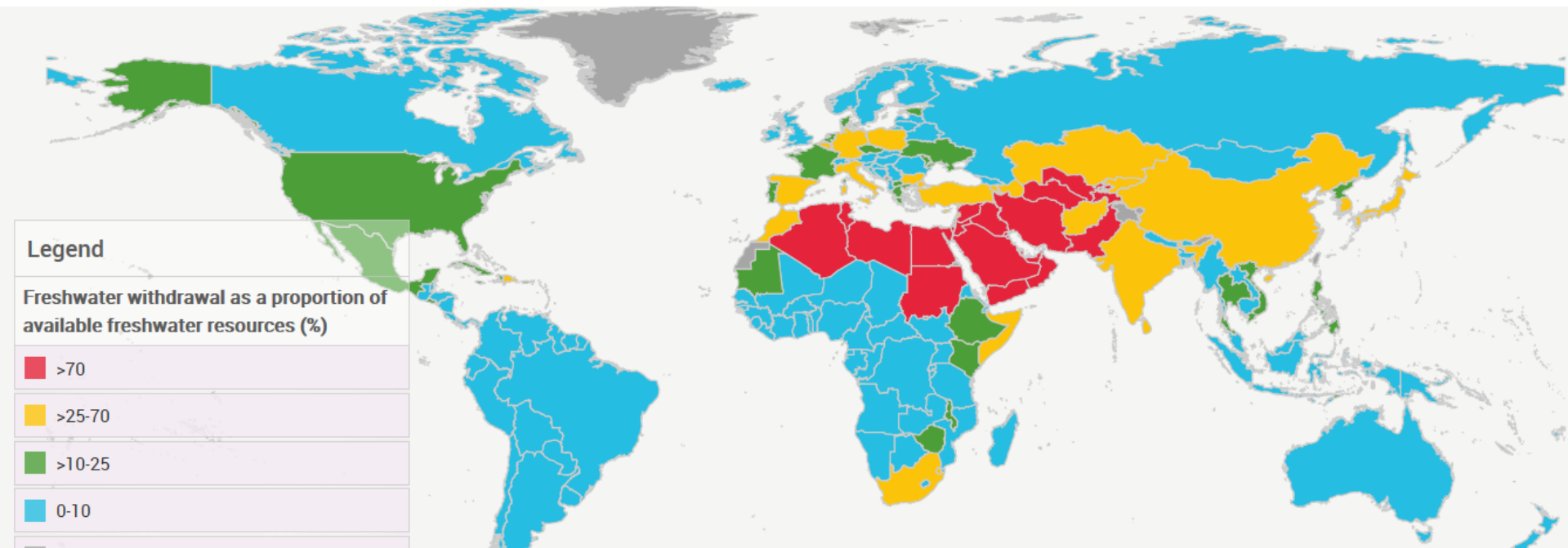


INTEGRATED INFORMATION

Maps



6.4.2 Level of water stress: freshwater withdrawal as a proportion of available freshwater resources > Overall (%)



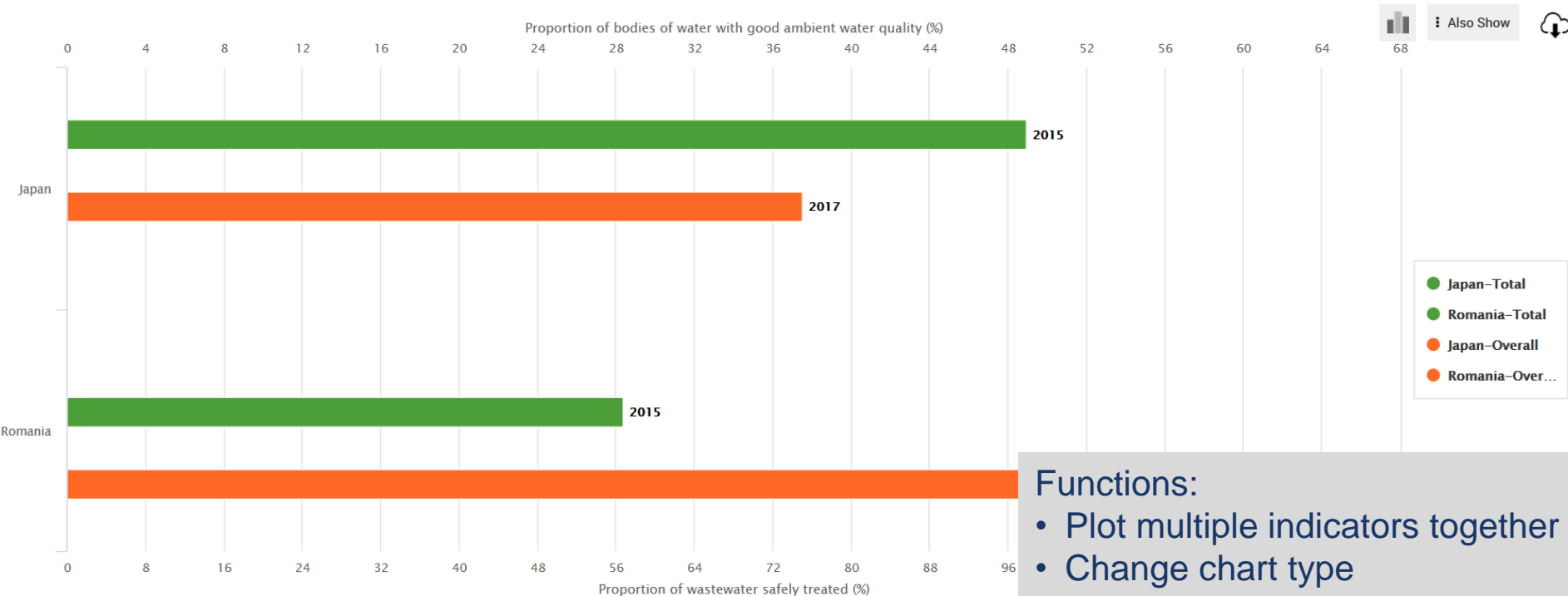
Functions:

- Change map type (simple, satellite, physical and water basin)
- Change map colour and unit
- Select year, select latest year with data available or play video with progress over time
- Download map

Charts



6.3.1 Proportion of wastewater safely treated (%) > Household > Total ✕ 6.3.2 Proportion of bodies of water with good ambient water quality (%) > Overall ✕ Country > Japan ✕ Country > Romania ✕ type here..



Functions:

- Plot multiple indicators together
- Change chart type
- Change chart colours and units
- Also show similar/max/min/regional values
- Select year, select latest year with data available and play video with progress over time
- Download chart

List of all indicators displayed in the above chart :

- 6.3.1 Proportion of wastewater safely treated (%) > Household > Total-Japan
- 6.3.1 Proportion of wastewater safely treated (%) > Household > Total-Romania
- 6.3.2 Proportion of bodies of water with good ambient water quality (%) > Overall-Japan
- 6.3.2 Proportion of bodies of water with good ambient water quality (%) > Overall-Romania

Tables

[Home](#)[Snapshots](#)[Maps](#)[Charts](#)[Tables](#)[Data lab](#)[About](#)[World > World](#) ✕[6.5.2 Proportion of transboundary basin area with an operational arrangement for water cooperation \(%\)](#) ✕[6.5.2 Proportion of transboundary basin area with an operational arrangement for water cooperation \(%\) > Overall](#) ✕☒ Show all columns

Highlight values above a benchmark value:

[Submit](#)[Reset](#)

Indicator	SeriesCode	SeriesDescri...	GeoAreaType	GeoAreaNa...	TimePeriod	Value	Time_Detail	Source	FootNote
6.5.2	EG_TBA_H2CO	Percentage of transboundary area with an operational arrangement for water cooperation within a country	World	World	2017	59.02	-	UNECE, UNESCO	Global estimation on data from 195 countries
6.5.2	EG_TBA_H2CORL	Percentage of transboundary river and lake basin area with an operational arrangement for water cooperation within a country	World	World	2017	63.51	-	UNECE, UNESCO	Global estimation on data from 195 countries
		Percentage of transboundary aquifer							



Page

1

of 1



25

items per page

1 - 3 of 3 items



Functions:

- Plot multiple indicators together
- Show simple and detailed metadata
- Filter results and define benchmark value
- Download all indicators on harmonized format



Functions: Identify countries that meet a set of user-defined criteria, and its associated population and land area

- Set criteria for multiple spatial scales and indicators
- List countries on map and in table format
- Download results

Criterion 1

6.5.1 Degree of integrated water resources management implementation (0-100) (%)>Overall

Overall

Result range(data value)



Criterion 2

6.6.1 Change in the extent of water-related ecosystems over time>Spatial extent of water-related ecosystems from earth observation data>Lakes, rivers, estuaries and artificial water bodies, change in extent from baseline reference 2001-2005 (%)


Lakes, rivers, estuaries and artificial water...

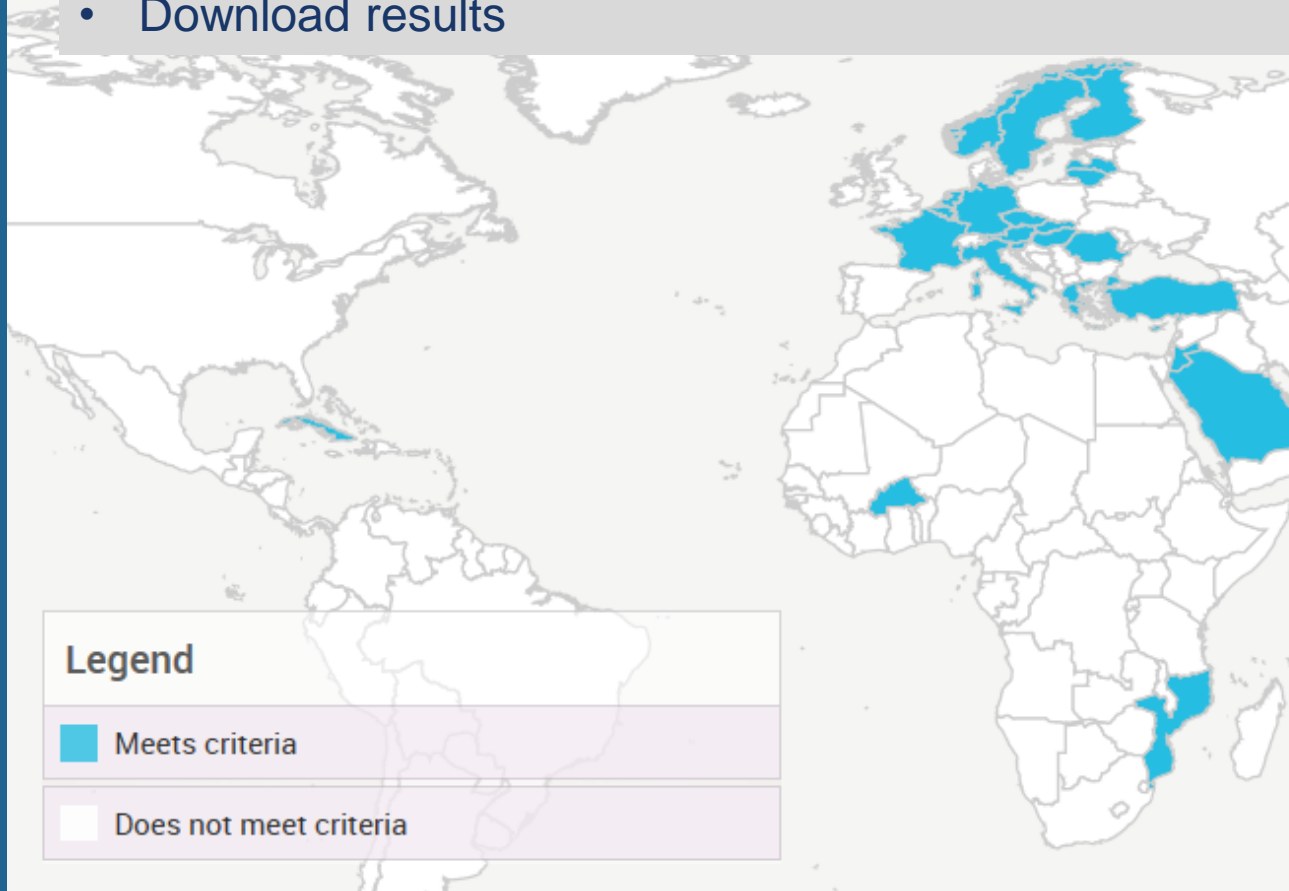
Result range(data value)



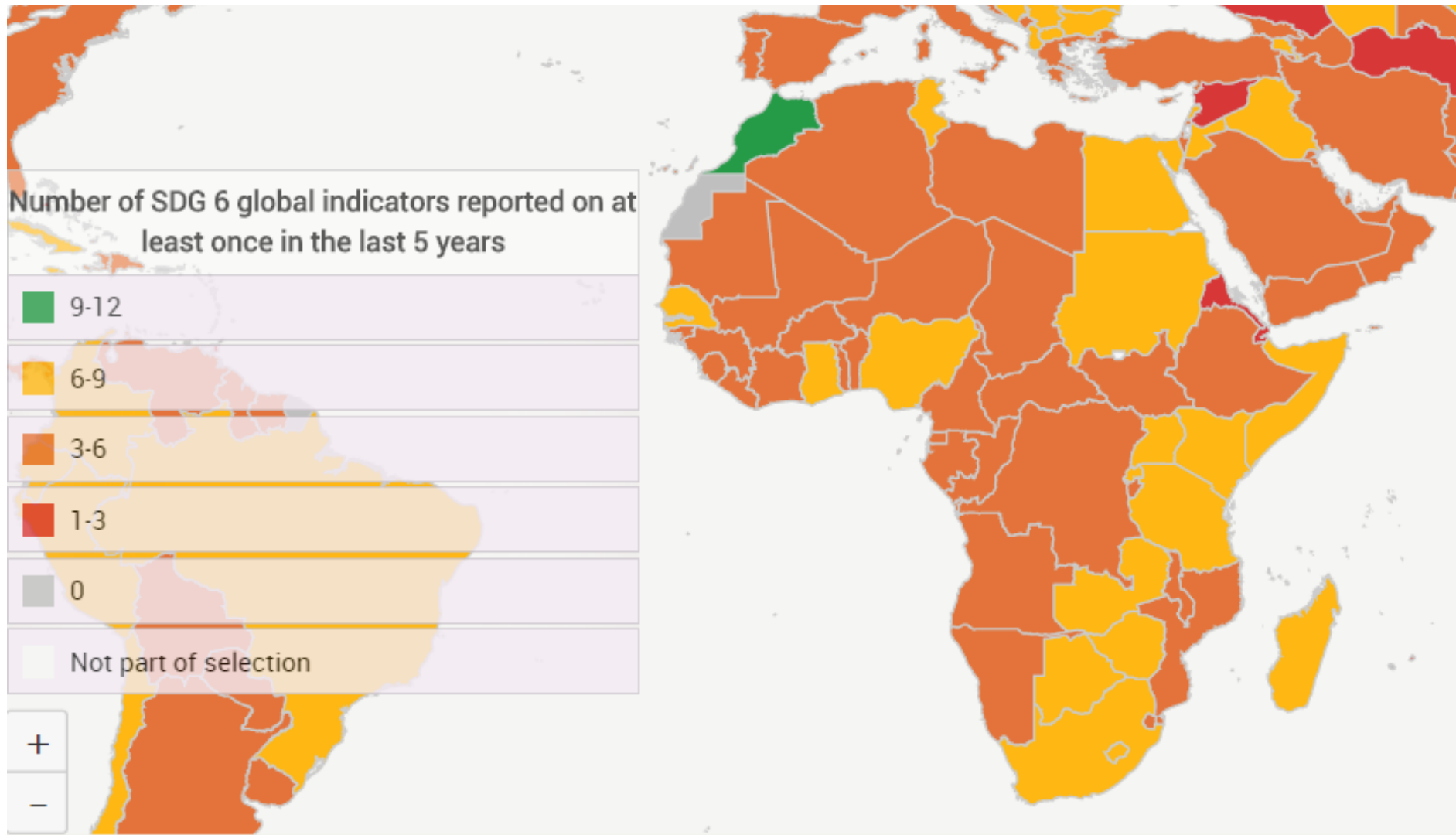
Legend

 Meets criteria

 Does not meet criteria



Data availability in Africa & Middle East



SDG 6 POLICY SUPPORT SYSTEM

- SDG-PSS is an online system where countries can enter data and translate it into “fit-for-policy” evidence.
- The system allows **tracking the enabling environment** of SDG 6.
- The main outcome of the system is an **evidence framework** at **indicator level** of SDG 6.
- Countries can aim to collect better data, to create more evidence and to work on the critical data that is missing.





Integrated Monitoring Initiative for SDG 6

Thank you

www.sdg6monitoring.org