



metrovancouver | METRO 2050

Integrated Planning For A Metropolitan Region

LAND USE, TRANSPORTATION AND CLIMATE PLANNING

Jonathan Côté

Chair, Mayors Council, TransLink and Chair, Regional Planning Committee, Metro Vancouver,
Mayor of New Westminster



metrovancouver

metrovanouver

23 MEMBER JURISDICTIONS



POPULATION: **2.7** MILLION

53% OF THE POPULATION
OF BC



61% OF BC GDP

1.29 MILLION JOBS



WE'RE A GROWING REGION



2020

2.75 million

2050

3.8 million



1.1 million

1.6 million



1.4 million

1.9 million

WHY PLAN FOR THE LONG TERM, TOGETHER?



- Coordinate across municipal boundaries
- Protect what we value
- Support infrastructure planning (utilities, transit)
- Cost efficiencies
- Implement Climate Actions

CLIMATE CHANGE IN METRO VANCOUVER

Recent climate-related extreme weather events:

- Heat waves (e.g. June 2021, linked to 740 excess deaths in BC)
- Degraded air quality (wildfire smoke and ground-level ozone)
- Atmospheric rivers causing catastrophic flooding and landslides



COORDINATED PLANNING IN THE REGION



REGIONAL GROWTH STRATEGY

- Regional federation's long-term vision for collaboratively managing anticipated growth to the region in a way that reflects the federation's values
- Adopted by all member jurisdictions, adjacent regions, TransLink and MVRD Board in 2011
- Currently updating Metro 2040 to Metro 2050



An aerial photograph of the Metro Vancouver region, showing the city of Vancouver, its surrounding suburbs, and the surrounding mountains and water bodies. The map is used as a background for the text.

metrovancouver | METRO 2050

GOAL
1

Create a Compact Urban Area

GOAL
2

Support a Sustainable Economy

GOAL
3

Protect the Environment and Respond to
Climate Change and Natural Hazards

GOAL
4

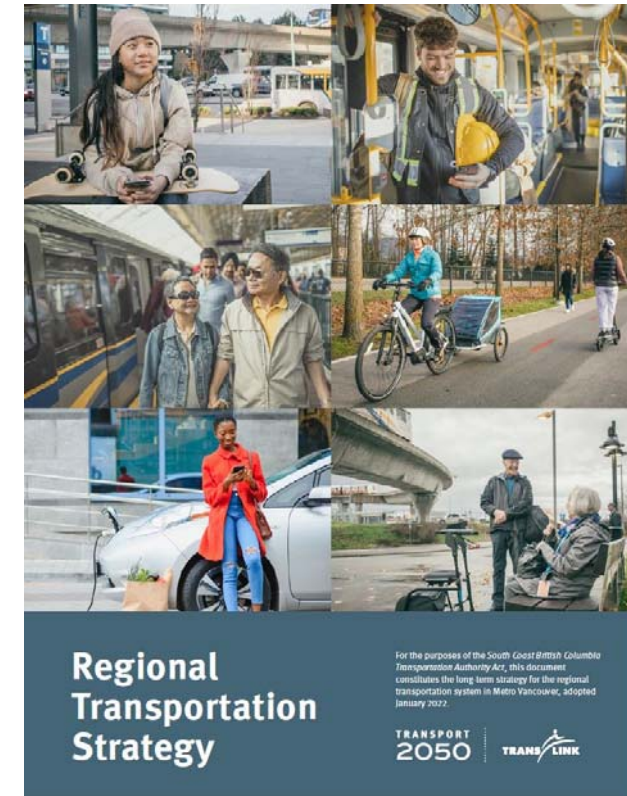
Provide Diverse and Affordable Housing Choices

GOAL
5

Support Sustainable Transportation Choices

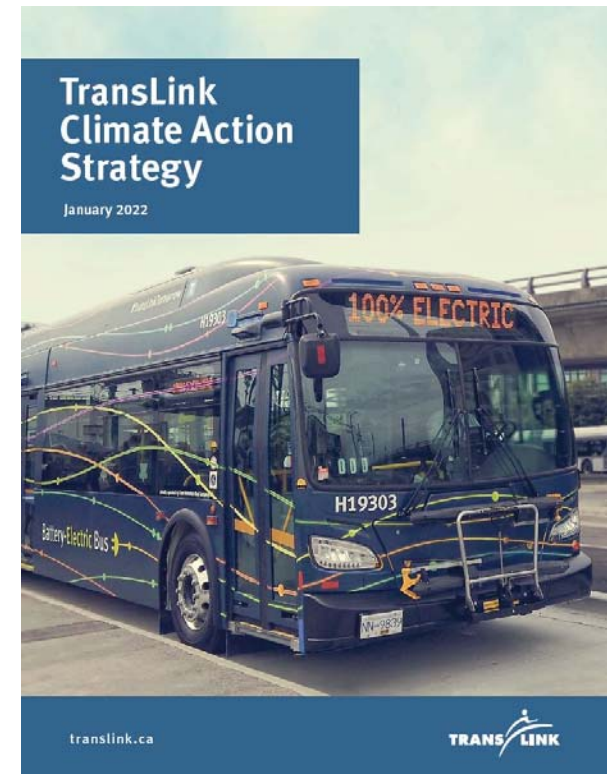
TRANSPORT 2050 GOALS

1. Convenient Choices for Everyone
2. Reliable Choices for Everyone
3. Affordable Choices for Everyone
4. Safe and Comfortable Choices for Everyone
5. Carbon Free Choices for Everyone



TRANSLINK CLIMATE ACTION STRATEGY

- Net zero GHGs by 2050
- Zero emissions from our bus fleet by 2040
- 45% reduction of GHGs by 2030 (over 2010 levels)
- To create a more resilient system that can better withstand climate impacts, that is safe and comfortable in extreme weather



CLIMATE 2050

Metro Vancouver demonstrates bold leadership in responding to climate change:

- **Carbon neutral region** by 2050
 - 45% reduction in greenhouse gases by 2030
- Infrastructure, ecosystems and communities are **resilient** to the impacts of climate change



CLIMATE 2050 ISSUE AREA ROADMAPS



METRO 2050 - BIG MOVES

- Stronger alignment of locations for growth and transit investment
‘Major Transit Growth Corridors’
- Target- 15% of new and redeveloped housing in centres and along transit be **affordable rental housing**
- Encourage **transit oriented affordable housing**, increase stock and protect non-market rental units
- Stronger protection for **Industrial lands**; flexibility for residential near rapid transit stations
- Stronger **climate action**; collective actions to meet GHG targets and prepare for impacts
- Targets- Protect 50% of **land for nature** and Achieve 40% **tree canopy cover** within the Urban Containment Boundary

TRANSPORT 2050 - BIG MOVES

- Support **walkable, complete, affordable communities**
- **People-first streets**
- Complete networks of **traffic-protected bikeways**
- Deliver **frequent, local transit** service within a 5 minute walk
- Support **fast, reliable transit** service
- Prioritize the **movement of transit on roads**
- **Expand shared mobility** options
- Change our vehicles and **how we fuel them**
- Use the **power of digital tools**
- Commit to **universal basic mobility** based on the ability to pay

CLIMATE 2050 - BIG MOVES

All personal travel is made by active transportation or using zero emission technologies

- Enhance & improve regional transit
- Expand active transportation networks
- Accelerate sales targets for electric vehicles
- More stringent low carbon fuel standards

All buildings are zero emissions from heating / cooling

- GHG performance requirements for existing buildings
- New buildings are highly efficient and electric
- Require GHG reductions during renovations



BUILDING A STRONGER REGION

- Reduce transportation emissions through containing and structuring growth
- Protect natural areas by focusing growth in Centres and Transit Corridors
- Align growth with infrastructure investments
- Build more resilient neighbourhoods through natural hazard identification and protection of sensitive ecological areas
- Increase tree canopy coverage to promote walkable, healthy communities and reduce the heat island effect



New Westminster

Questions?

45011775

metrovancouver