



United Nations

Department of
Economic and
Social Affairs

2021-22 International Mayors Forum

24-27 January 2022
8-10:30 pm (Seoul)
6-8:30 am (New York)



unosd.un.org/events/2021-22-international-mayors-forum

Sustainable Mobility: New Policy Approaches

Dr. Nancy Vandycke

Manager, SuM4All Program, World Bank

Why do we need a new approach for public decision-making in transport?

Hyper Digitalization

[illegible]



 REGULATIONS

 REQUIREMENTS

COMPLIANCE

 POLICIES

 STANDARDS

 RULES

BELONGING

INCLUSION

DIVERSITY

EQUITY

IDENTITY

**What is this new approach for public
decision-making in transport?**

Transport as a System



Connect all people,
including women and
communities to
economic and social
opportunities



Optimize the
predictability,
reliability and the cost
effectiveness of
mobility system



Drastically reduce
fatalities, injuries
and crashes



Minimize the
environmental
footprint of mobility
(GHG emissions, noise
and air pollution)

System subject to risks and threats

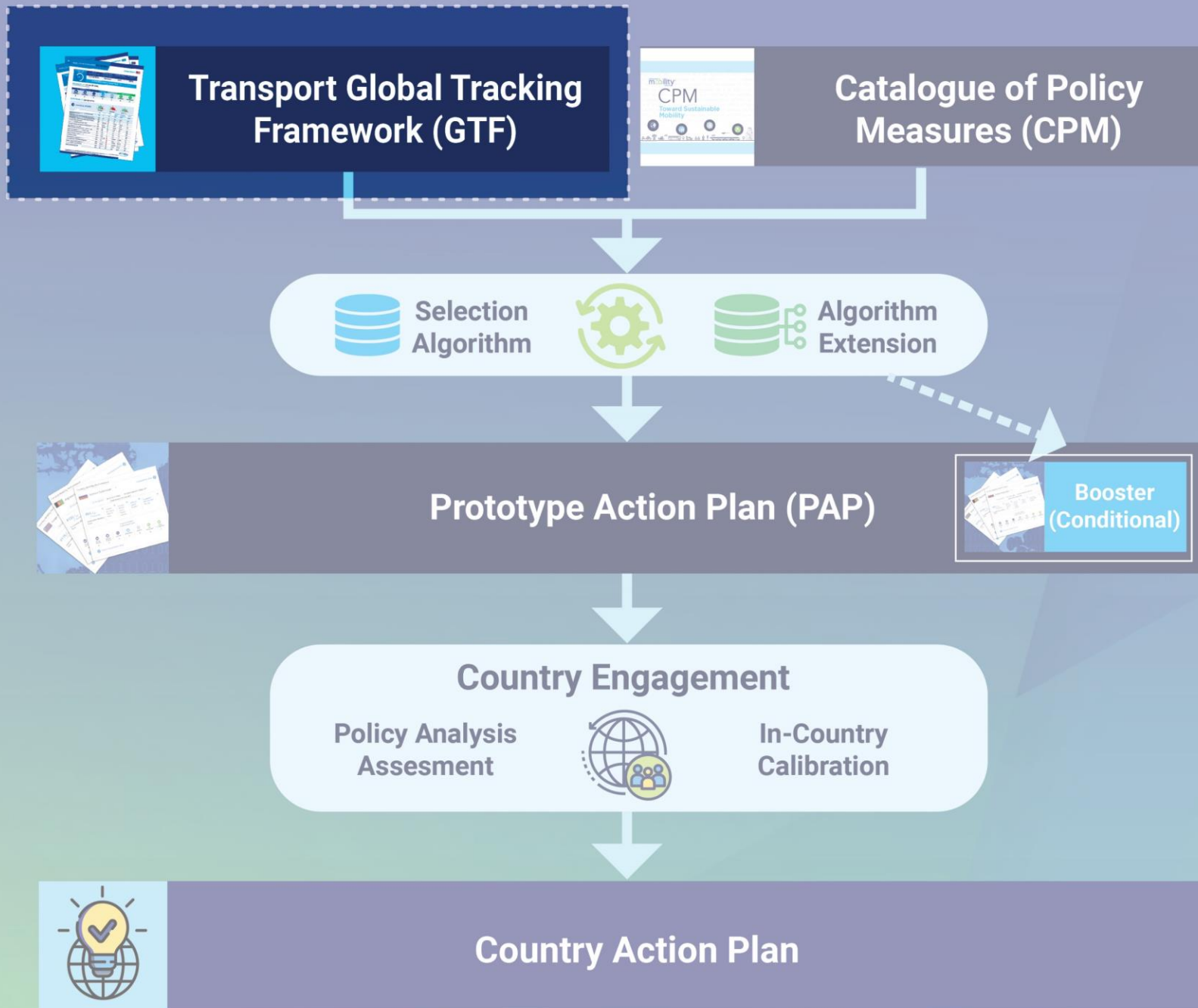


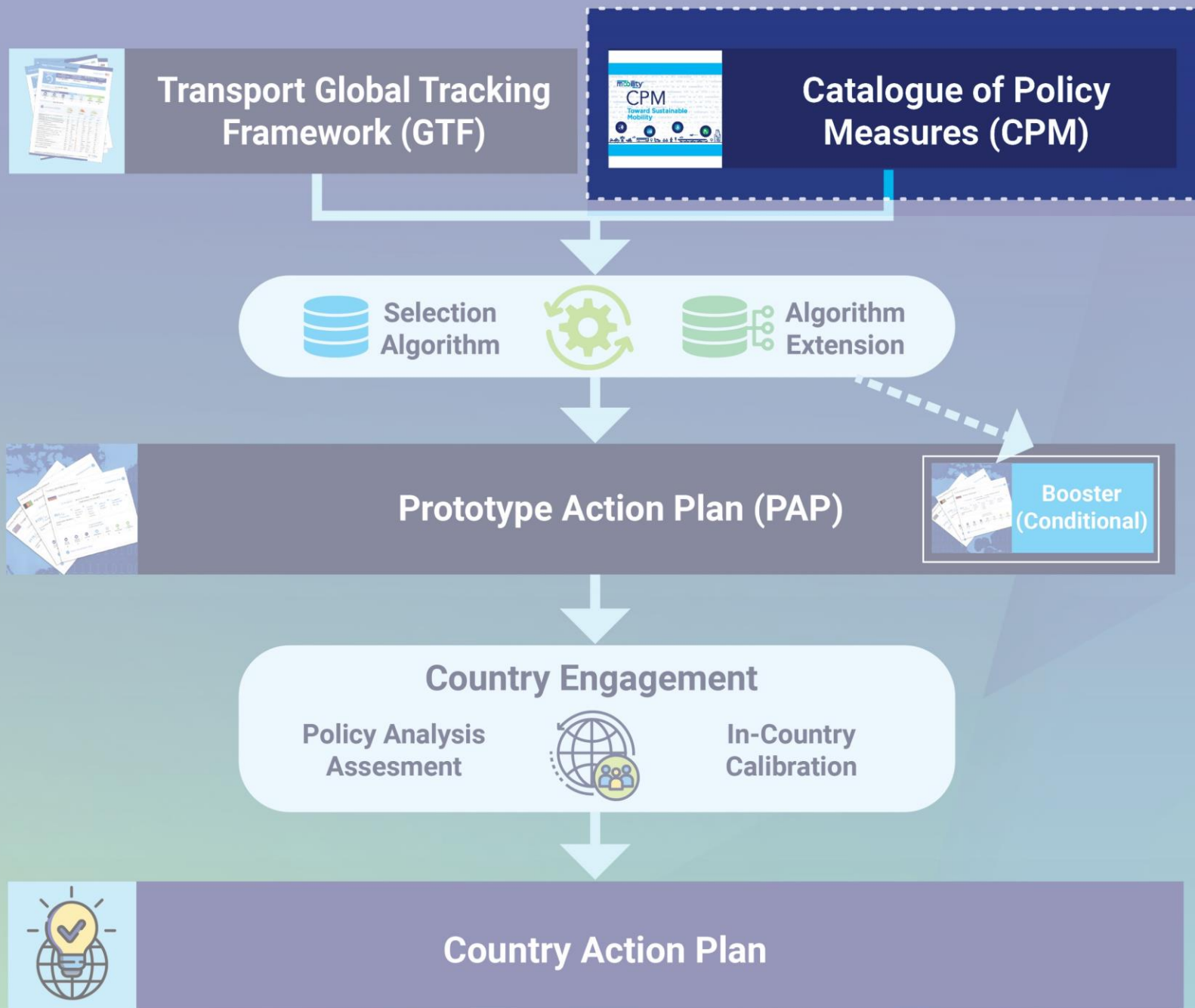
GLOBAL
PANDEMIC

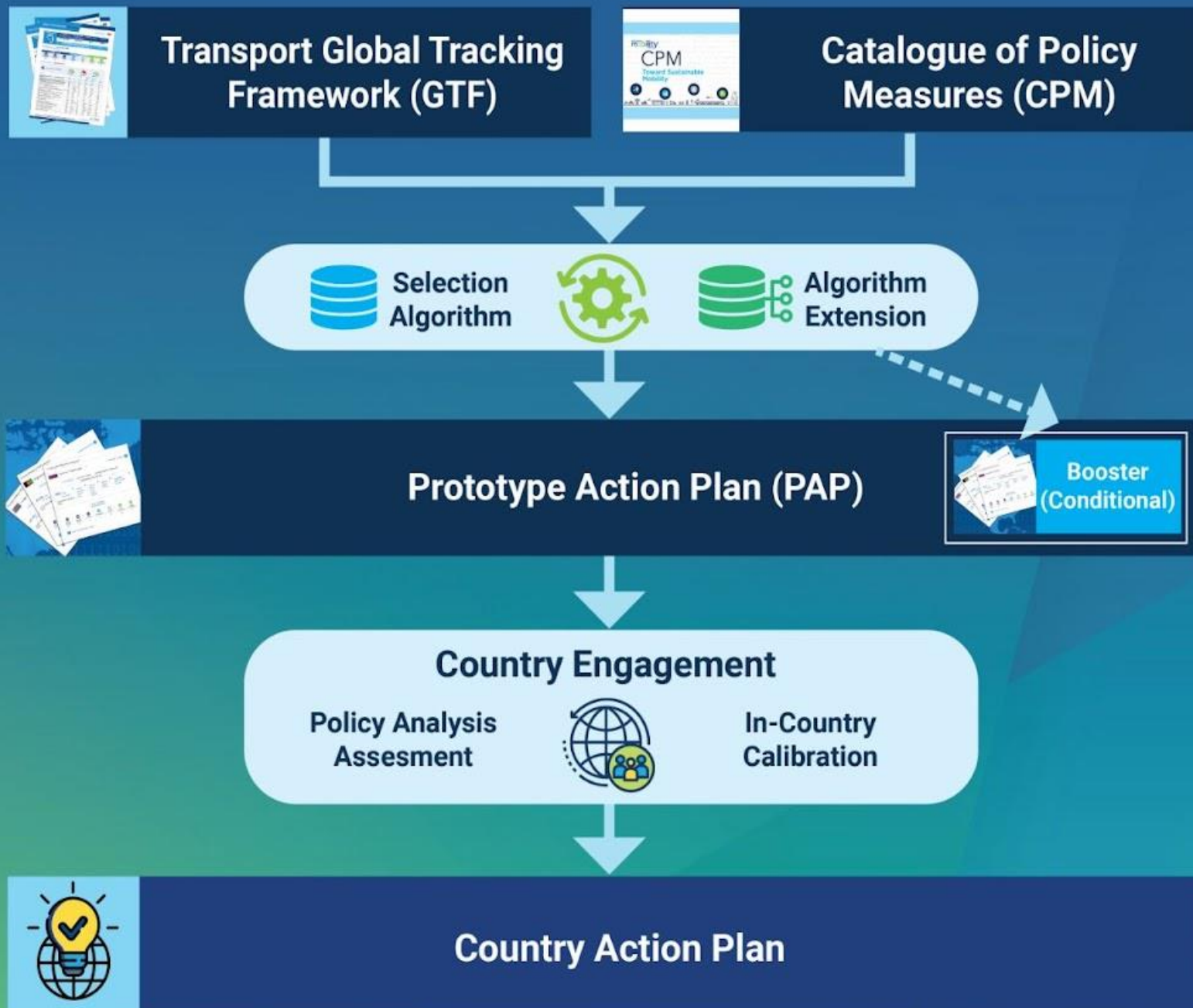


23094832	23355647	94643456	48355551	23094832	46478126	55280457	50845634
98564875	65861111	48916498	11001018	98564875	17823156	56788832	32535466
56732149	87484647	68456343	64578956	56732149	73213321	13321672	89355644
0-932476	81261782	25354668	87776886	0-932476	67223154	23154312	57577658
98345656	31115673	93556476	65478516	98345656	31221453	21453201	61111874
00874768	21332167	58647869	55844551	00874768	20113156	18831565	84647812
55647016	22315431	68866874	61494643	55647016	54345874	43577458	61743122
89355647	22145321	84610478	45648964	89355647	98645789	74986457	14532131
65864786	31500065	12617823	98684563	65864786	56877768	74457458	50006565
96880006	65434587	15673213	43253546	96880006	86065478	89568777	43458749
68748464	498					654	86421315
78126178	156					744	65434587
23156732	874					149	49886845
13321672	789					564	63432535
23154312	768					860	46689355
21453201	78516558	47851655	15673213	21453201	53546689	84563432	64765864
13156543	44551614	84455161	32110672	13156543	35564765	53546689	78696886
45874986	94643456	49464345	64564868	45874986	86111187	35564457	68748461
45789568	48916498	64896498	57875867	45789568	48464781	57765861	04781261
77768860	68456343	68456343	88944334	77768860	26178231	11187484	78231567
65478516	25354668	25354668	21010011	65478516	11567321	64781261	32133216
55844551	93556476	93556476	56456475	55844551	33216722	78231115	72213156
06149464	58647869	58647869	61249765	06149464	31543122	67321332	54345874
34564896	68866874	68866874	91093485	34564896	14532131	16727231	98645789
49860845	84610478	84647812	39201010	49860845	50006565	54312214	56877768
63432535	12617823	61782315	10048924	63432535	43458749	53213150	86654785

SYSTEM FAILURE

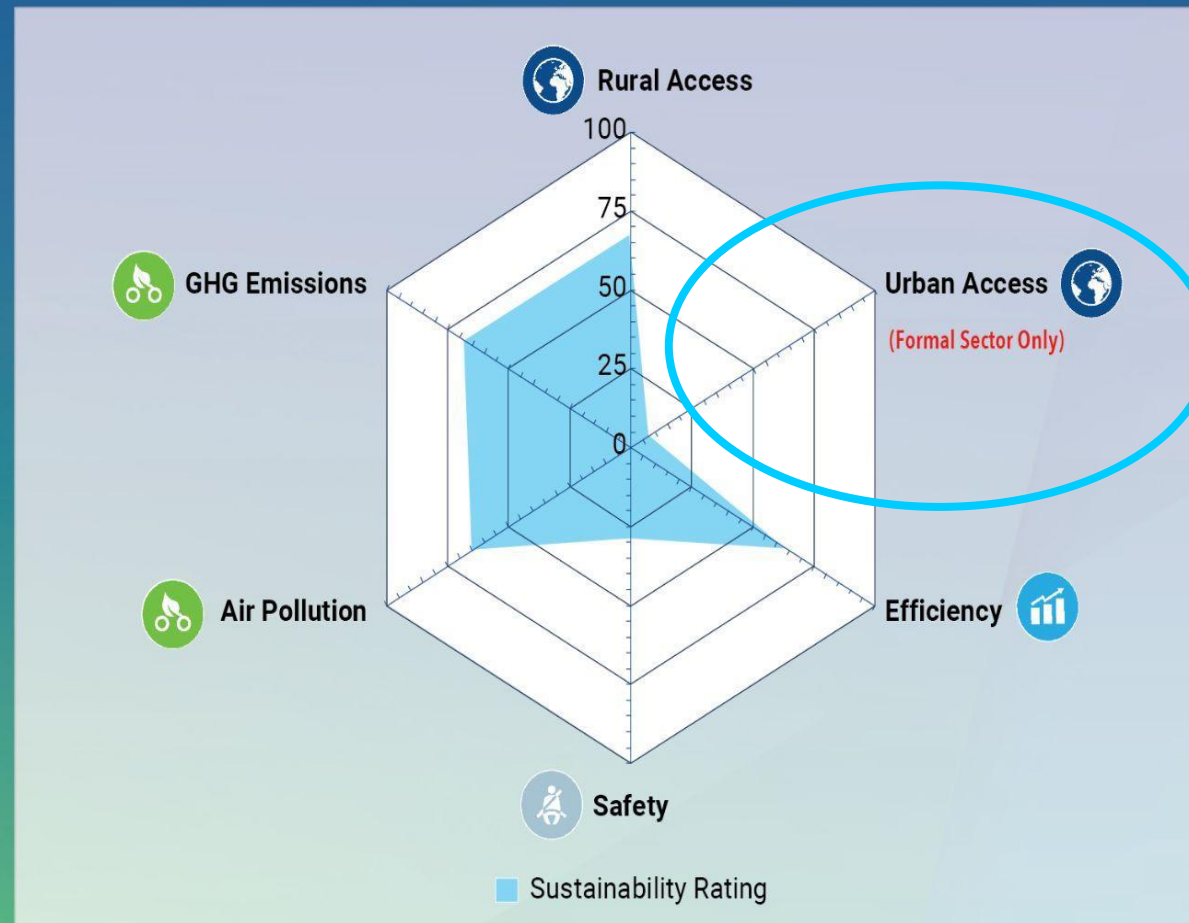






How can this approach benefit country and city decision-makers?

South Africa Sustainable Mobility Rating by Policy Goal (Global benchmark, best performing country in the world=100)



South Africa's Action Plan towards Sustainable Mobility

**31 most impactful
Policies and
Investments to improve
sustainability
performances of
country's transport
system**



Some components of the CAC

Improve the quality and safety of public transportation

Implement Anti-harassment Campaigns in Public Transport.

Adopt Sanitary Protocols and Reduce Crowding in Passenger Transport.

Make Public Transport Fares Affordable for the Poor (as Applied to Both Public Transit and Privately Operated Taxi Fleets).

Expand Public Transport Infrastructure.

Set Design Standards for Sidewalks and Bicycle Paths (to Facilitate Adding Sidewalks and Paths as Standard Parts of Road Upgrades).

AN INNOVATIVE POLICY APPROACH FOR SUSTAINABLE MOBILITY

FEBRUARY 17, 2022
9:45AM-10:45AM (EST)

SUSTAINABLE
mobility
FOR ALL

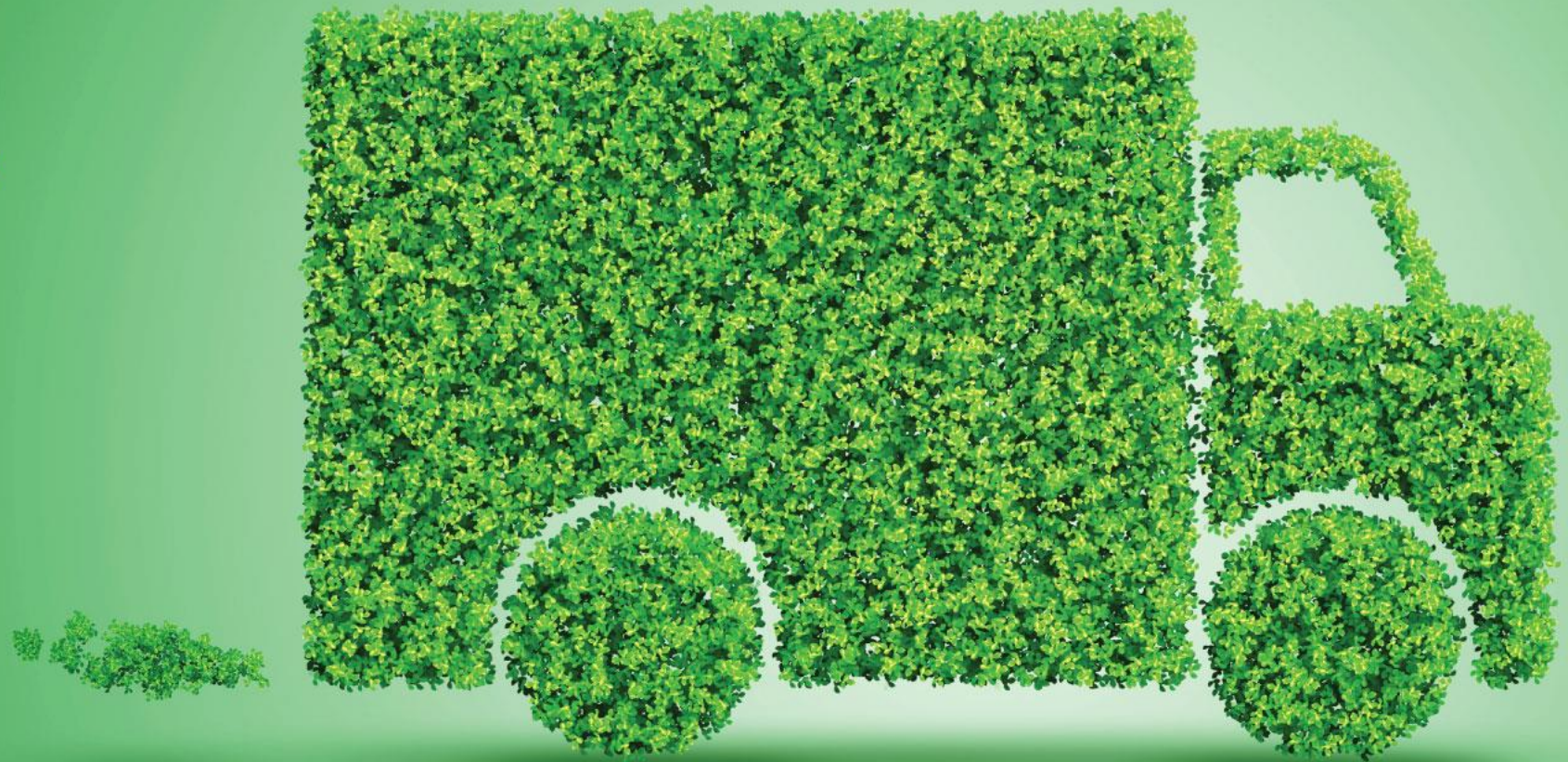


WORLD BANK GROUP



WORLD
RESOURCES
INSTITUTE | ROSS
CENTER

TRANSFORMING >>>
TRANSPORTATION™





sum4all@worldbank.org



www.sum4all.org/



[#SuM4All](https://twitter.com/SuM4All)



Sustainable Mobility for All (SuM4All)