



Local Governments  
for Sustainability

EAST ASIA

# Enhancing Urban Resilience Through An Integrated Approach

**Shu ZHU**

Regional Director, ICLEI East Asia Secretariat

Jan 2022





# ICLEI-Local Governments for Sustainability

## Global Sustainable Development through Local Actions

ICLEI—Local Governments for Sustainability is a global network of more than 2,500 local and regional governments committed to sustainable urban development. Active in 125+ countries, we influence sustainability policy and drive local action for low emission, nature-based, equitable, resilient and circular development.



**ICLEI Global Leaders stand ready to drive Sustainable Urban Development Worldwide**  
2018.06-19-22 | Montréal, Canada

# ICLEI Pathways

The Five ICLEI Pathways are designed to create systemic change. The pathways are a framework for designing integrated solutions that balance the patterns of human life and the built and natural environments.



**LOW EMISSION  
DEVELOPMENT**



**NATURE-BASED  
DEVELOPMENT**



**EQUITABLE AND  
PEOPLE-CENTERED  
DEVELOPMENT**



**RESILIENT  
DEVELOPMENT**



**CIRCULAR  
DEVELOPMENT**

They are a basis for sustainable urban development that considers the complexity of urban systems. The pathways encourage **HOLISTIC THINKING** to ensure that ICLEI optimizes our impact.





**Why urban resilience?**



An aerial photograph of a busy city intersection, likely in Japan, showing a massive crowd of pedestrians crossing a wide street with multiple zebra crossings. The scene is filled with people, cars, buses, and taxis, illustrating high urban density. A large yellow rectangular box is superimposed over the upper portion of the image, containing text.

**More and more people are packed in cities  
Cities are vulnerable and prone to multiple risks**





Earthquake



Flood



Drought



Sandstorm



Landslide

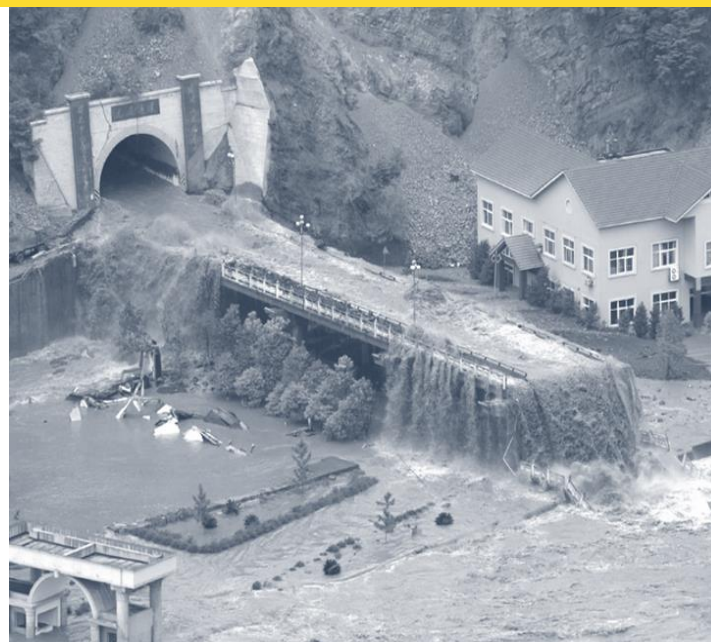


Typhoon





## CRITICAL INFRASTRUCTURE IS PRONE TO RISKS







Logistics Breakdown



Power Outage



Emergency Services Blocked





**COVID-19**



An aerial photograph showing a vast, dense urban landscape. The image is filled with a multitude of high-rise buildings, their facades creating a complex pattern of light and shadow. The perspective is from a high altitude, looking down on the city, which stretches out to the horizon. The buildings are packed closely together, illustrating the scale and density of modern urban development.

**We are growing cities.  
But we are also increasing the  
urban risk.**

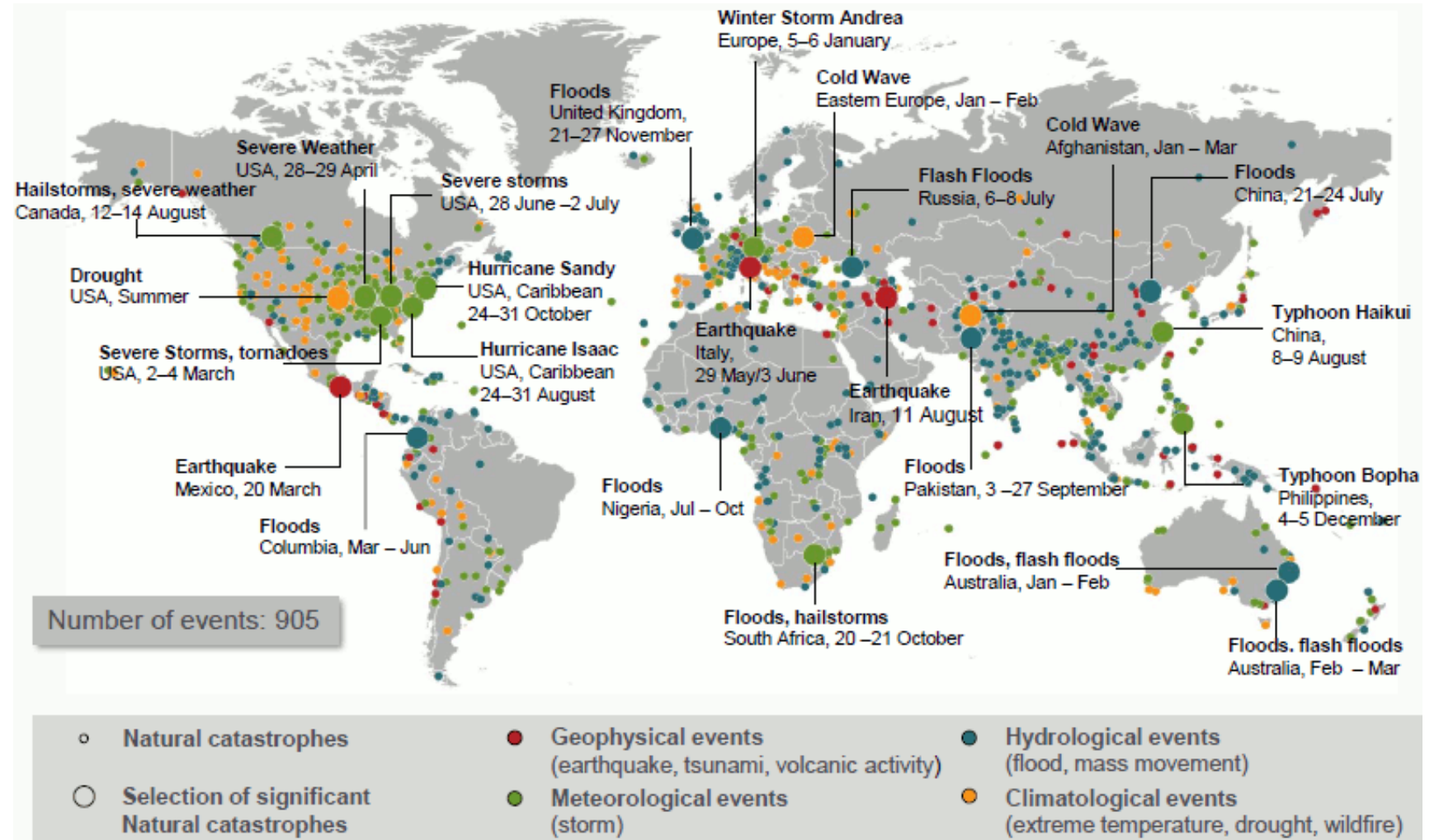


**The greenest eco-city, the most efficient industrial park, the best social services, the highest local GDP are of no value if the city is not resilient..**





# Hazards and Catastrophes







**What is Resilience?**





# Resilience & Sustainable Development

## RESILIENCE

is the capacity and ability of a community/city to withstand stress, survive, adapt, bounce back from a crisis or disaster and rapidly move on.

## RESILIENCE DEVELOPMENT

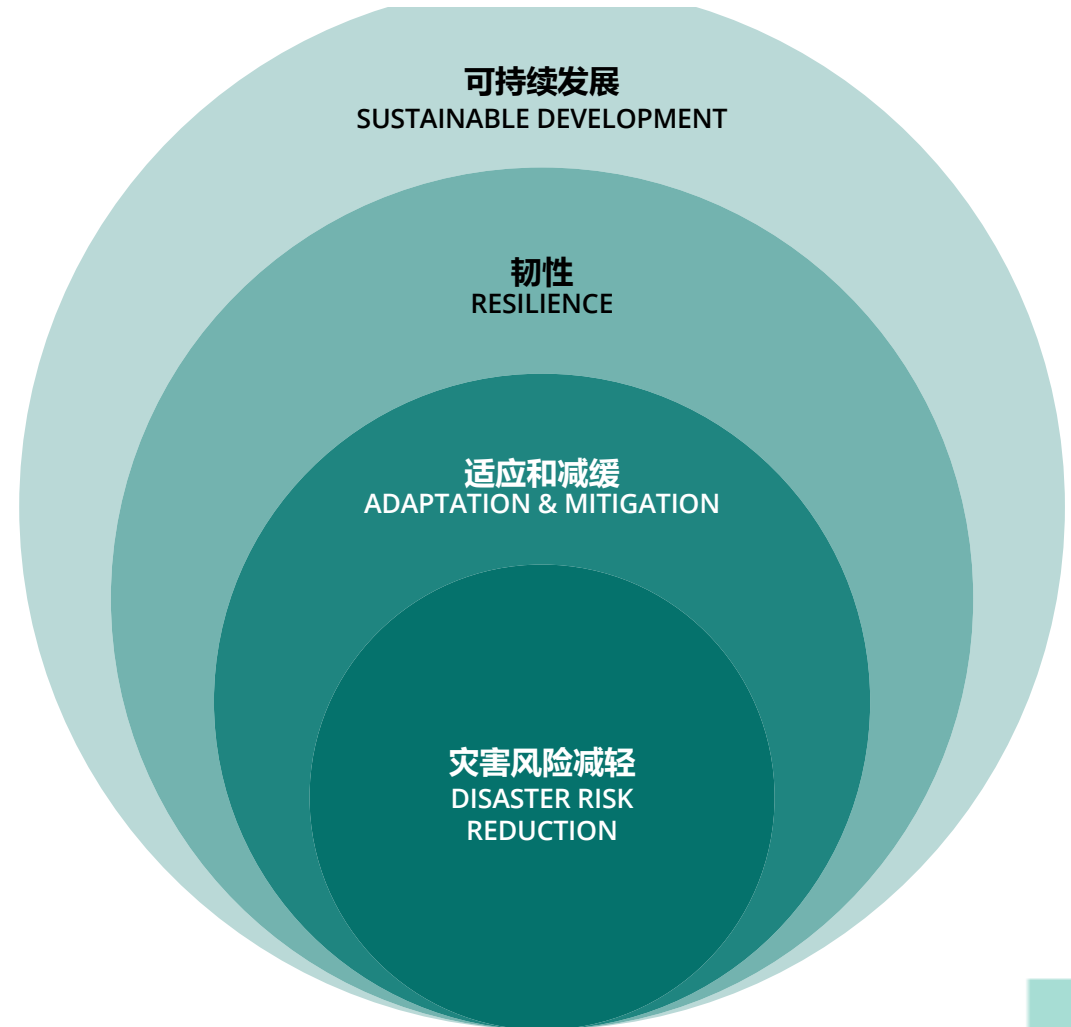
is more than just successful climate change adaptation - water, energy, food security, emissions reductions, ecosystem protection, disaster risk reduction must all be integrated into City Development Planning





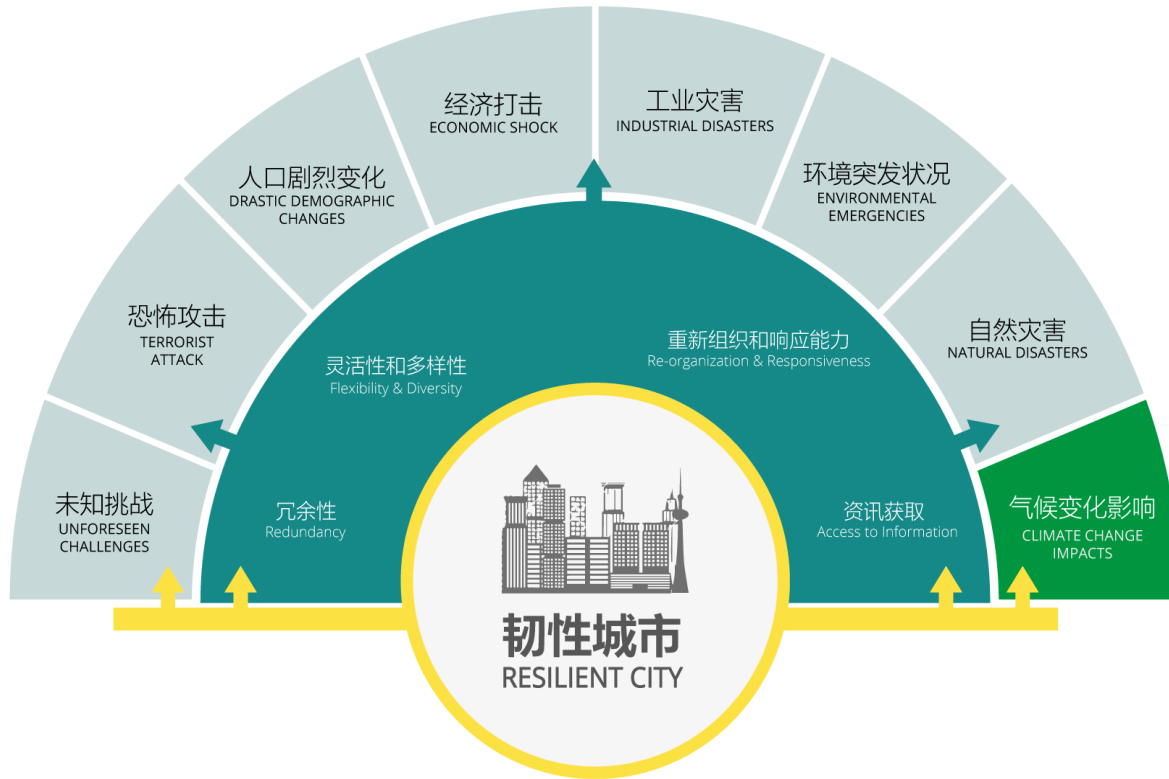
# Resilience & Sustainable Development

Resilience leads to the sustainable development at local level by reduced vulnerability and exposure to natural and man-made disasters and increased capacity to cope with climate challenges and other unforeseen chronic stresses.





# Resilient City



A **RESILIENT CITY** is prepared to absorb and recover from any shock or stress while maintaining its essential functions, structure, and identity as well as adapting and thriving in the face of continual change.

ICLEI introduced the notion of **Resilient Cities** at 2002 UN World Summit on Sustainable Development and forged partnership on urban resilience with UNDRR, UNDP, UNHABITAT, UNEP etc.



# Resilience Principles



**Flexibility**

**Decentralization**

**Redundancy**

**Buffer Capacity**

**Diversity**

**Resource Efficiency**



Stormwater retention basin



# Understanding Urban Resilience

- Cities are currently coping with diverse types of risks and hazards
- Cities have a great learning loop from the experience, which improve their governance capacity consistently
- The outbreak of COVID-19 is a reliable test for urban resilience
- Cross-departmental coordination and cooperation is being generalized, to reach multiple effects
- The need on systematic understanding of urban resilience is profound





# Challenges

- Need for greater awareness and understanding
- Weak political commitment and mandate for resilient actions
- Lack of cross-department and policy coordination mechanism
- Inadequate laws and regulations on urban resilience
- Limited technical and financial capacity
- Lack of data for risk assessment and resilient planning





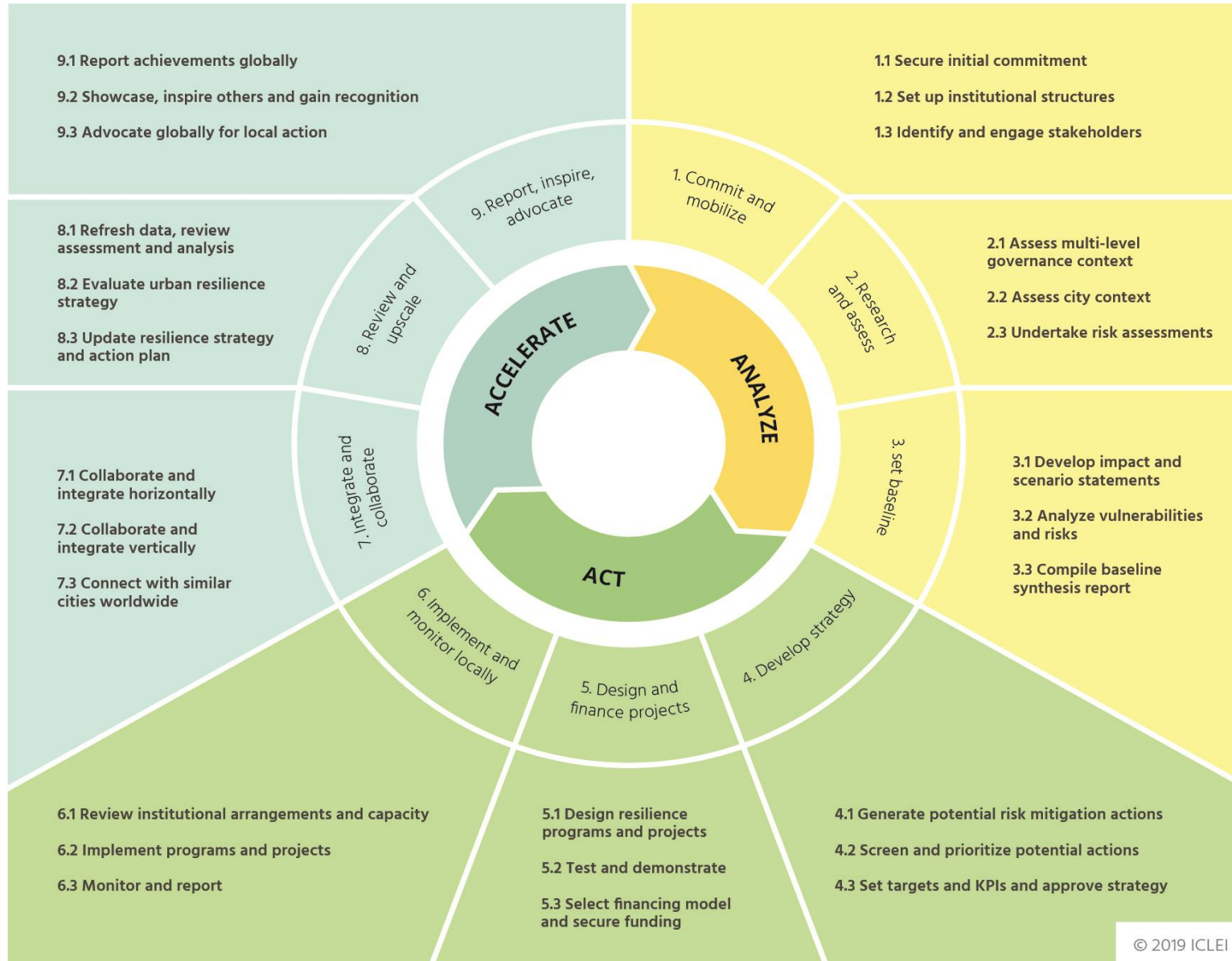
# Recommendations

- Enhance the understanding on urban risks and the importance of urban resilience
- Introduce resilience as goal in urban (sustainable development) strategy
- Mainstream and integrate resilience and climate change adaptation in urban planning
- Carry out systematic vulnerability and risk assessment
- Establish resilience management function in municipal governments





# ICLEI Urban Resilience Planning Circle



- ICLEI's methodology for local governments to urban climate resilience
- Development stages and needs defined in 3 phases and 9 steps
- Provide evaluation, support, and analysis at each phase and stage





Local Governments  
for Sustainability

EAST ASIA

**Thanks for your attention!**



**Shu Zhu**

ICLEI East Asia Secretariat Regional Director  
[shu.zhu@iclei.org](mailto:shu.zhu@iclei.org)  
[eastasia.iclei.org](http://eastasia.iclei.org)

